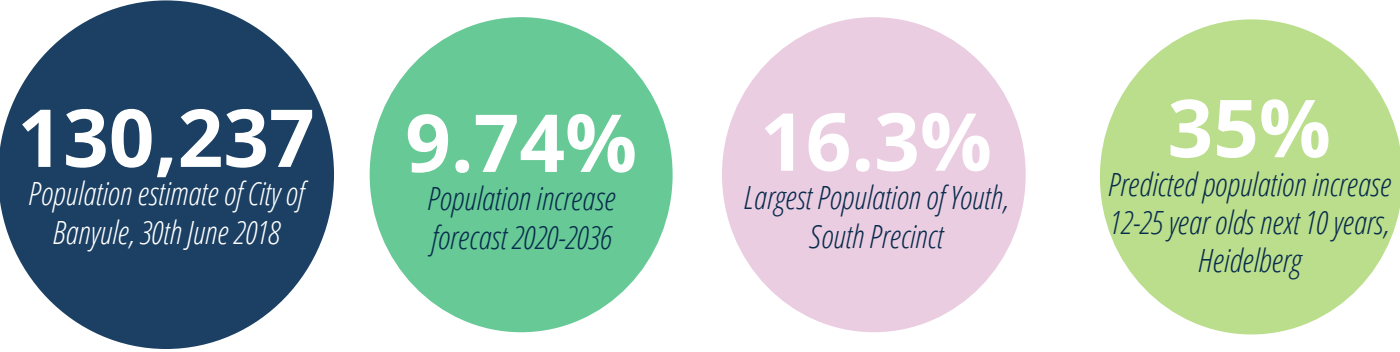


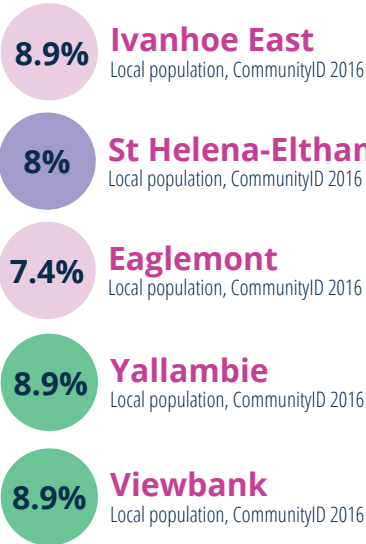
Demographic Review

Existing Demographics

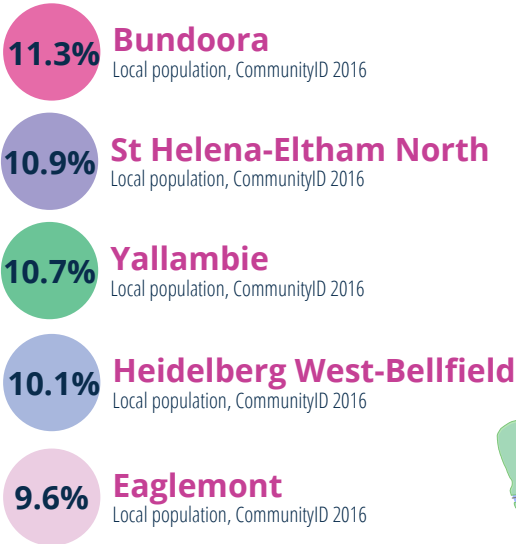
Community ID, 2016



Top 5 Suburb Population 12 to 17 years



Top 5 Suburb Population 18 to 24 years

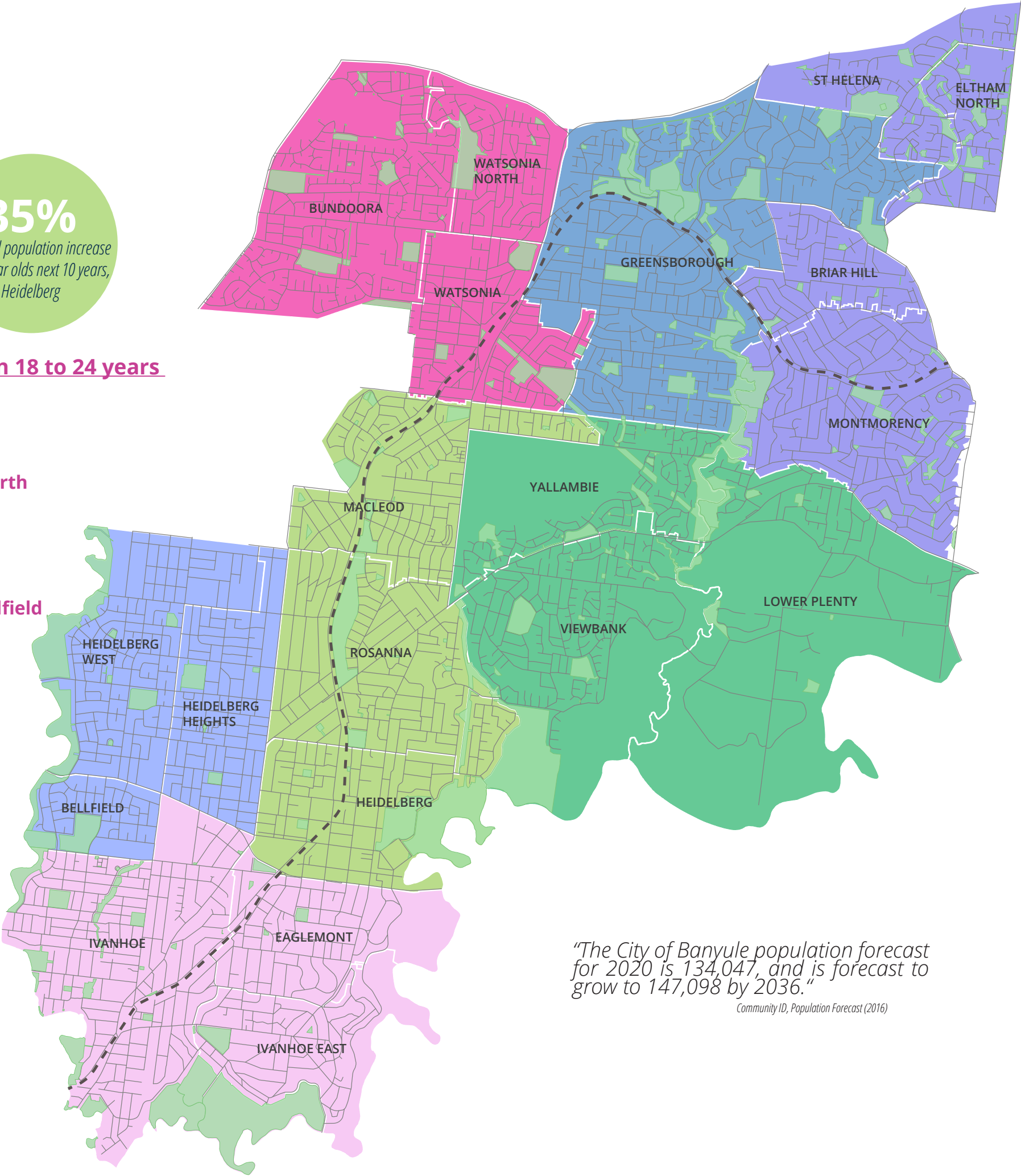


Summary

With a total population estimated at approximately **130,237** (Community ID, Population estimate 2018), **14.9%** of City of Banyule is made up of people between 12 and 24 years old (2016, Community ID)). Of these, **7,917** are between the age of 12 to 17 years old and **10,222** are between the ages of 18 to 24.¹

As a municipality made up of seven precincts, various suburbs have a higher concentration of youth than others. The South Precinct has the largest percentage of youth, with 16.3% of the total population falling within the age range structure of 12-24 years. As a suburb demographic, the highest population of youth (those aged between 12-24 years) reside in St Helena- Eltham North, with 18.9% of the total population falling within this age range.

¹ Age structures classified by Profile ID, 2016



"The City of Banyule population forecast for 2020 is 134,047, and is forecast to grow to 147,098 by 2036."

Community ID, Population Forecast (2016)

East Precinct

Lower Plenty

Viewbank

Yallambie

Precinct Demographic Overview

8.4%
Young adult (18-24 years)
Local population, CommunityID 2016

7.1%
Adolescent (12-17 years)
Local Population, CommunityID 2016



14,830

Total Population:
Community ID (2016)

Suburb Demographic Overview

10.7%
Young Adult (18-24)
Local population

7.4%
Adolescent (12-17)
Local Population

3,916
Total Population
Community ID (2016)

8.4%
Young Adult (18-24)
Local population

6.3%
Adolescent (12-17)
Local Population

3,862
Total Population
Community ID (2016)

7.2%
Young Adult (18-24)
Local population

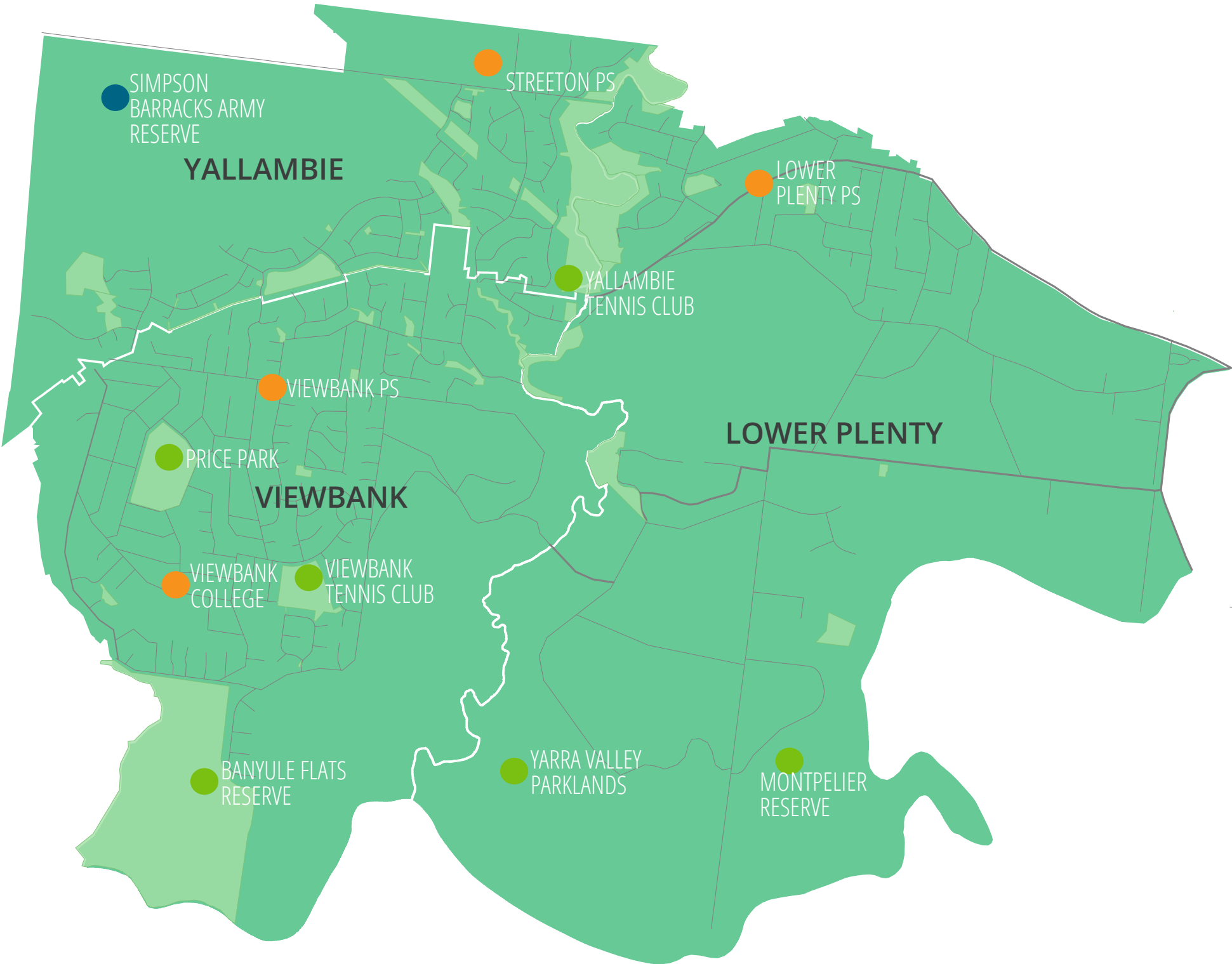
7.3%
Adolescent (12-17)
Local Population

7,052
Total Population
Community ID (2016)

Summary

With almost half of the precincts total population residing in Viewbank, it is interesting to note that 18% of the population of Yallambie is aged between 12 and 24 years. Yallambie is in the top 5 areas with the highest proportion of those aged between 12 to 17 years (adolescent), as well as those aged 18-24 years (young adult) within the City of Banyule.¹ Majority of schools and recreation facilities of the precinct are located in Viewbank, making Yallambie and Viewbank important suburbs to consider in the design and implementation of public spaces.

¹ Community ID, Social Atlas (2016)



● SKATE PARK ● SCHOOL ● RECREATION SPACE ● SPACE OF NOTE 🚂 TRANSPORT HUB

Mid Precinct

Heidelberg
Rosanna
Macleod

Precinct Demographic Overview

7.4%
Young adult (18-24 years)
Local population, CommunityID 2016

5.5%
Adolescent (12-17 years)
Local Population, CommunityID 2016



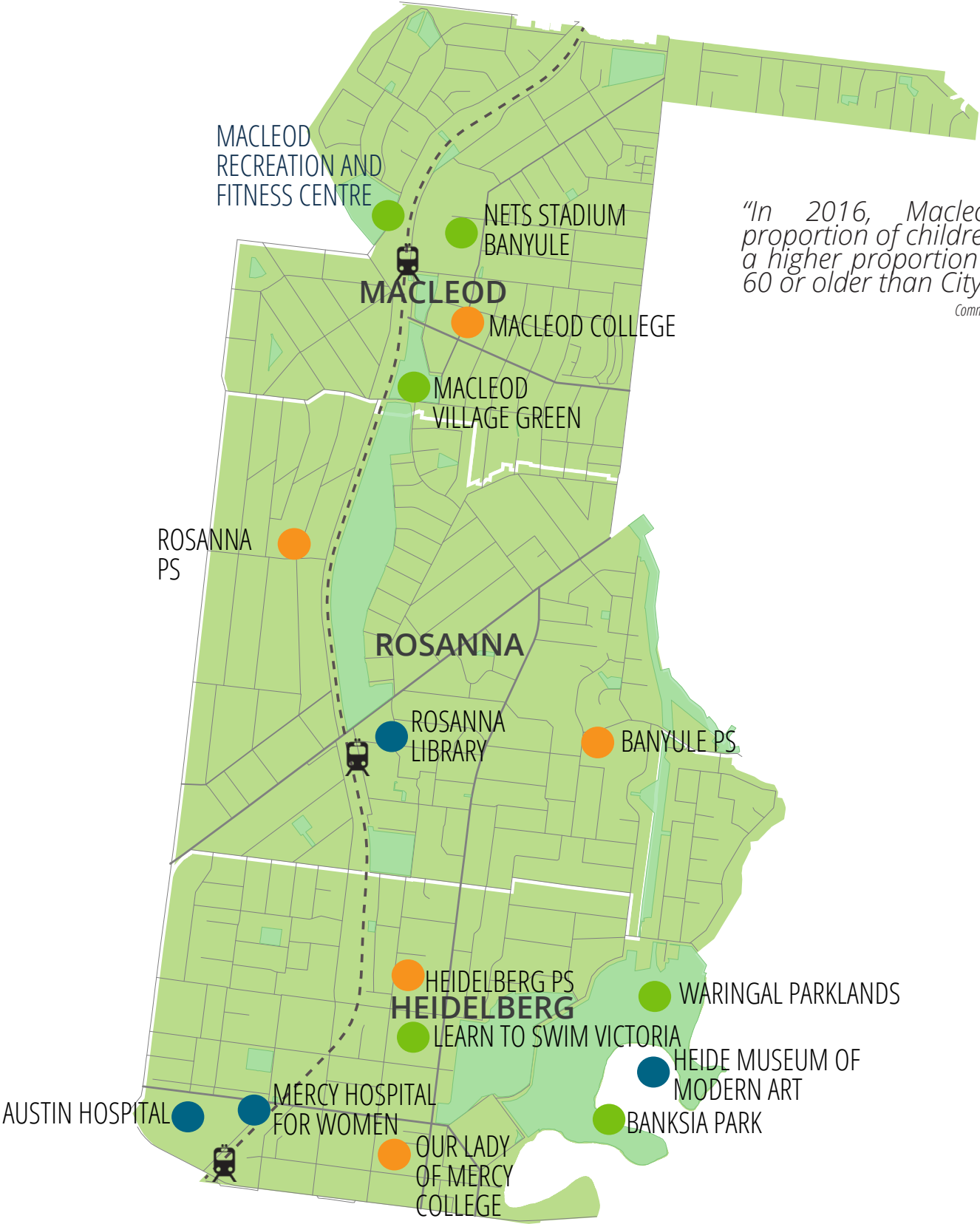
Suburb Demographic Overview

HEIDELBERG	7.9% Young Adult (18-24) Local population	7.5% Young Adult (18-24) Local population	6.9% Young Adult (18-24) Local population
	5.3% Adolescent (12-17) Local Population	6.1% Adolescent (12-17) Local Population	4.9% Adolescent (12-17) Local Population
	6,254 Total Population Community ID (2016)	8,462 Total Population Community ID (2016)	7,154 Total Population Community ID (2016)

Summary

Boasting the largest total resident population across the municipality, the mid precinct also has the smallest population demographic of those aged between 12-24 years across the municipality, at 12.9%.¹ Macleod has the lowest population of 12- 24 year olds at 11.8%, however boasts a high percentage of primary school aged children (5 to 11 years), making it a suburb projected to have a large amount of growth in age structure for those between 12 and 24 years over the next ten years.

¹ Community ID, Profile ID.



"In 2016, Macleod had lower proportion of children (under 18) and a higher proportion of persons aged 60 or older than City of Banyule."
Community ID, Community Profile (2016)

● SKATE PARK ● SCHOOL ● RECREATION SPACE ● SPACE OF NOTE 🚂 TRANSPORT HUB

North East Precinct

Briar Hill
Montmorency
St Helena
Eltham North

Precinct Demographic Overview

8.1%
Young adult (18-24 years)
Local population, CommunityID 2016

6.8%
Adolescent (12-17 years)
Local Population, CommunityID 2016



17,363

Total Population:
Community ID (2016)

Suburb Demographic Overview

6.4%
Young Adult (18-24)
Local population

6%
Adolescent (12-17)
Local Population

3,143
Total Population
Community ID (2016)

7%
Young Adult (18-24)
Local population

6.5%
Adolescent (12-17)
Local Population

9,076
Total Population
Community ID (2016)

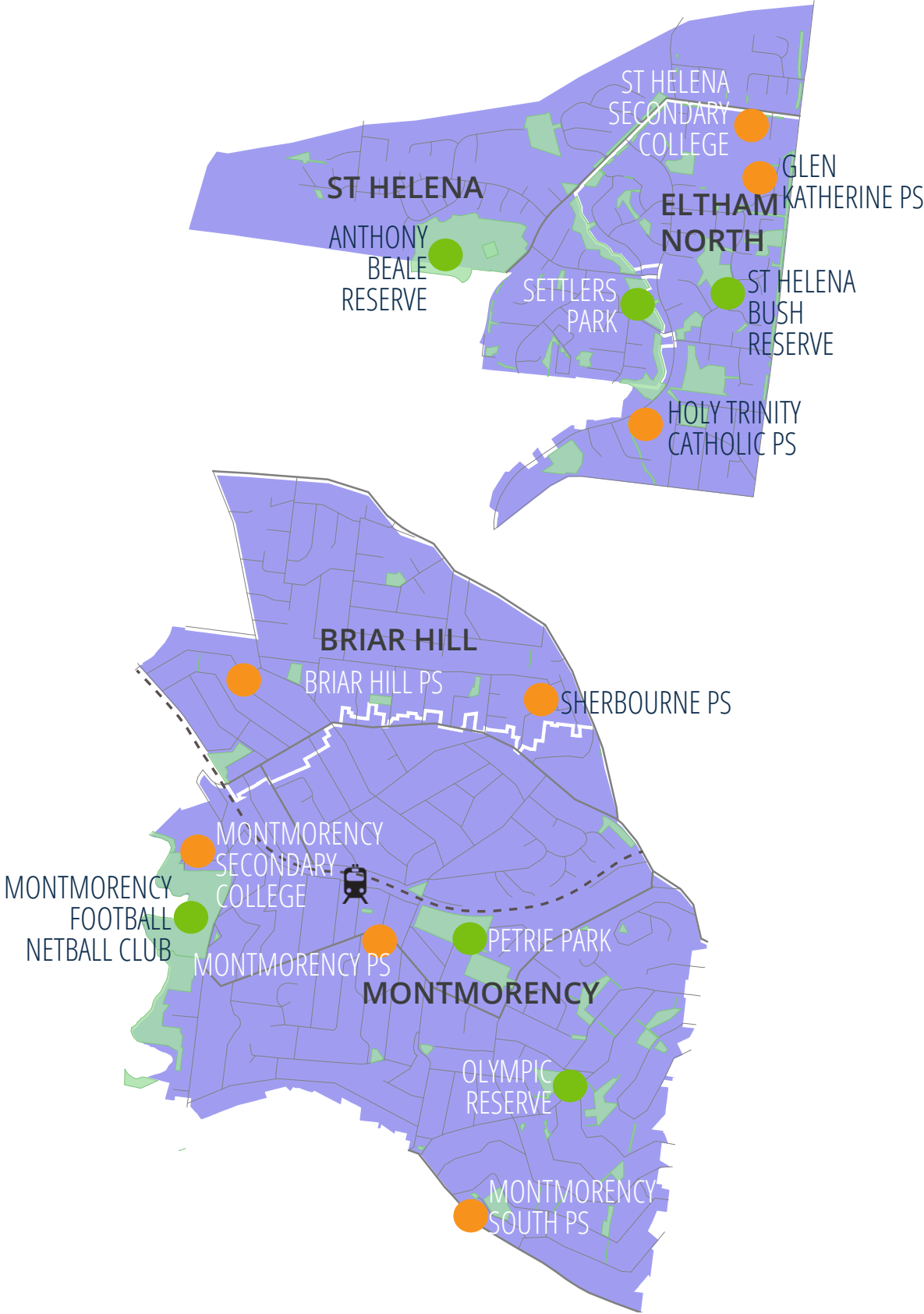
10.9%
Young Adult (18-24)
Local population

8%
Adolescent (12-17)
Local Population

5,144
Total Population
Community ID (2016)

Summary

While more than half of the precinct's total population live in Montmorency, the suburbs of St Helena and Eltham North¹ are home to the largest population of young people (12-24 years) within the precinct with almost 19% of the total population falling within this age bracket. Briar Hill had the lowest percentage of 18-24 years across the entire municipality.



● SKATE PARK ● SCHOOL ● RECREATION SPACE ● SPACE OF NOTE 🚂 TRANSPORT HUB

¹ Community ID Social Atlas 2016 combined suburb data study

North West Precinct

Watsonia
Watsonia North
Bundoora

"In 2016, Bundoora had the highest proportion of people in the 18 to 24 years age group in the City of Banyule."
Community ID, Social Atlas (2016)

Precinct Demographic Overview

8.1%
Young adult (18-24 years)
Local population, CommunityID 2016

6.8%
Adolescent (12-17 years)
Local Population, CommunityID 2016



Suburb Demographic Overview

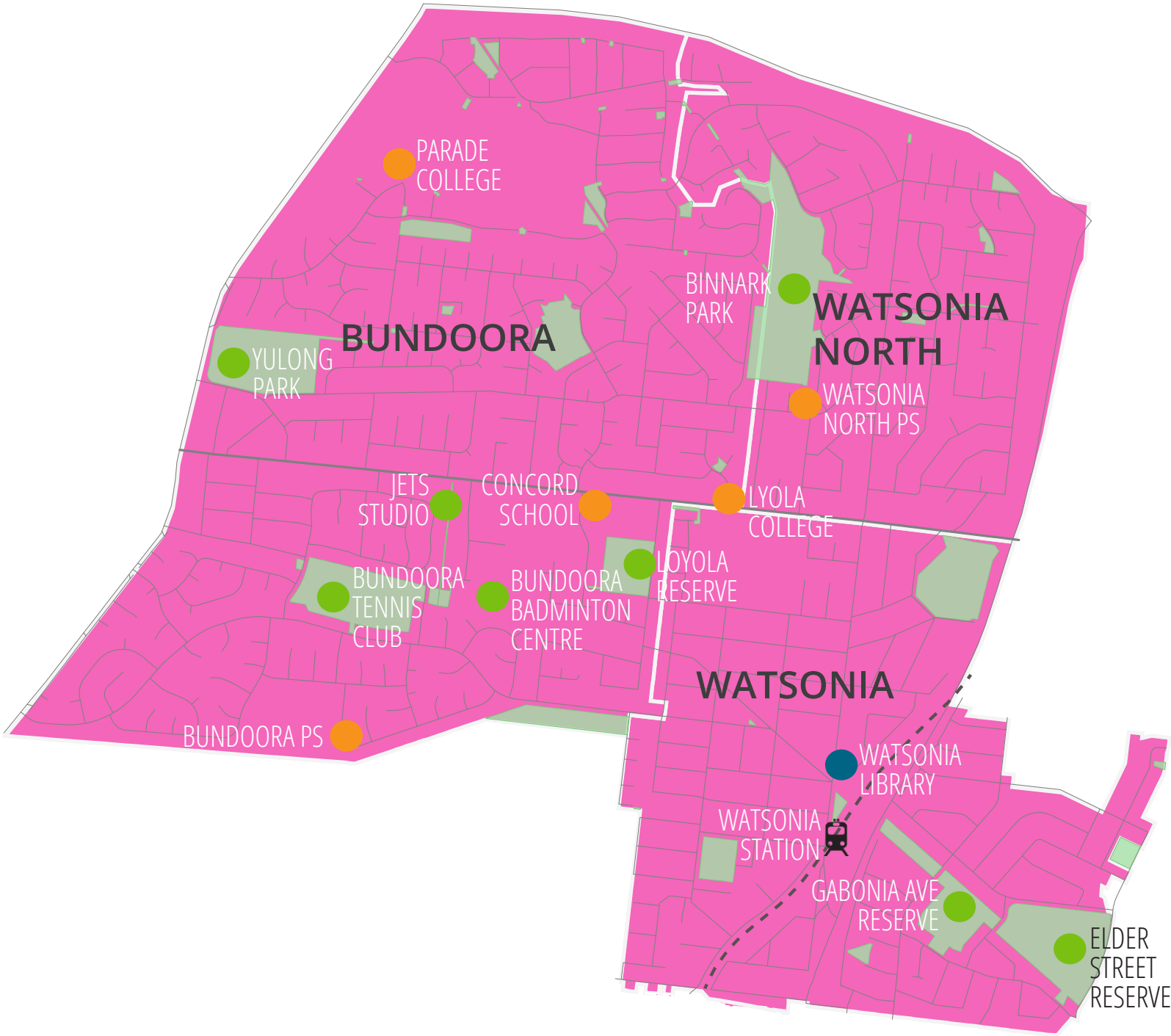
WATSONIA	7.3% Young Adult (18-24) Local population	7.7% Young Adult (18-24) Local population	11.3% Young Adult (18-24) Local population
	6.1% Adolescent (12-17) Local Population	6.9% Adolescent (12-17) Local Population	6.3% Adolescent (12-17) Local Population
	5,197 Total Population <small>Community ID (2016)</small>	3,791 Total Population <small>Community ID (2016)</small>	10,008 Total Population <small>Community ID (2016)</small>

Summary

Bundoora's population of those classified as 'youth' within this framework is 17.6% of the total population falling within these age ranges. Bundoora is also home to the largest proportion of those aged between 18- 24 years across the municipality. This high proportion of young people is predicted to have low population growth over the next decade, with a predicted 0.5% increase in 12- 25 year olds. Whereas the number of 12-15 year olds in Watsonia is predicted to grow by 10.4% over the next decade.²

1 Community ID, Age Structure service age groups, (12-17 years, 18-24 years)

2 Forecast ID, Forecast Mapping, 2020-2030 (12-15 years)



● SKATE PARK ● SCHOOL ● RECREATION SPACE ● SPACE OF NOTE 🚂 TRANSPORT HUB

North Precinct

Greensborough

"In 2016, North Precinct had higher proportion of children (under 18)... than the City of Banyule."
Community ID, Community Profile (2016)

Precinct/ Suburb Demographic Overview

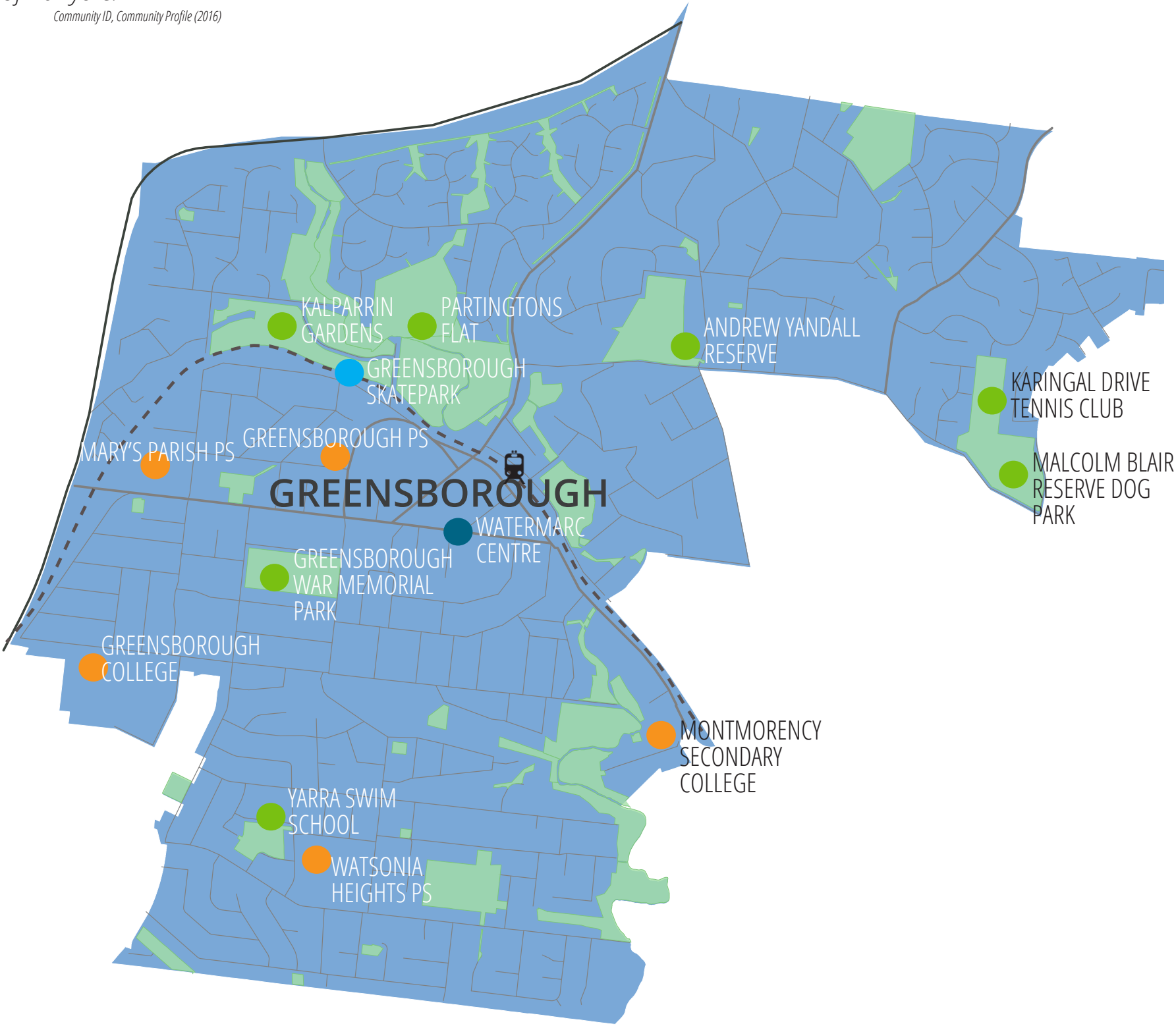
7.1%
Young adult (18-24 years)
Local population, CommunityID 2016

6.5%
Adolescent (12-17 years)
Local Population, CommunityID 2016



Summary

Comprising of just one suburb, the North Precinct (Greensborough) is predicted to have a 12.5% increase in the age range of 12 to 24 years over the period of 2020-2030. Greensborough was among the lowest percentage of suburbs populating 18-24 year olds within the municipality.



● SKATE PARK ● SCHOOL ● RECREATION SPACE ● SPACE OF NOTE 🚂 TRANSPORT HUB

South Precinct

Eaglemont

Ivanhoe

Ivanhoe East

Precinct Demographic Overview

8.9%
Young adult (18-24 years)
Local population, CommunityID 2016

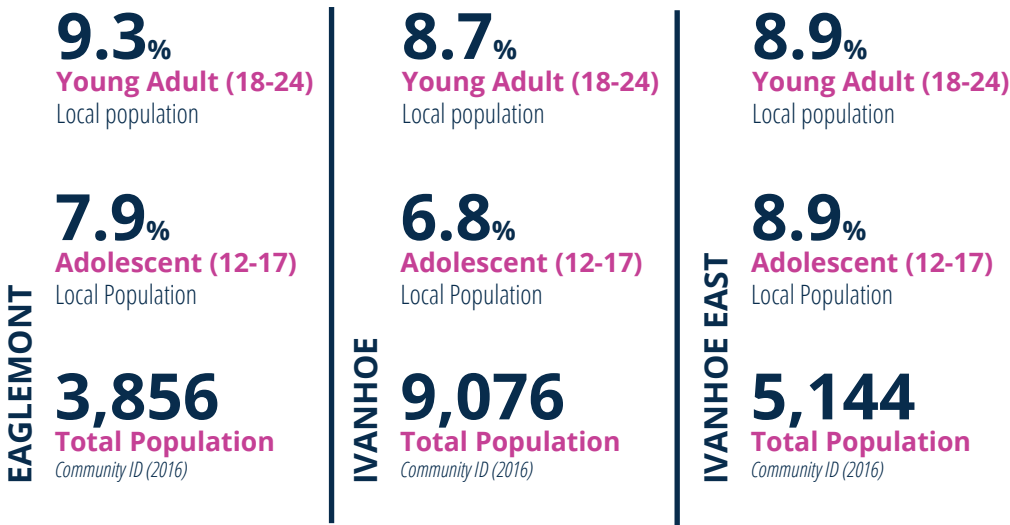
7.4%
Adolescent (12-17 years)
Local Population, CommunityID 2016



“In 2016, Ivanhoe East had the highest proportion of secondary school aged children (people aged 12-17 years) in the City of Banyule.”

Community ID, Social Atlas (2016)

Suburb Demographic Overview

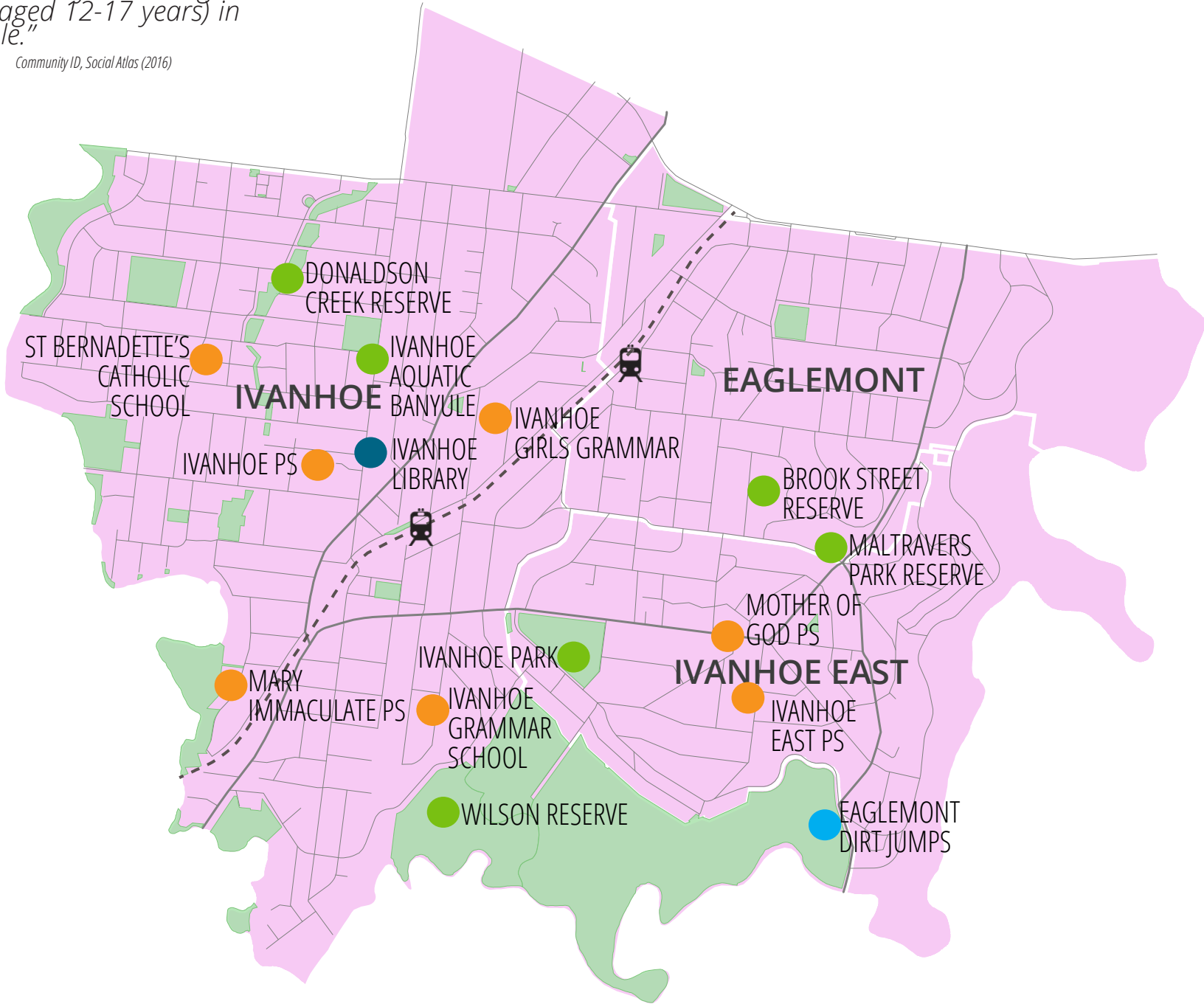


Summary

The South Precinct had the highest percentage of 12-24 year olds through the age structure models depicted, with 16.3% of the Precinct's total population being within this age range. ¹ Ivanhoe East had the greatest percentage of those aged 12- 17 years across the whole municipality and falls within the top 5 suburbs across the municipality with the greatest population of those aged between 12- 24 years. Eaglemont had the lowest level of Disadvantage in the City of Banyule with a SEIFA score of 1,125.1.²

¹ Community ID, Social Atlas 2016

² SEIFA is a group of 4 indexes, which are used to rank areas broadly by their level of advantage or disadvantage. Community ID/ Blog



● SKATE PARK ● SCHOOL ● RECREATION SPACE ● SPACE OF NOTE 🚂 TRANSPORT HUB

West Precinct

Heidelberg West

Heidelberg Heights

Bellfield

Precinct Demographic Overview

9.6%
Young adult (18-24 years)
Local population, CommunityID 2016

5.9%
Adolescent (12-17 years)
Local Population, CommunityID 2016



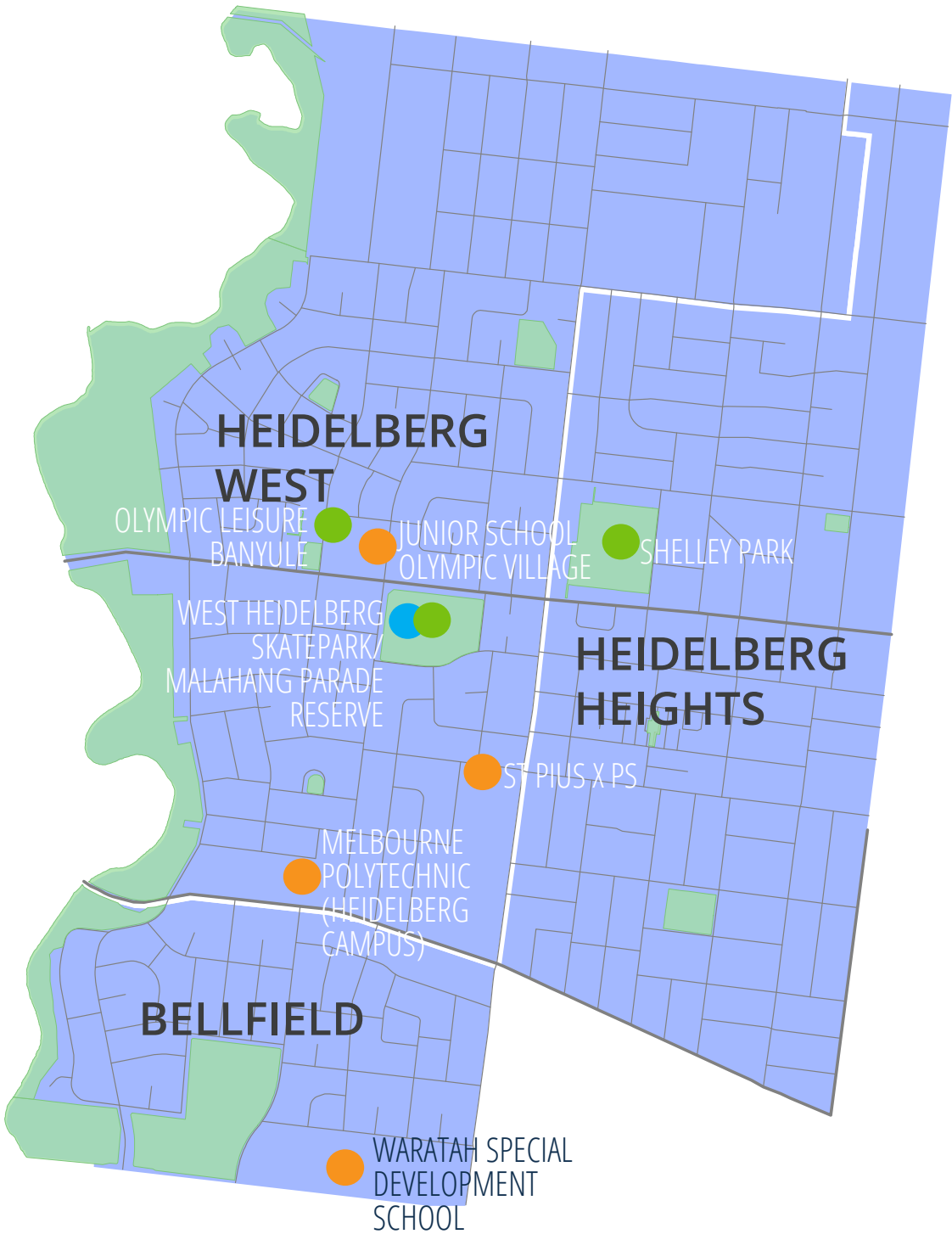
Suburb Demographic Overview

HEIDELBERG WEST-BELLFIELD
10.1%
Young Adult (18-24)
Local population
6.2%
Adolescent (12-17)
Local Population
7,339
Total Population
Community ID (2016)

HEIDELBERG HEIGHTS
8.9%
Young Adult (18-24)
Local population
5.6%
Adolescent (12-17)
Local Population
6,115
Total Population
Community ID (2016)

Summary

Heidelberg West- Bellfield was among the top 5 suburbs with the highest percentage of those aged between 18-24 years. The suburb(s) also had the highest level of disadvantage, with a SEIFA 2016 index score of 864.7. These statistics combined suggest the need for careful planning for open spaces and youth facilities within the area.



● SKATE PARK ● SCHOOL ● RECREATION SPACE ● SPACE OF NOTE 🚉 TRANSPORT HUB

Population and Age Structure

Forecast Map

Predicted population changes 2020- 2030

Top 5 areas predicted to have the MOST growth

HEIDELBERG
+35%

increase in 12- 25 year olds between 2020- 2030
Population ForecastID 2016

MACLEOD, HEIDELBERG HEIGHTS
17.5%

increase in 12- 25 year olds between 2020- 2030
Population ForecastID 2016

GREENSBOROUGH
12.4%

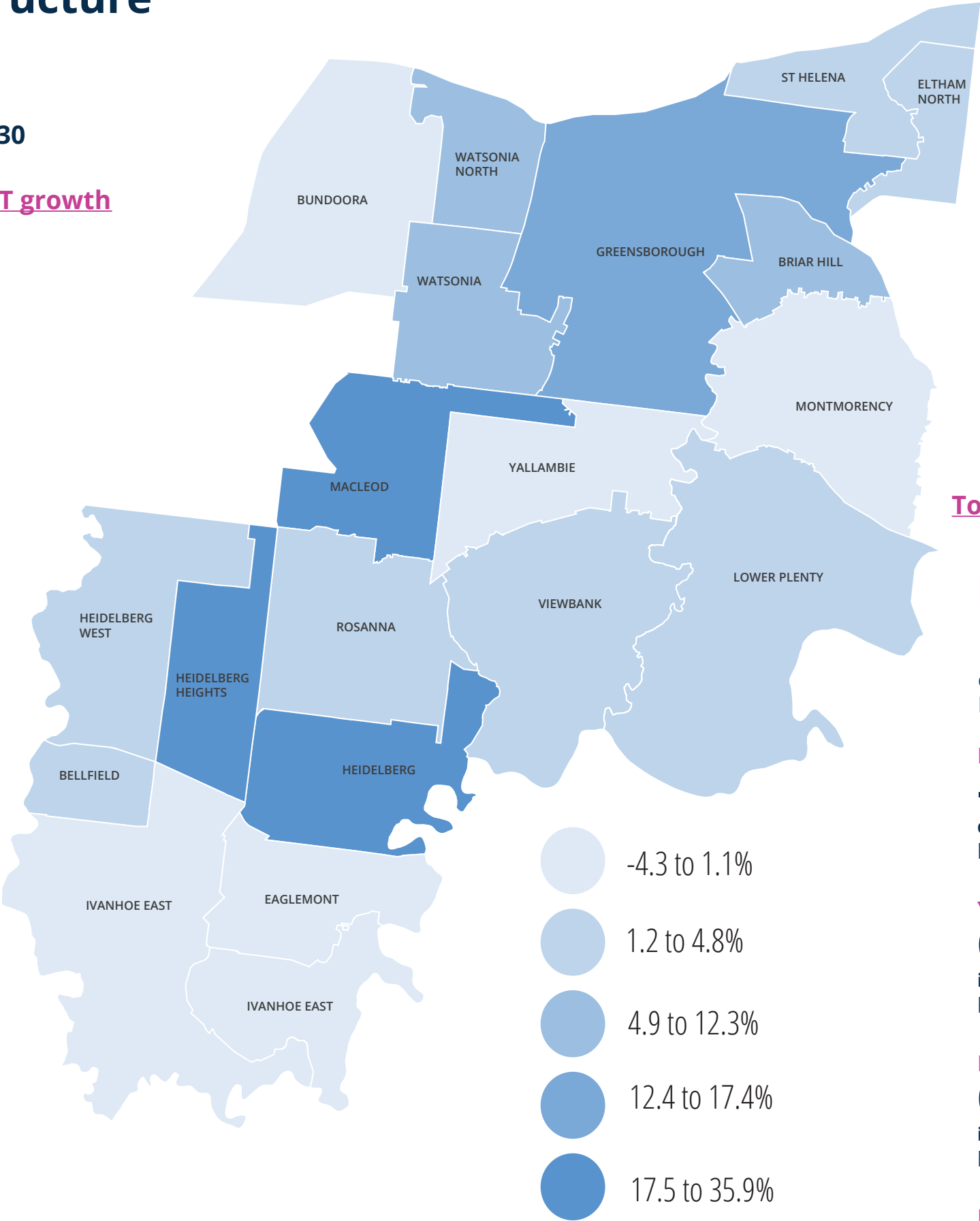
increase in 12- 25 year olds between 2020- 2030
Population ForecastID 2016

BRIAR HILL
11.5%

increase in 12- 25 year olds between 2020- 2030
Population ForecastID 2016

WATSONIA
10.4%

increase in 12- 25 year olds between 2020- 2030
Population ForecastID 2016



"The area with the greatest increase in persons aged 12 to 25 years between 2020 and 2030 in the City of Banyule is Heidelberg."
Community ID, Population Forecast (2016)

Top 5 areas predicted to have the LEAST growth

EAGLEMONT
-4.3%

drop in 12- 25 year olds between 2020- 2030
Population ForecastID 2016

IVANHOE EAST
-0.2%

drop in 12- 25 year olds between 2020- 2030
Population ForecastID 2016

YALLAMBIE
0.2%

increase in 12- 25 year olds between 2020- 2030
Population ForecastID 2016

IVANHOE, MONTMORENCY
0.4%

increase in 12- 25 year olds between 2020- 2030
Population ForecastID 2016

BUNDOORA
0.5%

increase in 12- 25 year olds between 2020- 2030
Population ForecastID 2016