



Banyule  
City Council

Banyule

# Community Vision

2041



# Our Vision

## Acknowledgments

Banyule Council proudly acknowledges the Wurundjeri Woi-wurrung people as the Traditional Custodians of the land which Council operates on. We pay our respect to all Aboriginal and Torres Strait Islander Elders, past, present and emerging, who have resided in the area and have been an integral part of the region's history.

**The City of Banyule would like to acknowledge all of the individuals and organisations who have contributed to this Community Vision.**

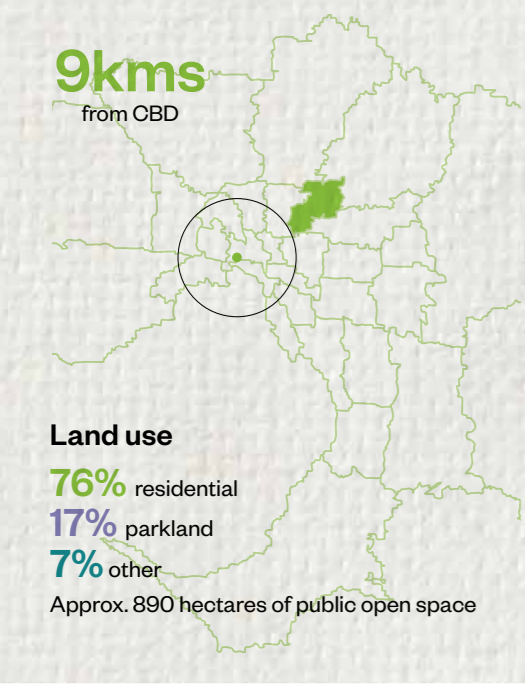
The Vision has been enriched by the thousands of people who participated in the public forums, online and in-person workshops, surveys, submissions etc. We thank you for your time, expertise, ideas, enthusiasm and most of all your passion for Banyule's future.

Finally, we would like to acknowledge the contributions of the many staff from Banyule Council who listened deeply and engaged directly with the community over a long period of time to develop the Banyule Community Vision 2041.

## Contents

Acknowledgements	2
Our Banyule Community	4
Creating this Vision	6
From our Mayor and Councillors	8
Banyule Community Vision 2041	10
Banyule Community Vision Priority Themes	11
How the Banyule Community Vision 2041 informs Council's work	12
Our Inclusive and Connected Community	14
Our Sustainable Environment	16
Our Well-Built City	18
Our Valued Community Assets and Facilities	20
Our Thriving Local Economy	22
Our Trusted and Responsive Leadership	24
How we will make this Vision reality	26
How to contact your Council	28

# Our Banyule Community

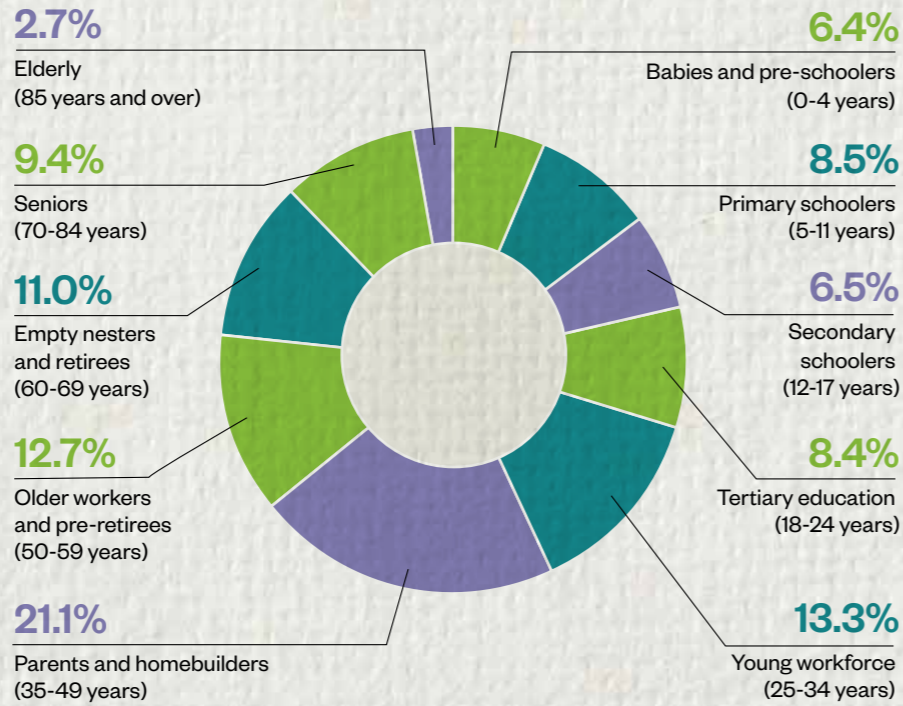


## Population



Banyule is a community of **131,940** residents (2020)  
which will grow to **165,256** by 2041

Banyule's population is made up of the following age groups:



## Households

There are over **46,000** households

Household types:

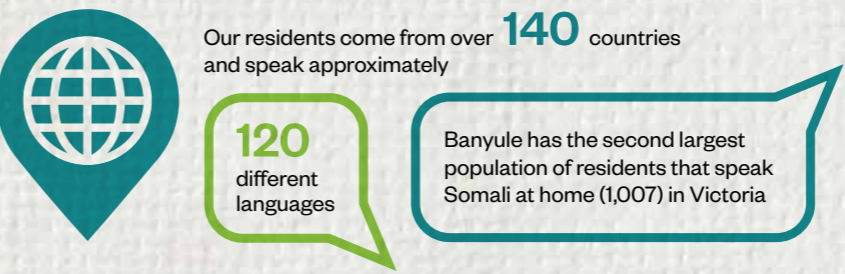


Household size of **2.54** people

**1,264** Banyule residents who were a Specialist Homeless Service client (2018-19)



## Diversity



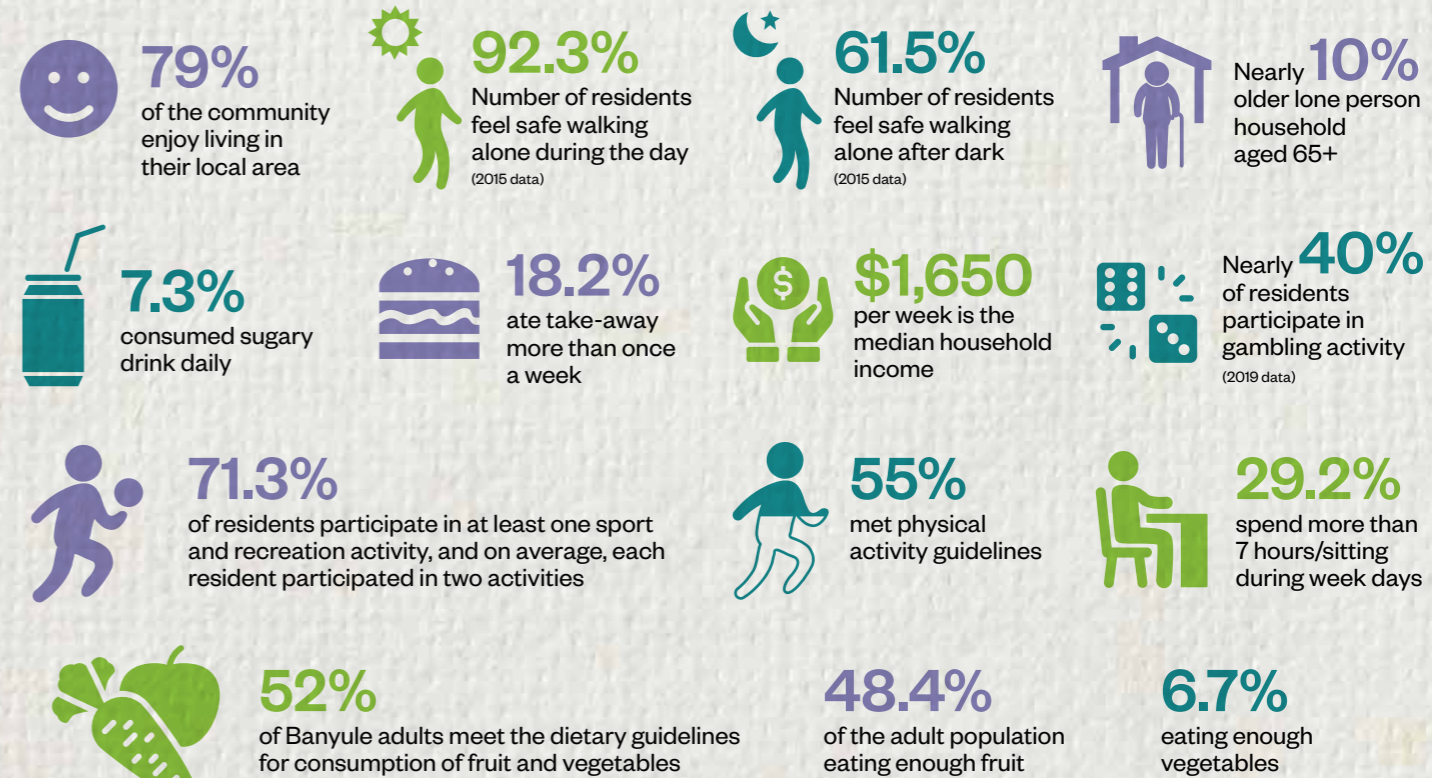
**706** residents identified as Aboriginal and/or Torres Strait Islander

**1.4%** residents aged sixteen and over identified as Lesbian, Gay, Bisexual, Transgender or Intersex.  
This is likely to be an under report of the true proportion of LGBTIQ+ residents living in Banyule (2017).

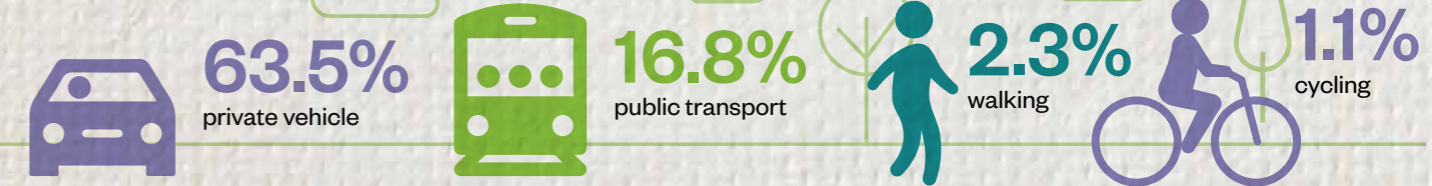
## Economy



## Adult health and well being



## Transport



# Creating this Vision

In November 2020, we started the journey to develop a Banyule Community Vision for 2041. A vision that captures the community's aspirations and priorities for our city over the next 20 years.

To develop the Vision, we introduced the Banyule 2041 – Shaping Our Future project. The project was all about listening and collaborating with the community, understanding local issues and priorities to create a long-term vision for Banyule and inform the Council Plan and Long-Term Financial Plan.

## Stage 1


### Understanding community aspirations and focus for the future

The conversations started in November 2020 as we invited our community to participate in the Banyule 2041 – Shaping Our Future Project. The first stage asked the community to imagine Banyule in 2041 and share what areas Council should focus on.


The contributions outlined what the community value in Banyule, what they aspire for the future, and areas of focus for Council to achieve that future while remaining financially sustainable.

Throughout the engagement period, Council worked to inform as many people as possible about the project, encouraged participation and provided background information about Banyule to help give well informed feedback.


### How we engaged




Social media posts reaching over 25000 people




Direct emails (approximately 20000)




The Banyule Banner delivered to over 55000 households and businesses




Workshop flyers and letters




Council website




Shaping Banyule Project page



Posters and real estate boards throughout the municipality



Postcards



Phone survey

### How you participated



Online survey - Shaping Banyule



Online workshops



Face to face community workshops and focus groups



Written submissions




Telephone survey




Hard copy survey


### The results




Over 4100 people were engaged




829 contributions online




4 written submissions




1329 people actively participated in engagement activities




Higher female participation of 59%, 38% male and 3% preferred not to say




Engaged with higher proportion of people who identify as LGBTIQ+



10 workshops with 420 participants



High proportion of 26-64 ages participated



77% participants live in Banyule, 17% work in Banyule, 3% study

## Stage 2

### Banyule Community Working Group

For the second stage of engagement, Council called upon everyday community members to join the Banyule 2041 Community Working Group (CWG). The CWG was made up of 55 people from a representative sample of the Banyule community, in a sense a 'mini-Banyule'.

At its core, community deliberation was about empowering communities to reach a collective agreement on the preferred future state.

After many interesting and in-depth discussions the CWG developed a co-authored Community Vision statement, identified themes to focus on for the next 20 years and made recommendations to help deliver the Council Plan and Long-Term Financial Plan.



# From our Mayor and Councillors



Cr. Rick Garotti - Mayor



Cr. Tom Melican - Deputy Mayor



Cr. Alison Champion



Cr. Elizabeth Nealy



Cr. Alida McKern



Cr. Mark Di Pasquale



Cr. Peter Dimarelos



Cr. Fiona Mitsinikos



Cr. Peter Castaldo

What a remarkable journey we have been on as our community embraced the idea of developing a Community Vision for Banyule 2041.

They brought energy, enthusiasm and expertise to create an inspired vision for the future of our city.

They embodied the amazing spirit of our community, and it was heartening to see how caring they were for one another and the place we call Banyule.

What they produced is a vision that is aspirational, ambitious and achievable.

A vision that strives to build a better future for all. A future that starts with action today and ensures in 20 years' time our next generation will be in a better place.

We are truly grateful to more than 1300 people who contributed along the way and put us on our path towards Banyule 2041. We look forward to continuing this journey with you all to make this vision a reality.

We look forward to 2041.

# Banyule Community Vision 2041

The Banyule Community Vision 2041 describes the community’s aspirations for the future of Banyule over the next 20 years and expresses what is important to the community. Our Vision is unique to Banyule.

“WE IN BANYULE ARE A  
THRIVING, SUSTAINABLE, INCLUSIVE  
AND CONNECTED COMMUNITY.  
WE ARE ENGAGED, WE BELONG,  
AND WE VALUE AND PROTECT  
OUR ENVIRONMENT.”

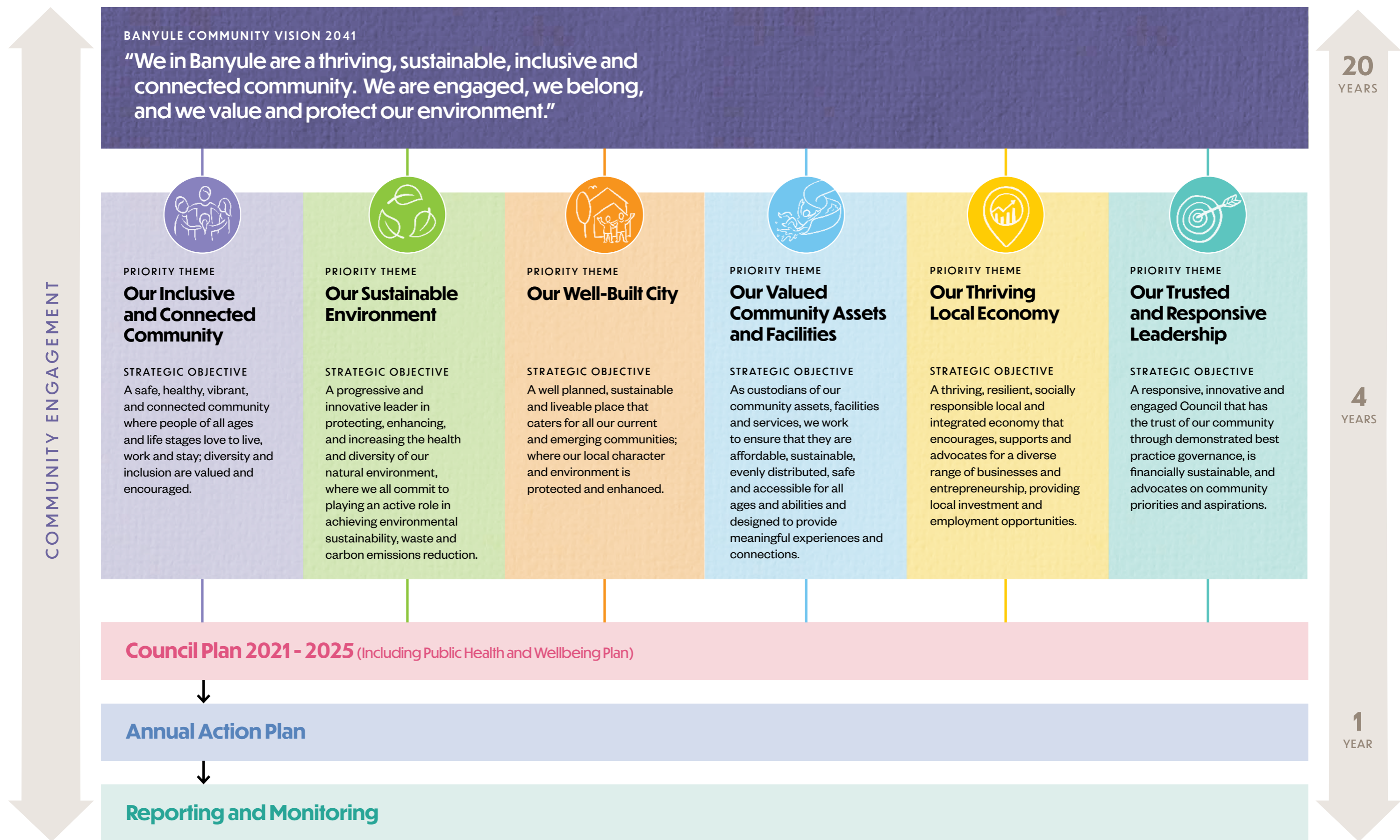


# Banyule Community Vision Priority Themes

As well as creating the overall Vision, the Community Working Group together with Council, set-out six priority themes that outline the aspirations and focus of our community over the next 20 years.



# How the Banyule Community Vision 2041 informs Council's work





"The youth and even the younger children need more social events, opportunities, and mental health assistance"

SOMALI WORKSHOP PARTICIPANT



# Our inclusive and connected community



"DIGITAL INCLUSION IS VERY IMPORTANT SO THAT WE DON'T LEAVE BEHIND PEOPLE WHO ARE NOT TECH SAVVY"

SERVICE PROVIDER WORKSHOP PARTICIPANT

**A safe, healthy, vibrant and connected community where people of all ages and life stages love to live, work and stay; diversity and inclusion are valued and encouraged.**

In 2041, Banyule maintains its uniqueness as a diverse, inclusive and vibrant community, and people from all backgrounds, genders, ages and abilities call Banyule home.

We encourage community connection and look after our vulnerable community members, women, children and young people by making Banyule a safer place for everyone.

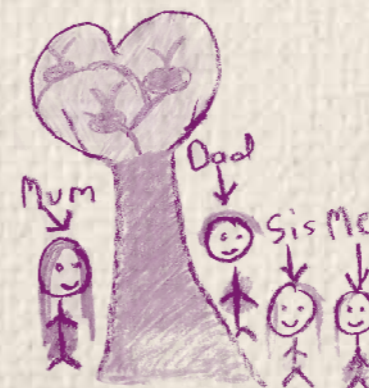
We maintain our love and passion for the outdoors, open space and greenery. Our community spaces are welcoming and are accessible for all abilities.

We are fit and healthy and have access to safe and nutritious food. Participation in sport and other recreational interests is prominent and people lead active lifestyles and have good mental and emotional wellbeing.

We know our neighbours and greet our new friends with open arms. Acceptance of our differences underpins our sense of community and belonging. We embrace our multiculturalism and engage with and understand the needs of diverse communities.

Together we celebrate the amazing cultures that make up who we are and contribute to our shared identity. Inclusiveness and diversity are reflected in all our services, programs, festivals and events.

Our rich arts and cultural history are protected, promoted and cultivated and more opportunities are available for people to come together and enjoy.



"LOVE  
HAPPINESS  
KIND PEOPLE  
HEALTHY LIFESTYLE  
LOOKING AFTER OUR COMMUNITY  
(CARING FOR OUR PEOPLE)"  
PENELOPE - 7 YEAR OLD



"All new houses and council buildings are energy efficient"  
COMMUNITY MEMBER



# Our sustainable environment

"PLANT TREES AND PLANT SEEDS TO REDUCE POLLUTION OF THE AIR. WE NEED A CLEAN ENVIRONMENT WITH NO CAR POLLUTION AND WATER CONTAMINATION"  
DANIEL 7 YEARS OLD



**A progressive and innovative leader in protecting, enhancing and increasing the health and diversity of our natural environment, where we all commit to playing an active role in achieving environmental sustainability, waste and carbon emissions reduction.**

In 2041, Banyule is a leader in environmental sustainability and recognised as one of the most sustainable communities. We form partnerships and continue to invest in innovative solutions to tackle climate change.

We are an empowered community that takes actions and is resilient to shocks and stresses of climate change.

We are a carbon neutral community, and on the way to carbon negative. We are a self-sustaining recycling hub and have achieved zero waste.

We are a well educated and informed community on waste, food security, water conservation and climate actions. We all play an active role and promote the protection of local biodiversity, indigenous plants, flora and fauna and wildlife habitat.

We act sustainably and reduce waste, encourage recycling, make good use of our food and garden organics, and urban farming exists throughout Banyule. Our trees and tree canopy are well maintained and enhance liveability and beautify our streets.

We have abundant natural open spaces that improve health and wellbeing. Environmentally sustainable design is central in planning and development, and renewable energy is used to power our homes, businesses and facilities as a new normal.

"EDUCATE PEOPLE SO THAT INSTEAD OF HAVING 1% OF PEOPLE DOING 100% OF THE WORK, HAVE 100% OF PEOPLE EACH DOING 1% OF THE WORK"

ADVISORY COMMITTEE SUMMIT PARTICIPANT





"MORE ACCESS TO  
NATURAL AREAS  
WHERE WE CAN  
CONNECT WITH THE  
ENVIRONMENT AND  
THAT SUPPORT ACTIVE  
TRANSPORT – LIKE OFF  
ROAD CYCLE WAYS IN  
OUR PARKS"

HEIDELBERG HEIGHTS  
RESIDENT



# Our well-built city



"Ensuring the cultural and historical  
heritage of Banyule is protected.  
Maintaining and protecting the Historical  
Overlay precincts that we have now"

BANYULE COMMUNITY WORKING GROUP MEMBER

**A well-planned, sustainable and  
liveable place that caters for  
all our current and emerging  
communities; where our local  
character and environment is  
protected and enhanced.**

In 2041, Banyule is a well-planned and designed city that meets current and future needs of the community. We are a green city with ample open natural space, trees and wildlife at our doorsteps.

We are a city with diverse, affordable, and sustainable housing solutions that meet the mixed needs of our diverse community.

Our City is a network of 20-minute neighbourhoods, connected through a range of transport options and we have easy access to places to live, work and play. We discourage car use and use active and sustainable forms of transport such as walking, cycling and public transport.

We protect our local character and heritage, ensuring development is sustainable and in balance with our preserved grasslands, forests, wetlands, waterways and wildlife.

"WE NEED HOUSING FOR ALL LIFE STAGES  
INCLUDING FIRST HOME BUYERS. WE ALSO NEED  
GOOD RENTAL STOCK...IT CAN BE DIFFICULT FOR  
PEOPLE WITH A DISABILITY TO SECURE SUITABLE  
RENTAL PROPERTIES"

BANYULE COMMUNITY WORKING GROUP MEMBER





# Our valued community assets and facilities

*"Enhance walkability to enable more people to walk safely to and from schools, shops, trains, buses in daytime and evenings"*

MONTMORENCY RESIDENT



*"I VALUE OUR LIBRARIES, COMMUNITY CENTRES, PLAYGROUNDS, AND ALL OUR FANTASTIC SERVICES THAT SUPPORT AND ENRICH THE LIVES OF PEOPLE LIVING IN BANYULE"*

MACLEOD RESIDENT

**As custodians of our community, assets, facilities and services, we work to ensure that they are affordable, sustainable, evenly distributed, safe and accessible for all ages and abilities and designed to provide meaningful experiences and connections.**

In 2041, our parks, playgrounds and sports grounds are well maintained and accessible to people with all abilities. Our community assets and facilities are accessible, diverse and inclusive. They are safe, environmentally sustainable, innovative and represents local character.

Our assets are fit for purpose, well maintained and service the needs of our community.

Our multipurpose facilities provide places and spaces for people to connect, work and build friendships.

We take pride in and enjoy our well-built community hubs, aquatic facilities, and sports recreation centres that are essential to our health and wellbeing.

We have a safe network of bike lanes, pathways, roads and transport options that connects us locally and to the wider community.



*"Create more open spaces, as so clearly valued by everyone this year, for not only exercise but socialisation and mental health aspects"*

ROSANNA RESIDENT



# Our Thriving local economy



*"Build more local community initiatives for people to shop and live locally"*  
MACLEOD RESIDENT



"PROVIDE VOLUNTEERING OPPORTUNITIES TO BUILD SKILLS AND CONNECTIONS"  
YOUNG PERSON'S WORKSHOP PARTICIPANT

**A thriving, resilient, socially responsible, local and integrated economy that encourages, supports and advocates for a diverse range of businesses and entrepreneurship, providing local investment and employment opportunities.**

In 2041, Banyule is home to a diverse range of businesses. We are a place where everyone has access to quality education and employment.

Our growth is supported through business partnerships and regional collaborations. We nurture new start-ups and continue to support businesses to grow and be successful.

Doing business in Banyule is easier than ever and becomes a choice for new enterprises.

There is a range of local employment opportunities available for all, and our workplaces embrace diversity and inclusion. More local jobs mean less of us need to travel outside the area for work.

Innovation and technological advancements are embraced, and our social enterprises are well established.

Our city has plenty of education and job training opportunities for people of all ages and abilities, and provides a range of career opportunities, particularly for young people and those returning to the workforce.

Volunteerism is encouraged and promoted as a valuable contributor to the community and local economy.

**"PARTNERING WITH BUSINESS AND EDUCATION TO PROVIDE OPPORTUNITIES AND REAL-LIFE VOCATIONAL EXPERIENCES FOR YOUNG PEOPLE. DEVELOPING THE EDUCATIONAL CAPITAL AND VOCATIONAL OUTCOMES FOR THE FUTURE"**  
HEIDELBERG WEST RESIDENT





# Our trusted and responsive leadership

"BUILDING TRUST BETWEEN LOCAL GOVERNMENT AND COMMUNITY"  
BANYULE COMMUNITY WORKING GROUP MEMBER



"Through every engagement consistently aim for diverse representation"  
ADVISORY COMMITTEE SUMMIT PARTICIPANT

**A responsive, innovative and engaged Council that has the trust of our community through demonstrated best practice governance, is financially sustainable, and advocates on community priorities and aspirations.**

In 2041, Banyule is a trusted, transparent and accountable Council that works in partnership with the community.

We are led by a responsive, innovative, and accessible Council that continually strives to achieve service excellence and positive outcomes for all.

Barriers between Council and Community are diminished and interacting with Council is easier than ever.

We work together to advocate on the matters that are important to the community.

We are a highly engaged community and have a say in decisions that affect us.

We are kept well-informed of Council's progress and achievements through regular reporting and evaluation.

We are a socially, environmentally and financially sustainable community.

Together we achieve Banyule's Community Vision 2041.

"Help to create an informed community, provide access to information to help empower community and for community to understand the roles of different levels of government"

BANYULE COMMUNITY WORKING GROUP MEMBER



# Banyule 2041

## How we will make this Vision reality

**Everyone who lives, works, studies or visits the City of Banyule has an important role to play in achieving this Vision.**

The Community Vision will be implemented through the Council Plan 2021-25. The Council Plan identifies medium-term key directions (strategies), short-term priority actions that work towards the future outcomes identified by the community and outlined in the Vision.

Initiatives will be delivered through partnerships with a range of stakeholders including community groups, service providers, businesses and other levels of government. Council's Integrated Planning Framework ensures that all Council activities and financial resources are aligned to meet the aspirations, needs and expectations of the Banyule community.

Council is committed to ongoing transparency and accountability with its community and partners. Council will continue to prepare progress updates over the life of the Banyule 2041 Community Vision to celebrate achievements, recognise efforts, monitor trends and identify areas for future improvement.

## How to contact your Council

For all enquiries or information about any Council services:

Telephone: **9490 4222**

Email: [enquiries@banyule.vic.gov.au](mailto:enquiries@banyule.vic.gov.au)

Website: [www.banyule.vic.gov.au](http://www.banyule.vic.gov.au)

Fax: **9499 9475**

If your hearing or speech is impaired, you can call us through the National Relay Service on 133 677 (TTY) or 1300 555 727 (ordinary handset) and ask for 9490 4222.

### Postal Address:

PO Box 94, Greensborough 3088

### Council Service Centre:

Greensborough: Level 3, 1 Flintoff Street

### Ivanhoe Library and Cultural Hub

Ivanhoe: 275 Upper Heidelberg Road

### Office Hours of Opening:

Monday – Friday 8.30am – 5pm

### Interpreter service:

If you need an interpreter, please contact TIS National on 131 450 and ask to be connected to Banyule Council on 9490 4222.

إذا كنتم بحاجة إلى مترجم، الرجاء الاتصال بالخط القومي لخدمة الترجمة الهاتفية TIS على الرقم 131 450. واطلبوا إيصالكم ببلدية بانبول على الرقم 9490 4222.

若你需要口譯員，請致電131 450聯絡TIS National，要求他們為你致電9490 4222接通Banyule市政廳。

Ako vam je potreban tumač, molimo vas, nazovite TIS National na broj 131 450 i zatražite da vas se spoji sa Vijećem općine Banyule na broj 9490 4222.

Αν χρειάζεστε διερμηνέα τηλεφωνήστε στην Εθνική Υπηρεσία Διερμηνέων Μεταφραστών στον αριθμό 131 450 και ζητήστε να σας συνδέσουν με τη Δημαρχία Banyule στο 9490 4222.

Se hai bisogno di un interprete chiama TIS National al numero 131 450 e chiedi di essere messo in comunicazione con il Comune di Banyule al numero 9490 4222.

Ако ви треба преведувач ве молиме јавете се на TIS National на 131 450 и замовете да ве поврзат со Banyule Council на 9490 4222.

如果你需要一名翻译，请打电话到国家电话翻译服务处 (TIS National) 131 450，再转接到Banyule市政府9490 4222

Haddii aad u baahan tahay mutarjum wac khadka qaranka oo ah TIS 131 450 weydiina in lagugu xiro Degmada Banyule tel: 9490 4222.

Nếu cần thông dịch, xin gọi cho TIS Toàn Quốc qua số 131 450 rồi nhờ họ gọi cho Hội Đồng Thành Phố Banyule theo số 9490 4222 giúp quý vị.