

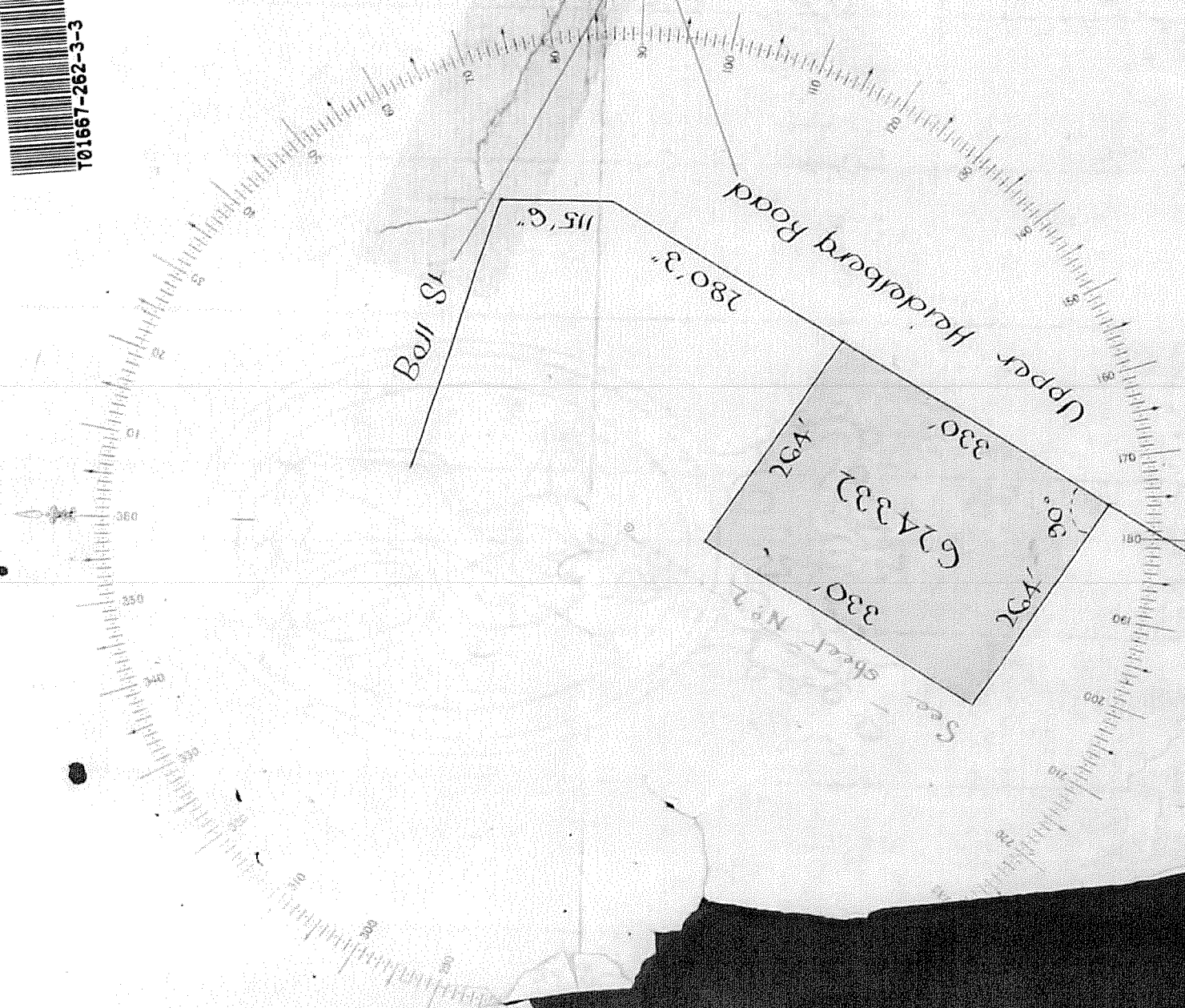
# Titles Office Record of Subdivision

Register Book Vol 1667 fol - 262

SCALE 150 ft to one inch



T01667-262-3-3



Under Letter from  
Secretary  
Heidelberg attn  
S.P. R.D. 1399  
(624332)

SHEET 1.





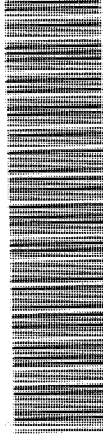
Natural Resources and Environment  
PLANT - MINERAL - CONSERVATION - LAND MANAGEMENT

**INTENTIONALLY**

**BLANK**

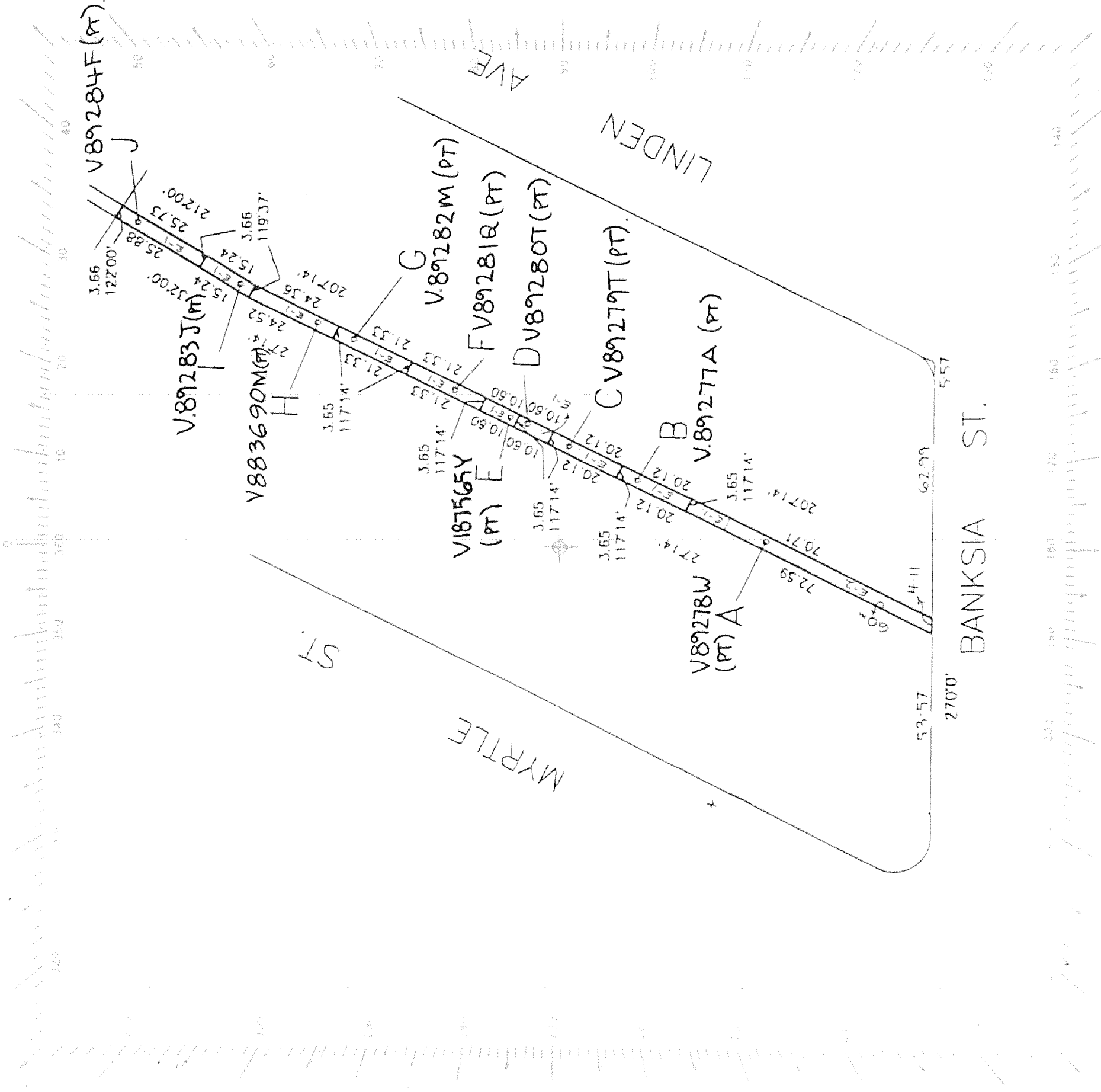
SCALE

Volume 1667 Folio, 262



T01667-262-4-1

TP7866J



SHEET 3





Natural Resources and Environment  
AGP RES JONSF LAND MANAGEMENT

**INTENTIONALLY**

**BLANK**



Nature of Instrument.	Day and Hour of its Production.	Names of the Parties to it.	Number or Symbol thereon.
Transfer as to part and Creation of Easement Cancelled as to the land in Certificate of Title. Vol. 3845 Fol. 76884B	26 <sup>th</sup> October 1914 at 10 am	THE COMMERCIAL BANK OF AUSTRALIA LIMITED to Walter Stephen Aldridge Assistant Registrar of Titles.	762789
Transfer as to part Cancelled as to the land in Certificate of Title. Vol. 3863 Fol. 77253A	5 <sup>th</sup> February 1915 at 2.59 pm.	THE COMMERCIAL BANK OF AUSTRALIA LIMITED to Twentieth Century Building and Investment Society Assistant Registrar of Titles.	768522
Transfer as to part and Creation of Easement Cancelled as to the land in Certificate of Title. Vol. 3864 Fol. 772758	11th February 1915 at 2.4 pm	THE COMMERCIAL BANK OF AUSTRALIA LIMITED to Richard Aldridge Mumford Assistant Registrar of Titles.	768697
Transfer as to part and Creation of Easement Cancelled as to the land in Certificate of Title. Vol. 3873 Fol. 7744A	21 <sup>st</sup> March 1915 at 4.19 am	THE COMMERCIAL BANK OF AUSTRALIA LIMITED to The Federal Building Society Ltd Assistant Registrar of Titles.	771290
Transfer as to part and Creation of Easement Cancelled as to the land in Certificate of Title. Vol. 3885 Fol. 776857	The 22nd May 1915 at 10.30 am	THE COMMERCIAL BANK OF AUSTRALIA LIMITED to Raymond Green Assistant Registrar of Titles.	776016
Transfer as to part and Creation of Easement Cancelled as to the land in Certificate of Title. Vol. 3908 Fol. 781540	20 <sup>th</sup> August 1915 at 2.4 pm	THE COMMERCIAL BANK OF AUSTRALIA LIMITED to Evelyn May Arnott Assistant Registrar of Titles.	783573



For continuation of Endorsements  
Original must be  
presented to  
Registrar of Titles

This is the Steel marked **A**

referred to in the Certificate of Title entered in the Register Book Vol. 1667 Fol. 333262

*W. H. H. H.*

Assistant Registrar of Titles.

Nature of Instrument	Day and Hour of its Production.	Names of the Parties to it	Number or Symbol thereon.
Transfer as to part and Creation of Easement Cancelled as to the land in Certificate of Title. Vol. 3697 Fol. 739371	6th June 1913 at 2.37 pm	The Commercial Bank of Australia Limited to Darius Long Pincher <i>W. H. H. H.</i> Assistant Registrar of Titles.	715974
Transfer as to part and Creation of Easement Cancelled as to the land in Certificate of Title. Vol. 3787 Fol. 757217	1st May 1914 at 2.12 pm	The Commercial Bank of Australia Limited to John H. H. H. <i>W. H. H. H.</i> Assistant Registrar of Titles.	703196
Transfer as to part and Creation of Easement Cancelled as to the land in Certificate of Title. Vol. 3794 Fol. 758749 Area 2 aco 14 per	29th April 1914 at 12.37 pm	The Commercial Bank of Australia Limited to The President Councilors and Ratepayers of the Shire of Beedleberg <i>W. H. H. H.</i> Assistant Registrar of Titles.	744874
Transfer as to part and Creation of Easement Cancelled as to the land in Certificate of Title. Vol. 3800 Fol. 759835	The 26th May 1914 at 2.50 pm.	The Commercial Bank of Australia Limited to Montague Dungey <i>W. H. H. H.</i> Assistant Registrar of Titles.	747998
Transfer as to part and Creation of Easement Cancelled as to the land in Certificate of Title. Vol. 3833 Fol. 766582	22nd September 1914 at 2.26 pm	The Commercial Bank of Australia Limited to John James Corbitt <i>W. H. H. H.</i> Assistant Registrar of Titles.	760631
Transfer as to part Cancelled as to the land in Certificate of Title. Vol. 3845 Fol. 768842	21st October 1914 at 11.28 am	The Commercial Bank of Australia Limited to George Albert Hedge <i>W. H. H. H.</i> Assistant Registrar of Titles.	762531

*Area 2 aco 14 per*



Nature of Instrument.	Day and Hour of its Production.	Names of the Parties to it.	Number or Symbol thereon.
<p>Transfer as to part and Creation of Easement Cancelled as to part; See Certificate of Title. Vol. 4036 Fol. 807042</p>	<p>The 7th March 1917</p>	<p>To — Arthur Martin Davis Assistant Registrar of Titles.</p>	<p>821166</p>
<p>Transfer as to part and Creation of Easement Cancelled as to part; See Certificate of Title. Vol. 4053 Fol. 810536</p>	<p>6th July 1917</p>	<p>To Walter Gardner Assistant Registrar of Titles.</p>	<p>829896</p>
<p>Transfer as to part and Creation of Easement Cancelled as to part; See Certificate of Title. Vol. 4056 Fol. 811055</p>	<p>4th July 1917</p>	<p>To The Federal Building Society. Assistant Registrar of Titles.</p>	<p>829903.</p>
<p>Transfer as to part and Creation of Easement Cancelled as to part; See Certificate of Title. Vol. 4063 Fol. 812488</p>	<p>The 18 August 1917.</p>	<p>To Samuel Hyde. Assistant Registrar of Titles.</p>	<p>833052.</p>
<p>Transfer as to part and Creation of Easement Cancelled as to part; See Certificate of Title. Vol. 4081 Fol. 816107</p>	<p>20th October 1917</p>	<p>To The Federal Building Society. Assistant Registrar of Titles.</p>	<p>837987</p>
<p>Transfer as to part and Creation of Easement Cancelled as to part; See Certificate of Title. Vol. 4103 Fol. 820508</p>	<p>The 6 February 1918.</p>	<p>To The Queeran Land Company Proprietary Limited Assistant Registrar of Titles.</p>	<p>845365.</p>



T01667-262-5-8

For continuation of endorsements see adjacent sheet marked

This is the Sheet marked *B* referred to in the Certificate of Title entered in the Register Book Vol. 1667 Fol 333262  
*Alfred Comport*  
 Assistant Registrar of Titles

Nature of Instrument.	Day and Hour of its Production.	Names of the Parties to it.	Number or Symbol thereon.
Transfer as to part and Creation of Easement Cancelled as to the land in Certificate of Title Vol. 3920 Fol. 783870	30 <sup>th</sup> September 1915 at 4.47 pm	THE COMMERCIAL BANK OF AUSTRALIA LIMITED -to- Charles Keene <i>Alfred Comport</i> Assistant Registrar of Titles.	786350
Transfer as to part and Creation of Easement Cancelled as to the land in Certificate of Title. Vol. 3930 Fol. 785891	5 <sup>th</sup> October 1915 at 3.16 pm	THE COMMERCIAL BANK OF AUSTRALIA LIMITED -to- The Federal Building Society <i>W. H. H. H. H.</i> Assistant Registrar of Titles.	786675
Transfer as to part and Creation of Easement Cancelled as to part; See Certificate of Title Vol. 3970 Fol. 793863	6 <sup>th</sup> June 1916 at 3.7 pm	THE COMMERCIAL BANK OF AUSTRALIA LIMITED -to- Daniel Campbell <i>W. H. H. H. H.</i> Assistant Registrar of Titles.	803058
Transfer as to part and Creation of Easement Cancelled as to part; See Certificate of Title Vol. 3974 Fol. 794749	The 14 <sup>th</sup> June 1916 at 2.42 pm	THE COMMERCIAL BANK OF AUSTRALIA LIMITED -to- John Gahan <i>W. H. H. H. H.</i> Assistant Registrar of Titles.	803730
Transfer as to part and Creation of Easement Cancelled as to part; See Certificate of Title Vol. 3982 Fol. 796397	The 25 <sup>th</sup> July 1916 at 11.36 am	THE COMMERCIAL BANK OF AUSTRALIA LIMITED -to- John William Cornwell <i>W. H. H. H. H.</i> Assistant Registrar of Titles.	806872
Transfer as to part and Creation of Easement Cancelled as to part; See Certificate of Title Vol. 3997 Fol. 799235	The 16 <sup>th</sup> September 1916 at 11 am	THE COMMERCIAL BANK OF AUSTRALIA LIMITED -to- Benjamin Hatch Dyer <i>W. H. H. H. H.</i> Assistant Registrar of Titles.	811001



This is the Sheet marked

C

referred to in Certificate of Title entered in the Register Book Vol. 1667 Fol. 333262



101667-262-7-4

Assistant Registrar of Titles.

Nature of Instrument.	Time of its Production for Registration.	To whom given.	Number or Symbol thereon.
Transfer as to part and Creation of Easement Cancelled as to part; See Certificate of Title Vol. 4103 Fol. 820509	The 6 <sup>th</sup> February 1918	To Elizabeth Eleanor Chilvers. Assistant Registrar of Titles.	846684
Transfer as to part and Creation of Easement Cancelled as to part; See Certificate of Title Vol. 4108 Fol. 820509	The 26 <sup>th</sup> February 1918	To Elizabeth Eleanor Chilvers. Assistant Registrar of Titles.	846685
Transfer as to part and Creation of Easement Cancelled as to part; See Certificate of Title Vol. 4112 Fol. 822391	12 <sup>th</sup> April 1918	To Frank Arthur Phillips. Assistant Registrar of Titles.	850227
Transfer as to part and Creation of Easement Cancelled as to part; See Certificate of Title Vol. 4130 Fol. 821139 Area 2 acres.	The 27 <sup>th</sup> June 1918	To Walter Adams Mayhew. Assistant Registrar of Titles.	850331
Transfer as to part and Creation of Easement Cancelled as to part; See Certificate of Title Vol. 4189 Fol. 837643	The 5 <sup>th</sup> March 1919	To Leonard Gordon Smith and Stanley Hector Smith. Assistant Registrar of Titles.	899711
Transfer as to part and Creation of Easement Cancelled as to part; See Certificate of Title Vol. 4200 Fol. 839814	17 <sup>th</sup> April 1919	To The Federal Building Society. Assistant Registrar of Titles.	880202
Transfer as to part and Creation of Easement Cancelled as to part; See Certificate of Title Vol. 4220 Fol. 841277 Area 2 ac. ord. 37/100 per.	9 <sup>th</sup> May 1919	To John Lee. Assistant Registrar of Titles.	886416
Transfer as to part and Creation of Easement Cancelled as to part; See Certificate of Title Vol. 4211 Fol. 842025	27 <sup>th</sup> May 1919	To Charles Edward Kiel. Assistant Registrar of Titles.	888276

Nature of Instrument.	Time of its Production for Registration.	To whom given.	Number or Symbol thereon.
<p><i>Caveat No 50929</i> Lapsed 4<sup>th</sup> October 1924</p> <p>Transfer as to part and Creation of Easement Cancelled as to part; See Certificate of Title Vol 4274 Fol 804608</p>	<p>3<sup>rd</sup> November 1919</p>	<p>To The Federal Building Society</p> <p>Assistant Registrar of Titles</p>	<p>909069</p>
<p>Transfer as to part and Creation of Easement Cancelled as to part; See Certificate of Title Vol 4274 Fol 804609</p>	<p>9<sup>th</sup> December 1919</p>	<p>To Mildred Nellie McGregor</p> <p>Assistant Registrar of Titles</p>	<p>914606</p>
<p>Transfer as to part and Creation of Easement Cancelled as to part; See Certificate of Title Vol 4310 Fol 861936</p>	<p>10<sup>th</sup> April 1920</p>	<p>To Annie Durant</p> <p>Assistant Registrar of Titles</p>	<p>933542</p>
<p>Transfer as to part and Creation of Easement Cancelled as to part; See Certificate of Title Vol 4329 Fol 865773</p>	<p>15<sup>th</sup> May 1920</p>	<p>To Elizabeth Parker</p> <p>Assistant Registrar of Titles</p>	<p>940779</p>
<p>Transfer as to part and Creation of Easement Cancelled as to part; See Certificate of Title Vol 4335 Fol 866905</p>	<p>14<sup>th</sup> September 1919</p>	<p>To David James McDonough</p> <p>Assistant Registrar of Titles</p>	<p>900616</p>
<p>Transfer as to part and Creation of Easement Cancelled as to part; See Certificate of Title Vol 4354 Fol 867777</p>	<p>5<sup>th</sup> August 1920</p>	<p>To Henrietta Hendry</p> <p>Assistant Registrar of Titles</p>	<p>955799</p>
<p>Transfer as to part and Creation of Easement Cancelled as to part; See Certificate of Title Vol 4394 Fol 868757</p>	<p>14<sup>th</sup> October 1920.</p>	<p>To Ina Eliza Edmonds.</p> <p>Assistant Registrar of Titles</p>	<p>969196</p>
<p>Transfer as to part and Creation of Easement Cancelled as to part; See Certificate of Title Vol 4394 Fol 868758</p>	<p>14<sup>th</sup> October 1920.</p>	<p>To Henry Blatworthy Edmonds.</p> <p>Assistant Registrar of Titles</p>	<p>969197</p>

For continuation of endorsements see annexed sheet marked D



Nature of Instrument.	Time of its Production for Registration.	To whom given.	Number or Symbol thereon.
4458 896524	29th August 1921	for Mabel B. G. 1921 D. W. T. Comport.	1010982
4183 896525	20th August 1921	The Commission of the State Savings Bank of Victoria. D. W. T. Comport.	
TRANSFER as to part and CREATION OF EASEMENT to Herbert Frederick Mitchell registered on 13th October 1921 and numbered 1011111.		TRANSFER as to part and CREATION OF EASEMENT to Thomas Alfred Gines and numbered 1011111.	
CANCELLED as to part See Certificate of Title Vol. 4499 Fol. 899662		CANCELLED as to part See Certificate of Title Vol. 4505 Fol. 912830	
Assistant Registrar of Titles.		Assistant Registrar of Titles.	
TRANSFER as to part and CREATION OF EASEMENT to Augusta Hold registered on 20th January 1922 and numbered 1027430.		TRANSFER as to part and CREATION OF EASEMENT to Ho William Lewis Hannah registered on 26th May 1922 and numbered 1047132.	
4527 905301 D. W. T. Comport.		CANCELLED as to part See Certificate of Title Vol. 4572 Fol. 914215	
Assistant Registrar of Titles.		Assistant Registrar of Titles.	
TRANSFER as to part and CREATION OF EASEMENT to Augusta Hold registered on 20th January 1922 and numbered 1027430.		TRANSFER as to part and CREATION OF EASEMENT to THE COMMISSIONERS OF THE STATE SAVINGS BANK OF VICTORIA, registered on 8th June 1922 and numbered 1048940.	
4527 905302 D. W. T. Comport.		CANCELLED as to part See Certificate of Title Vol. 4578 Fol. 913418	
Assistant Registrar of Titles.		Assistant Registrar of Titles.	
TRANSFER as to part and CREATION OF EASEMENT to Ruth Helena Dean registered on 24th March 1922 and numbered 1038190.		TRANSFER as to part and CREATION OF EASEMENT to John James Cornhill registered on 14th June 1922 and numbered 1050004.	
4551 910123 D. W. T. Comport.		CANCELLED as to part See Certificate of Title Vol. 4586 Fol. 917067	
Assistant Registrar of Titles.		Assistant Registrar of Titles.	
TRANSFER as to part to Vera Hancock registered on 29th March 1922 and numbered 1049666.		TRANSFER as to part and CREATION OF EASEMENT to John James Cornhill registered on 14th June 1922 and numbered 1050005.	
4551 911126 D. W. T. Comport.		CANCELLED as to part See Certificate of Title Vol. 4586 Fol. 917067	
Assistant Registrar of Titles.		Assistant Registrar of Titles.	
TRANSFER as to part and CREATION OF EASEMENT to Augusta Hold registered on 20th January 1922 and numbered 1027430.		TRANSFER as to part and CREATION OF EASEMENT to Augusta Hold registered on 20th January 1922 and numbered 1027430.	
4551 911126 D. W. T. Comport.		CANCELLED as to part See Certificate of Title Vol. 4586 Fol. 917067	
Assistant Registrar of Titles.		Assistant Registrar of Titles.	
TRANSFER as to part and CREATION OF EASEMENT to Augusta Hold registered on 20th January 1922 and numbered 1027430.		TRANSFER as to part and CREATION OF EASEMENT to Augusta Hold registered on 20th January 1922 and numbered 1027430.	
4551 911126 D. W. T. Comport.		CANCELLED as to part See Certificate of Title Vol. 4586 Fol. 917067	
Assistant Registrar of Titles.		Assistant Registrar of Titles.	

This is the Sheet marked **D** referred to in Certificate of Title entered in the Register Book Vol. 1664 Fol. 333262  
*W. H. Anderson.*

ORIGINAL

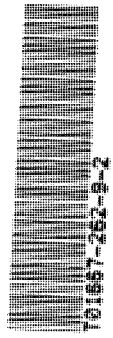
Assistant Registrar of Titles.

Nature of Instrument.	Time of its Production for Registration.	To whom given.	Number or Symbol thereon.
Transfer as to part and Creation of Easement Cancelled as to part; See Certificate of Title Vol 4394 Fol. 878759	5 <sup>th</sup> November 1920.	To Alfred Charles Plowman.	971724  <i>W. H. Anderson</i> Assistant Registrar of Titles.
Transfer as to part and Creation of Easement Cancelled as to part; See Certificate of Title Vol 4394 Fol. 878760	5 <sup>th</sup> November 1920.	To Harry Victor Plowman.	971725  <i>W. H. Anderson</i> Assistant Registrar of Titles.
Transfer as to part and Creation of Easement Cancelled as to part; See Certificate of Title Vol 4394 Fol. 878761	18 <sup>th</sup> November 1920.	To Arthur Bulstade	974156  <i>W. H. Anderson</i> Assistant Registrar of Titles.
Transfer as to part and Creation of Easement Cancelled as to part; See Certificate of Title Vol 4408 Fol. 881403	15 <sup>th</sup> October 1920.	To John Charles Swomey	968325  <i>W. H. Anderson</i> Assistant Registrar of Titles.
Transfer as to part and Creation of Easement Cancelled as to part; See Certificate of Title Vol 4408 Fol. 881404	14 <sup>th</sup> December 1920.	To Elizabeth Amy Green.	978793.  <i>W. H. Anderson</i> Assistant Registrar of Titles.
Transfer as to part and Creation of Easement Cancelled as to part; See Certificate of Title Vol 4426 Fol. 885067	18 <sup>th</sup> February 1921.	To Ellen Elizabeth Thompson	985888  <i>W. H. Anderson</i> Assistant Registrar of Titles.
Transfer as to part and Creation of Easement Cancelled as to part; See Certificate of Title Vol 4439 Fol. 887792	14 <sup>th</sup> April 1921.	To Gertrude Stam	992222  <i>W. H. Anderson</i> Assistant Registrar of Titles.
Transfer as to part and Creation of Easement Cancelled as to part; See Certificate of Title Vol 4461 Fol. 892617	28 <sup>th</sup> June 1921.	To Arthur Phillips	1002660  <i>W. H. Anderson</i> Assistant Registrar of Titles.
Transfer as to part and Creation of Easement Cancelled as to part; See Certificate of Title Vol 4471 Fol. 894136	26 <sup>th</sup> July 1921	To Marion Denny	100600  <i>W. H. Anderson</i> Assistant Registrar of Titles.



Nature of Instrument.	Time of its Production for Registration.	To whom given.	Number or Symbol thereon.
TRANSFER as to part to <i>John Thomas Harens</i> registered on 23 <sup>rd</sup> August 1923 and numbered 1123459 CANCELLED as to part See Certificate of Title Vol. 4752 Fol. 950365 <i>Supra. Compromis</i> Assistant Registrar of Titles. TRANSFER as to part to <i>Caroline Crabtree</i> registered on 28 <sup>th</sup> November 1923 and numbered 1139787 CANCELLED as to part See Certificate of Title Vol. 4786 Fol. 957136 <i>Supra. Compromis</i> Assistant Registrar of Titles.	<i>John Thomas Harens</i> registered on 23 <sup>rd</sup> August 1923 and numbered 1123459 CANCELLED as to part See Certificate of Title Vol. 4752 Fol. 950365 <i>Supra. Compromis</i> Assistant Registrar of Titles. <i>Caroline Crabtree</i> registered on 28 <sup>th</sup> November 1923 and numbered 1139787 CANCELLED as to part See Certificate of Title Vol. 4786 Fol. 957136 <i>Supra. Compromis</i> Assistant Registrar of Titles.	TRANSFER as to part to <i>James Michael Quarmy</i> registered on 3 <sup>rd</sup> October 1924 and numbered 1186780 CANCELLED as to part See Certificate of Title Vol. 4917 Fol. 983380 <i>John A. Harens</i> Assistant Registrar of Titles. TRANSFER as to part to <i>Carlisle Carter</i> registered on 23 <sup>rd</sup> October 1924 and numbered 1189531. CANCELLED as to part See Certificate of Title Vol. 4917 Fol. 983380 <i>John A. Harens</i> Assistant Registrar of Titles.	
TRANSFER as to part to <i>Sylvia Lawrey.</i> registered on 4 <sup>th</sup> December 1923 and numbered 11344411 CANCELLED as to part See Certificate of Title Vol. 4786 Fol. 957136 <i>Supra. Compromis</i> Assistant Registrar of Titles.	<i>Sylvia Lawrey.</i> registered on 4 <sup>th</sup> December 1923 and numbered 11344411 CANCELLED as to part See Certificate of Title Vol. 4786 Fol. 957136 <i>Supra. Compromis</i> Assistant Registrar of Titles.	<i>Adelaide Eliza Hart</i> 28 <sup>th</sup> May 1925 and numbered 1217310. CANCELLED as to part See Certificate of Title Vol. 4997 Fol. 999300 <i>John A. Harens</i> Assistant Registrar of Titles. TRANSFER as to part to <i>Pauline Sarah Owen</i> registered on 24 <sup>th</sup> July 1925 and numbered 1225468 CANCELLED as to part See Certificate of Title Vol. 5018 Fol. 1003566 <i>John A. Harens</i> Assistant Registrar of Titles.	
TRANSFER as to part to <i>Martha Lewis.</i> registered on 13 <sup>th</sup> February. 1924 and numbered 1150880. CANCELLED as to part See Certificate of Title Vol. 4813 Fol. 952412 <i>W. H. Patterson</i> Assistant Registrar of Titles.	<i>Martha Lewis.</i> registered on 13 <sup>th</sup> February. 1924 and numbered 1150880. CANCELLED as to part See Certificate of Title Vol. 4813 Fol. 952412 <i>W. H. Patterson</i> Assistant Registrar of Titles.	Transfer as to part to <i>Robert Gray</i> <i>John</i> registered on 6 <sup>th</sup> August 1926 and numbered 1279113. CANCELLED as to part See Certificate of Title Vol. 5102 Fol. 1032219 <i>John A. Harens</i> Assistant Registrar of Titles. Transfer as to part to <i>Violet Emily McDonough</i> registered on 16 <sup>th</sup> December 1926 and numbered 1298321 CANCELLED as to part See Certificate of Title Vol. 5215 Fol. 1042957 <i>John A. Harens</i> Assistant Registrar of Titles.	
TRANSFER as to part to <i>Philip Augustus Greenaway</i> registered on 5 <sup>th</sup> August 1924 and numbered 1178267 CANCELLED as to part See Certificate of Title Vol. 4886 Fol. 977154 <i>W. H. Patterson</i> Assistant Registrar of Titles.	<i>Philip Augustus Greenaway</i> registered on 5 <sup>th</sup> August 1924 and numbered 1178267 CANCELLED as to part See Certificate of Title Vol. 4886 Fol. 977154 <i>W. H. Patterson</i> Assistant Registrar of Titles.	TRANSFER AS TO PART TO <i>THE EQUITY TRUSTEES EXECUTORS AND AGENCY COMPANY LIMITED</i> registered on 25 <sup>th</sup> November 1920 numbered 1795607 CANCELLED AS TO PART See Certificate of Title Vol. 6467 Fol. 1293225 <i>W. H. Patterson</i> Assistant Registrar of Titles.	
TRANSFER as to part to <i>Sarah Ann Brown</i> registered on 21 <sup>st</sup> August 1924 and numbered 1180613 CANCELLED as to part See Certificate of Title Vol. 4906 Fol. 981113 <i>W. H. Patterson</i> Assistant Registrar of Titles.	<i>Sarah Ann Brown</i> registered on 21 <sup>st</sup> August 1924 and numbered 1180613 CANCELLED as to part See Certificate of Title Vol. 4906 Fol. 981113 <i>W. H. Patterson</i> Assistant Registrar of Titles.		

Continuation of Endorsement  
see annexed sheet marked  
*Continuation*  
ASSISTANT REGISTRAR OF TITLES





This is the Sheet marked *E* referred to in the Certificate of Title entered in the Register Book Vol. 1667 Fol. 333262.

Assistant Registrar of Titles.

Nature of Instrument	Time of its Production for Registration.	To whom given.	Number or Symbol thereon.
TRANSFER as to part and CREATION OF EASEMENT to <i>Reginald James Hughson Addicott</i> 12 <sup>th</sup> September 1922 and numbered 1065062 CANCELLED as to part See Certificate of Title Vol. 4615 Fol. 922979 <i>Wm. W. Compston</i> Ass. Registrar of Titles.		TRANSFER as to part to <i>Thomas Walter Athanas</i> registered on 19 <sup>th</sup> March 1923. and numbered 1094535. CANCELLED as to part See Certificate of Title. Vol. 4679 Fol. 935800 <i>Wm. W. Compston</i> Assistant Registrar of Titles.	
TRANSFER as to part and CREATION OF EASEMENT to <i>Thomas James</i> 18 <sup>th</sup> September 1922 and numbered 1066057 CANCELLED as to part See Certificate of Title Vol. 4627 Fol. 925364 Assistant Registrar of Titles.		TRANSFER as to part to <i>Lamuel Booley</i> registered on 11 <sup>th</sup> April 1923 and numbered 1098228 CANCELLED as to part See Certificate of Title. Vol. 4697 Fol. 939247 <i>Wm. W. Compston</i> Assistant Registrar of Titles.	
TRANSFER as to part and CREATION OF EASEMENT to <i>Jack Nuttall</i> 17 <sup>th</sup> October 1922 and numbered 1069635 CANCELLED as to part See Certificate of Title Vol. 4627 Fol. 925365 Assistant Registrar of Titles.		TRANSFER as to part to <i>Montague Dungey</i> registered on 2 <sup>nd</sup> July 1923 and numbered 1113362. CANCELLED as to part See Certificate of Title Vol. 4720 Fol. 943928 <i>Wm. W. Compston</i> Assistant Registrar of Titles.	
TRANSFER as to part and CREATION OF EASEMENT to <i>Lamuel Booley</i> 19 <sup>th</sup> October 1922 and numbered 1071047 CANCELLED as to part See Certificate of Title Vol. 4627 Fol. 925366 Assistant Registrar of Titles.		TRANSFER as to part to <i>Alexander Ward</i> registered on 3 <sup>rd</sup> July 1923. and numbered 1113379 CANCELLED as to part See Certificate of Title Vol. 4720 Fol. 943929 <i>Wm. W. Compston</i> Assistant Registrar of Titles.	
TRANSFER as to part to <i>Mary Fleming</i> registered on 13 <sup>th</sup> October 1922 and numbered 1070754 CANCELLED as to part See Certificate of Title Vol. 4652 Fol. 930344 Assistant Registrar of Titles.		TRANSFER as to part to <i>Alfred Edwin Linton</i> registered on 12 <sup>th</sup> July 1923. and numbered 1115370 CANCELLED as to part See Certificate of Title Vol. 4735 Fol. 946951 <i>Wm. W. Compston</i> Assistant Registrar of Titles.	
TRANSFER as to part to <i>Montague Dungey</i> registered on 22 <sup>nd</sup> February 1923 and numbered 1090294 CANCELLED as to part See Certificate of Title Vol. 4669 Fol. 933614 Assistant Registrar of Titles.		TRANSFER as to part to <i>Alice Goodman</i> registered on 11 <sup>th</sup> August 1923 and numbered 1120981 CANCELLED as to part See Certificate of Title Vol. 4752 Fol. 950364 <i>Wm. W. Compston</i> Assistant Registrar of Titles.	



This endorsement must be made on the duplicate.

TRANSFER AS TO PART No. V89283

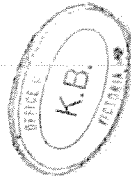
registered 12-11-97

CANCELLED AS TO PART

See Vol. 10358 Fol. 284

Lot 1 TP 78663

LGD 8002



This endorsement must be made on the duplicate.

TRANSFER AS TO PART No. V8

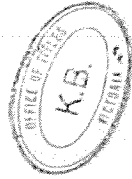
registered 12-11-97

CANCELLED AS TO PART

See Vol. 10358 Fol. 285

Lot 3 TP 78663

LGD 8002



This endorsement must be made on the duplicate.

TRANSFER AS TO PART No. V107565

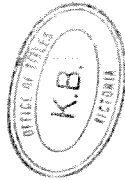
registered 7-1-98

CANCELLED AS TO PART

See Vol. 10365 Fol. 597

Lot E TP 78663

LGD 8002



This endorsement must be made on the duplicate.

TRANSFER AS TO PART No V883690 M

registered 9-2-99

CANCELLED AS TO PART

See Vol. 10459 Fol. 079

Lot H 02 TP 78663

LGD 8002



101667-262-10-0

This is the Sheet marked **F**

referred to in Certificate of Title entered in the Register Book Vol. **1967** Fol. **262**

**ORIGINAL**

Assistant Registrar of Titles

TRANSFER AS TO PART TO

*Annie Elvira Wood* registered  
on 26 JUN 1952 numbered **2500788**  
CANCELLED AS TO PART See Certificate of  
Title Vol. **7740** Fol. **091**

**CAVEAT NO. C959837 LOGGED**

Affecting part of a road herein See Caveats

**CAVEAT WITHDRAWN**

28 FEB 1968

Assistant Registrar of Titles

11 DEC 1967

See Caveats



TRANSFER AS TO PART No. **E59212**

registered **1st June 1971**

See **L.G.D. file No 474**  
CANCELLED AS TO PART

See Vol **8895** Fol. **140**

Not entered on Duplicate

pursuant to Section **528**

**Act 6299**



This endorsement must be made on duplicate.

TRANSFER AS TO PART No. **R807792Y**

registered **4-3-98**

CANCELLED AS TO PART

See Vol. **10078** Fol. **763**



**CANCELLED** *As to Part*

PURSUANT TO SECTION 24 SUBDIVISION  
ACT 1988 AND TITLES ISSUED AS SET  
OUT HEREUNDER.

Registered **15-9-92**

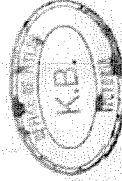
No **B314200V**

**LotsONE to 2** in Vol **10076** Fol **956**  
to Vol **10076** Fol **957**

Reserve No. **CONE** in Vol **10076** Fol **958**

Reserve No. **3** in Vol **10076** Fol **959**

Titles not issued for Road(s) which  
are vested as shown on the Plan.



This endorsement must be made on duplicate.

TRANSFER AS TO PART AND  
PLAN OF SUBDIVISION

TRANSFER REGISTERED **8-9-93**  
PLAN OF CONSOL REGISTERED **31-5-94**  
CANCELLED

SEE VOL **3617265J** Fol **5**

Nos **3617265J**

**3617265J**



**LotsONE to 2** in Vol **10171** Fol **508**

to Vol **10171** Fol **509**

Road **R1** in Vol **10171** Fol **510**

TRANSFER AS TO PART No. **V89277A**

registered **12-11-97**

CANCELLED AS TO PART

See Vol. **10358** Fol. **279**

**Lots B TP 7866J**

**LGD 8002**



TRANSFER AS TO PART No. **V89278W**

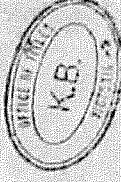
registered **12-11-97**

CANCELLED AS TO PART

See Vol. **10358** Fol. **278**

**Lots A TP 7866J**

**LGD 8002**



TRANSFER AS TO PART No. **V89279T**

registered **12-11-97**

CANCELLED AS TO PART

See Vol. **10358** Fol. **280**

**Lots C TP 7866J**

**LGD 8002**



TRANSFER AS TO PART No. **V89280T**

registered **12-11-97**

CANCELLED AS TO PART

See Vol. **10358** Fol. **281**

**Lots D TP 7866**

**LGD 8002**



TRANSFER AS TO PART No. **V89281A**

registered **12-11-97**

CANCELLED AS TO PART

See Vol. **10358** Fol. **282**

**Lots E TP 7866**

**LGD 8002**



TRANSFER AS TO PART No. **V89282M**

registered **12-11-97**

CANCELLED AS TO PART

See Vol. **10358** Fol. **283**

**Lots F TP 7866J**

**LGD 8002**





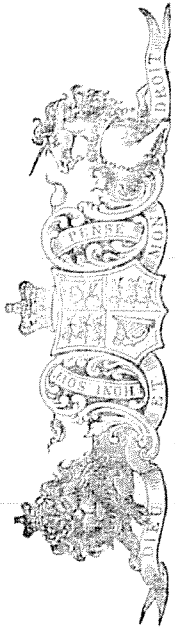
89.15

FULLY CONVERTED TITLE

THIS IS A SUPERSEDED FOLIO OF THE REGISTER. Both text and diagram for this folio have been fully converted to a computer folio.

CANCELLED

Entered in the Register Book



VICTORIA

Vol 3428 685408

CANCELLED

# Certificate of Title

UNDER THE "TRANSFER OF LAND ACT 1890."

The Melbourne and Metropolitan Board of Works of Spencer Street Melbourne is now the proprietor of an Estate in Free-simple, subject to the Encumbrances notified hereunder in All that piece of Land, situate and coloured as laid on the map in the margin, containing two acres or thereabouts, being part of Crown portion three, Parish of Reebundora, County of Bourke

ORIGINAL CERTIFICATE.  
Not to be dealt with outside the Titles Office.

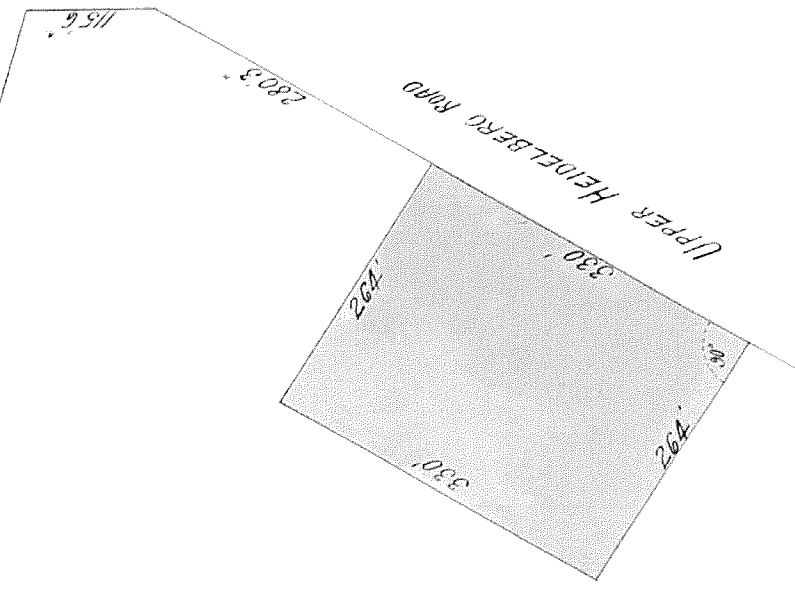
Dated the Twenty first day of June One thousand nine hundred and ten

M. A. R. U. Y.

Assistant Registrar of Titles.

ENCUMBRANCES REFERRED TO.

BELL STREET



PLAN S314700V X35  
AFFECTS LAND HEREIN



T03428-408-1-9

The Measurements are in feet and inches

W.R.

**FULLY CONVERTED TITLE**

THIS IS A SUPERSEDED FOLIO OF THE REGISTER. Both text and diagram for this folio have been fully converted to a computer folio.

Vol. 667 Fol. 333262 Transfer 624332 Application

Nature of Instrument.	Day and Hour of its Production.	Names of the Parties to it.	Number or Symbol thereon.
ROAD CONSTRUCTION AUTHORITY HAS PURSUANT TO SECTION 10(1) OF THE LAND ACQUISITION AND COMPENSATION ACT 1986 NOTICED THE SERVICE OF INTENTION TO ACQUIRE A PART OF THE LAND HEREIN PURSUANT TO SECTION 6 OF THE ACT AND HAS NOMINATED THE ADDRESS HEREUNDER FOR THE SERVICE OF NOTICES		Assistant Registrar of Titles.	
PURSUANT TO SECTION 12(2) OF THAT ACT DATE OF SERVICE OF NOTICE OF INTENTION 14/3/89 ADDRESS FOR SERVICE OF NOTICES 60 DENMARK ST. KEW DATED 22/3/89 P90877C		Assistant Registrar of Titles.	
TRANSFER AS TO PART NO. 5238760 <sup>4</sup> registered 26/11/92 CANCELLED AS TO PART See Vol. 10108 Fol. 023 RESERVE NO. 2		Assistant Registrar of Titles.	
RESERVE NO. 2. 10108 Fol. 022 LOT 4 CANCELLED SEE VOL. 10108 Fol. 022 LOT 4 WHICH IS TRANSFERRED PURSUANT TO SECTION 32(1) ACT 6088 REGISTERED 26/11/92 No. 5238760 <sup>4</sup>		Assistant Registrar of Titles.	
<b>CANCELLED</b>		Assistant Registrar of Titles.	
		Assistant Registrar of Titles.	
		Assistant Registrar of Titles.	



CONTINUED AS A  
COMPUTER FOLIO

ORIGINAL

NOT TO BE TAKEN FROM THE OFFICE  
OF TITLES

VICTORIA

## Certificate of Title

UNDER THE "TRANSFER OF LAND ACT"

REGISTER BOOK

VOL. 10108 FOL. 022

MELBOURNE WATER CORPORATION is the proprietor of an estate in fee simple subject to the encumbrances notified hereunder in all that land in the Parish of Keelbundora being Lot 4 on Plan of Subdivision No. 314700V -

Derived From S238760G  
Vol. 3428 Fol. 408

26/11/92



*P L Matthews*  
Assistant Registrar of Titles

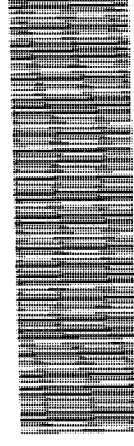
## ENCUMBRANCES REFERRED TO

Any encumbrances created by Section 98 of the Transfer of Land Act 1958 or Section 24 of the Subdivision Act 1988-

Any other encumbrances shown or entered on the said Plan-

DATA VERIFIED  
27 AUG 1993

TEXT CONTAINED



T10108-022-1-8

SEE PS314700V FOR BOUNDARIES AND OTHER DETAILS

FULLY CONVERTED TITLE

THIS IS A SUPERSEDED FOLIO OF THE REGISTER. Both text and diagram for this folio have been fully converted to a computer folio.

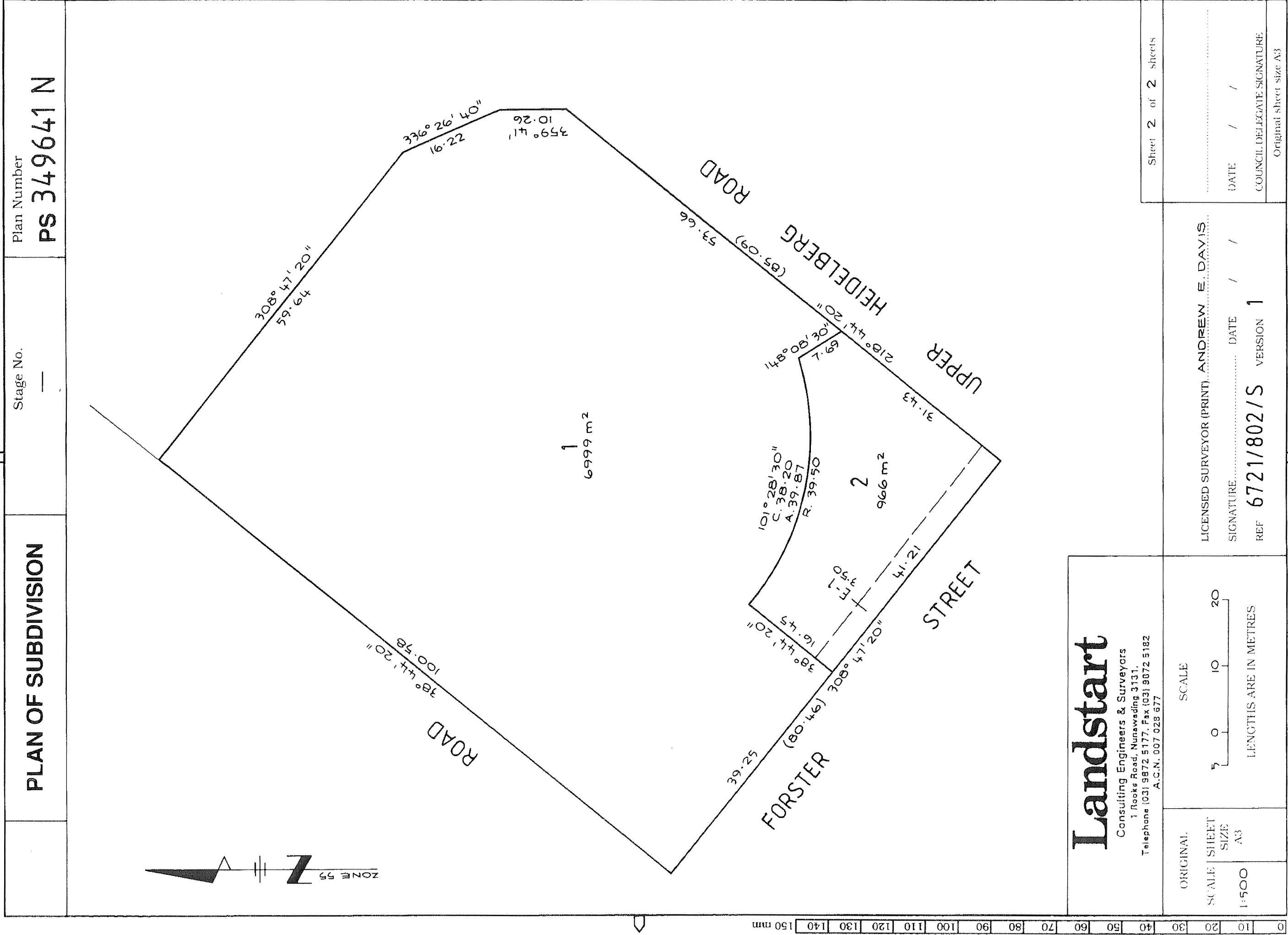
VOL. 10108 FOL. 022

CONTINUED AS A  
COMPUTER FOLIO



8630

PLAN OF SUBDIVISION		STAGE NO. —	LTO use only <b>EDITION 1</b>	Plan Number <b>PS 349641N</b>
<b>Location of Land</b>  Parish: KEELBUNDORA  Township: Section: Crown Allotment: Crown Portion: 3 (PART)  LTO Base Record: CHART 74 (2856) Title Reference: VOL.10108 FOL.022  Last Plan Reference: PS 314700 V (LOT 4) Postal Address: UPPER HEIDELBERG ROAD (at time of subdivision) HEIDELBERG  AMG Co-ordinates E 328500 Zone: 55 (of approx. centre of land in plan) N 5819250		<b>Council Certificate and Endorsement</b>  Council Name: CITY OF BANYULE Ref: C42/96  1. This plan is certified under section 6 of the Subdivision Act 1988. <del>2. This plan is certified under section 11(7) of the Subdivision Act 1988.</del> <del>Date of original certification under section 6</del> / /  3. This is a statement of compliance issued under section 21 of the Subdivision Act 1988.  OPEN SPACE  (i) A requirement for public open space under section 18 of the Subdivision Act 1988 has not been made. (ii) The requirement has been satisfied. (iii) The requirement is to be satisfied in Stage.....  Council delegate <del>Council seal</del> Date 22 / 5 / 96  Re-certified under section 11(7) of the Subdivision Act 1988  Council Delegate Council Seal  Date / /  <b>Notations</b>  <b>Staging</b> This <input checked="" type="checkbox"/> /Is not a staged subdivision Planning Permit No.  <b>Depth Limitation</b>  DOES NOT APPLY		
<b>Vesting of Roads and/or Reserves</b>				
Identifier	Council/Body/Person			
NIL	NIL			
<b>Survey</b> This plan is <input checked="" type="checkbox"/> based on survey  This survey has been connected to permanent marks no(s) In Proclaimed Survey Area No.				
<b>Easement Information</b>				
<b>Legend:</b> E - Encumbering Easement or Condition in Crown Grant in the Nature of an Easement A - Appurtenant Easement R - Encumbering Easement (Road)				
Easement Reference	Purpose	Width (Metres)	Origin	Land Benefited/In Favour Of
E-1	PIPELINE	3.50	THIS PLAN	YARRA VALLEY WATER LTD
<b>LTO use only</b>  Statement of Compliance/Exemption Statement  Received <input checked="" type="checkbox"/> Date 12 / 7 / 96  <b>LTO use only</b> PLAN REGISTERED TIME 3.40pm DATE 1 / 8 / 96  Assistant Registrar of Titles  Sheet 1 of 3 Sheets				
<b>Landstart</b> Consulting Engineers & Surveyors 1 Rocks Road, Nunawading 3131. Telephone (03) 9872 5177, Fax (03) 9872 5182 A.C.N. 007 028 677		LICENSED SURVEYOR (PRINT) ANDREW E. DAVIS  SIGNATURE..... DATE 27 / 3 / 96  REF 6721/801/S VERSION 1		
COUNCIL DELEGATE SIGNATURE Original sheet size A3				





	PLAN OF SUBDIVISION	Stage No. —	Plan Number PS 349641N
--	---------------------	----------------	---------------------------

SUBDIVISION ACT 1988  
CREATION OF RESTRICTION

ON REGISTRATION OF THIS PLAN THE FOLLOWING RESTRICTION IS CREATED:

LAND TO BENEFIT: LOT 1  
LAND TO BE BURDENED: LOT 2

DESCRIPTION OF RESTRICTION: THE REGISTERED PROPRIETOR OR PROPRIETORS  
FOR THE TIME BEING OF LOT 2 ON THIS PLAN OF SUBDIVISION SHALL NOT:

1. CONSTRUCT ANY STRUCTURE WITHIN, EXCAVATE OR DISTURB THE AREA HATCHED  
IN THE SCHEDULE

SCHEDULE



Landstart  
Certified to ISO 9001 DLQ NO. 2054  
Consulting Engineers & Land Surveyors  
1 Rocks Road, Nunawading 3131  
Telephone (03) 9 872 5177, Fax (03) 9 872 5182  
A.C.N 007 028 677



LICENSED SURVEYOR (PRINT) ANDREW E. DAVIS  
SIGNATURE DATE / /  
REF 6721/803/S VERSION 1

Sheet 3 of 3 Sheets
DATE / /
COUNCIL DELEGATE SIGNATURE
Original sheet size A3

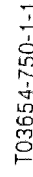
THIS IS A SUPERSEDED FOLIO OF THE REGISTER. Both text and diagram for this folio have been fully converted to a computer folio.

# VICTORIA

UNDER THE "TRANSFER OF LAND ACT 1890."

now the proprietor of an Estate in Fee-simple, subject to the Encumbrances notified hereunder in All that piece of Land, delineated and coloured red on the map in the margin, being Lot 91 on Plan of Subdivision No. 5824 lodged in the Office of Titles and being part of Crown Portion Three Parish of Keelbundora -- County of Bourke Together with a right of carriage way over the roads colored ---- brown on said Plan of Subdivision -----

*Assistant Registrar of Titles.*





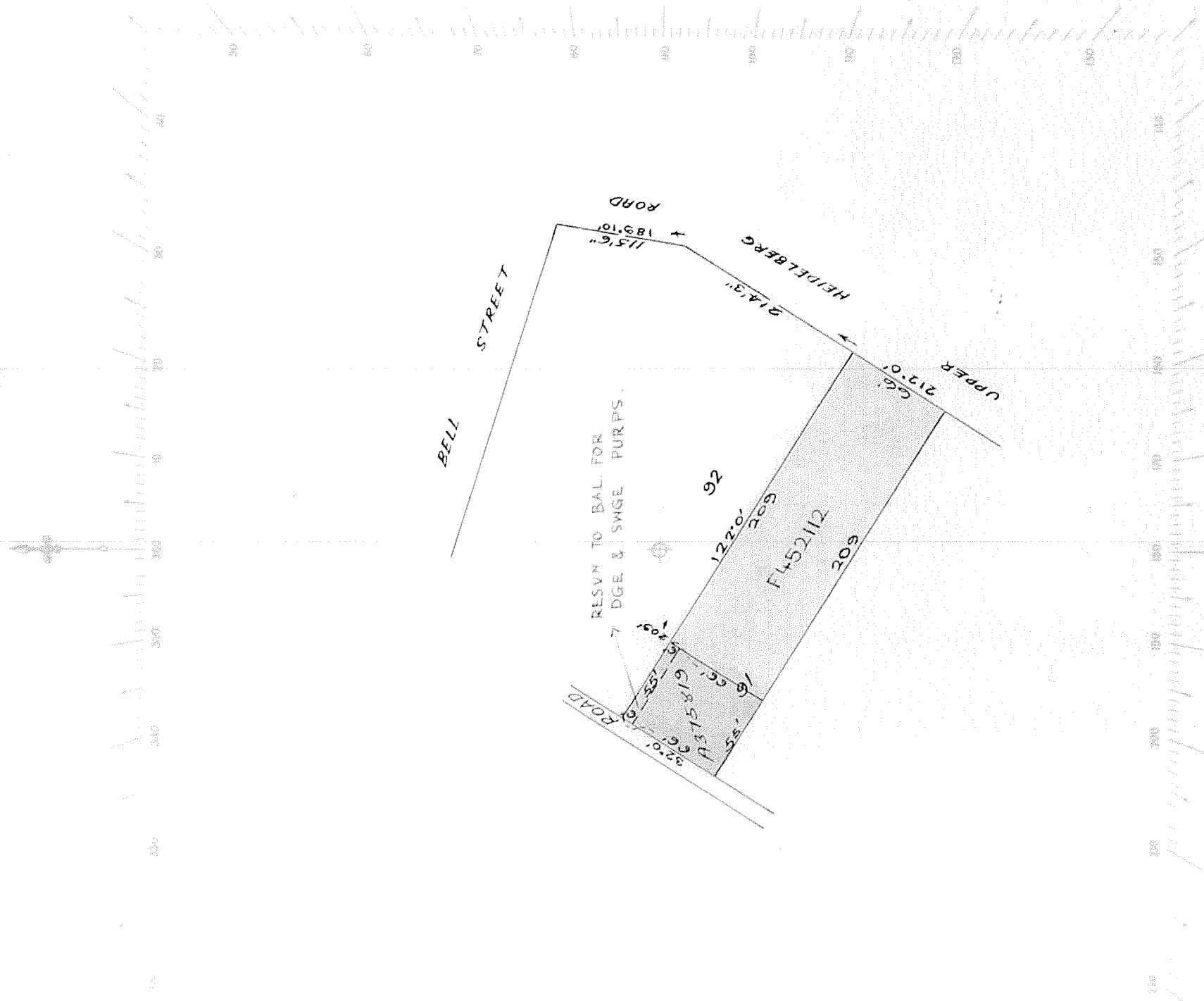


FULLY CONVERTED TITLE

THIS IS A SUPERSEDED FOLIO OF THE REGISTER. Both text and diagram for this folio have been fully converted to a computer folio.

SCALE: 80 FEET TO ONE INCH

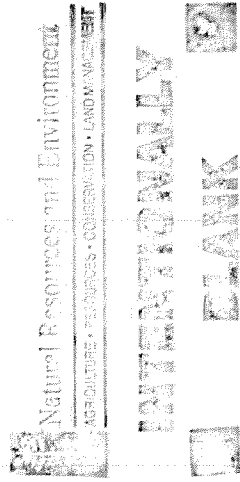
Vol. 3654 Fol. 750





**FULLY CONVERTED TITLE**

THIS IS A SUPERSEDED FOLIO OF THE REGISTER. Both text and diagram for this folio have been fully converted to a computer folio.



ORIGINAL

NOT TO BE TAKEN FROM  
THE OFFICE OF TITLES



VICTORIA

REGISTERED  
Entered in the Register Book

Vol. 8161 Fol. 742

FULLY CONVERTED TITLE

THIS IS A SUPERSEDED FOLIO OF THE REGISTER. Both text and diagram for this folio have been fully converted to a computer folio.

# Certificate of Title

UNDER THE "TRANSFER OF LAND ACT 1954"

Melbourne and Metropolitan Board of Works of 110 Spencer Street Melbourne is -

now the proprietor - - - - -

of an Estate in Fee-simple subject to the Encumbrances notified hereunder in

All that piece of Land, delineated and coloured red and blue on the map in-

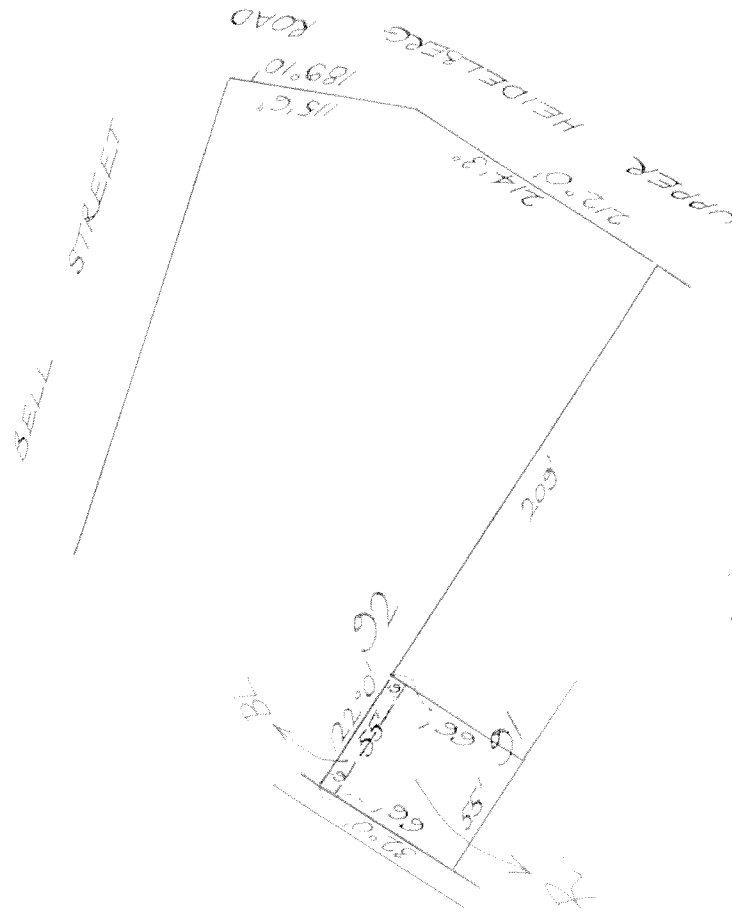
the margin being part of Lot 91 on Plan of Subdivision No.5824 lodged in the - - -

Office of Titles and being part of Crown Portion 3 Parish of Keelbundora - - - -

Together with a right of carriage way over the roads coloured brown on the said - -

Plan of Subdivision - - - - -

Dated the Twenty-sixth day of July One  
thousand nine hundred and fifty-seven.



*[Signature]*  
Assistant Registrar of Titles

## ENCUMBRANCES REFERRED TO

As to the land coloured blue--

THE DRAINAGE AND SEWERAGE EASEMENT reserved

by Instrument of Transfer No.A.375819 in -

the Register Book - - - - -

THE MEASUREMENTS ARE IN FEET & INCHES

PLAN 6314700X35  
AFFECTS LAND HEREIN



Vol. 3654 Fol. 750

Transfer A375819

Application

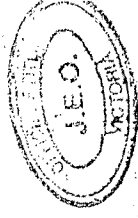
TRANSFER AS TO PART No. S 238 760 G

registered 26/11/92

CANCELLED AS TO PART

See Vol. 10108 Fol. 024

RESERVE No. 4



TRANSFER AS TO BALANCE No. S 291 568 R

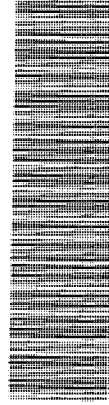
registered 4-1-93

CANCELLED See Vol. 10142 FOL. 270

Lot 3 on P3 314 700 V



**CANCELLED**



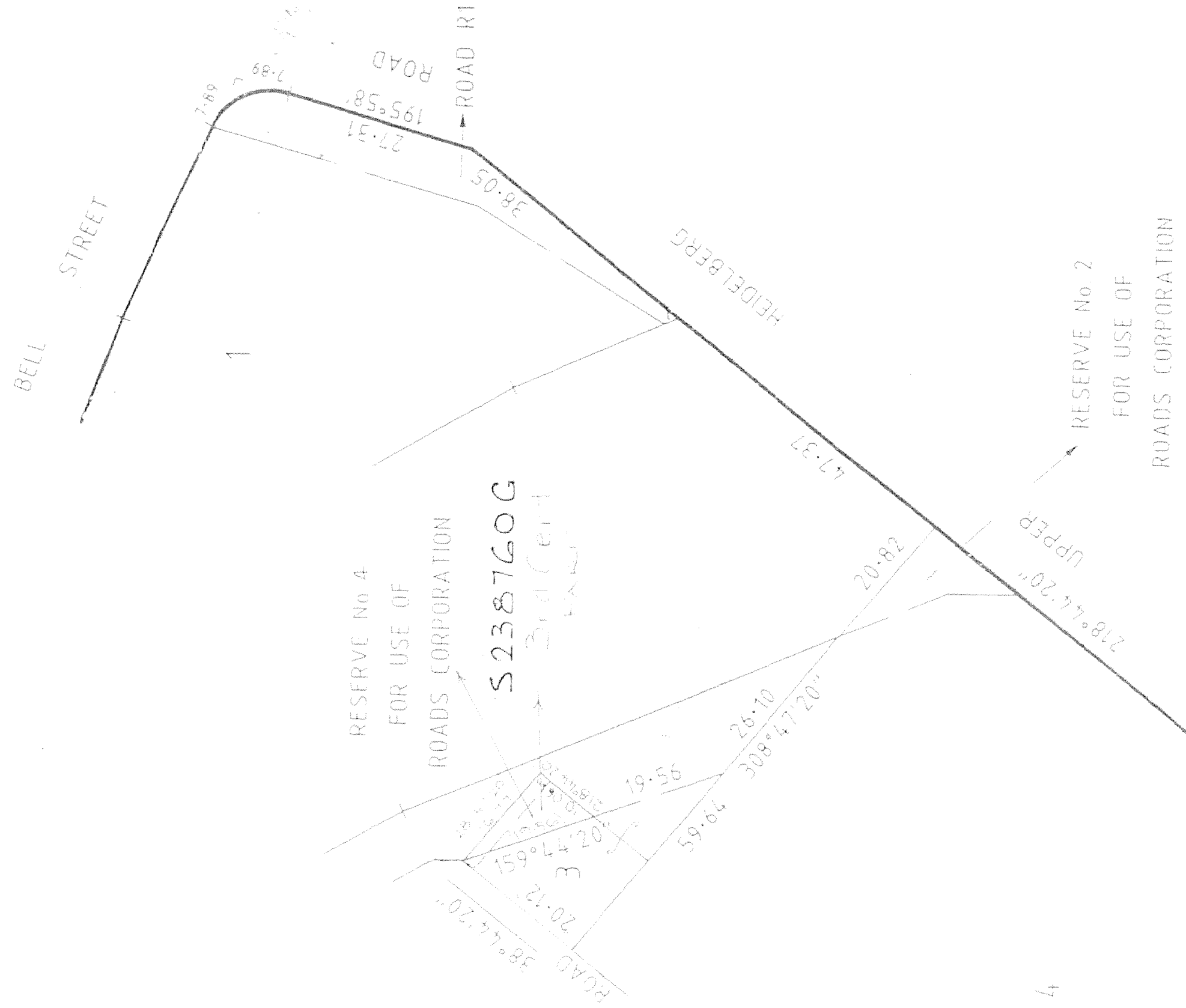
T08161-742-1-6

V8161 F 7/2

FULLY CONVERTED TITLE

THIS IS A SUPERSEDED FOLIO OF THE REGISTER. Both text and diagram for this folio have been fully converted to a computer folio.

THIS IS A SUPERSEDED FOLIO OF THE REGISTER. Both text and diagram for this folio have been fully converted to a computer folio.



**FULLY CONVERTED TITLE**

THIS IS A SUPERSEDED FOLIO OF THE REGISTER. Both text and diagram for this folio have been fully converted to a computer folio.

**1** Natural Resources and Environment  
AGRICULTURE • RESOURCES • CONSERVATION • LAND MANAGEMENT  
**INTENTIONALLY**  
**Blank** **7**

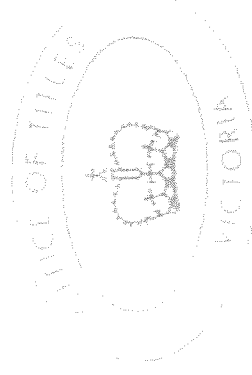




Y  
O  
O  
O  
X  
X  
X  
X  
X  
X

John

# THE UNDER THE TRANSFER OF LAND ACT



ENCUMBRANCES REFERRED TO

THE ASSURE

PLAN - 317055  
AFCO - 2100

Derived from Vol. 3654 fol. 150  
R452112

COUNTRY ROADS BOARD is now the proprietor

Registered 21st July 1980

No. J76174



**CANCELLED** *As to Part*  
PURSUANT TO SECTION 24 SUBDIVISION  
ACT 1988 AND TITLES ISSUED AS SET  
OUT HEREUNDER.

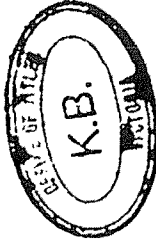
Registered 15-9-92  
No P3314700 V

Lot ONE to 2 in Vol 10076 Fol 956  
to Vol 10076 Fol 957

Reserve No. ONE In Vol 10076 Fol 958

Reserve No. 3 In Vol 10076 Fol 959

Titles not issued for Road(s) which  
are vested as shown on the Plan.

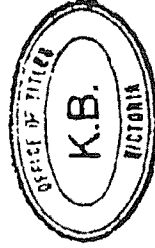


TRANSFER AS TO BALANCE No. 5291568 R

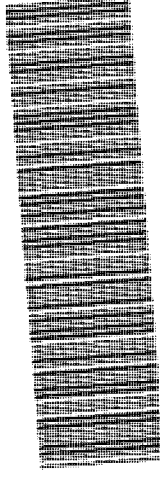
registered 4-1-93

**CANCELLED** See Vol. 10142 Fol. 270

Lot 3 on P3314700 V



**CANCELLED**



T09056-939-1-7

**Register Search Statement - Volume 10293 Folio 471**

Copyright State of Victoria. This publication is copyright.  
No part may be reproduced by any process except in accordance with the provisions of the Copyright Act and for the purposes of Section 32 of the Sale of Land Act 1962 or pursuant to a written agreement. The information is only valid at the time and in the form obtained from the LANDATA REGD TM System. The State of Victoria accepts no responsibility for any subsequent release, publication or reproduction of the information.

REGISTER SEARCH STATEMENT (Title Search) Transfer of Land Act 1958

VOLUME 10293 FOLIO 471

Security no : 124057119035V  
Produced 28/09/2015 06:12 pm

LAND DESCRIPTION

Lot 1 on Plan of Subdivision 349641N.  
PARENT TITLE Volume 10108 Folio 022  
Created by instrument PS349641N 01/08/1996

REGISTERED PROPRIETOR

Estate Fee Simple  
Sole Proprietor  
YARRA VALLEY WATER LTD  
PS349641N 01/08/1996

ENCUMBRANCES, CAVEATS AND NOTICES

Any encumbrances created by Section 98 Transfer of Land Act 1958 or Section 24 Subdivision Act 1988 and any other encumbrances shown or entered on the plan set out under DIAGRAM LOCATION below.

DIAGRAM LOCATION

SEE PS349641N FOR FURTHER DETAILS AND BOUNDARIES

ACTIVITY IN THE LAST 125 DAYS

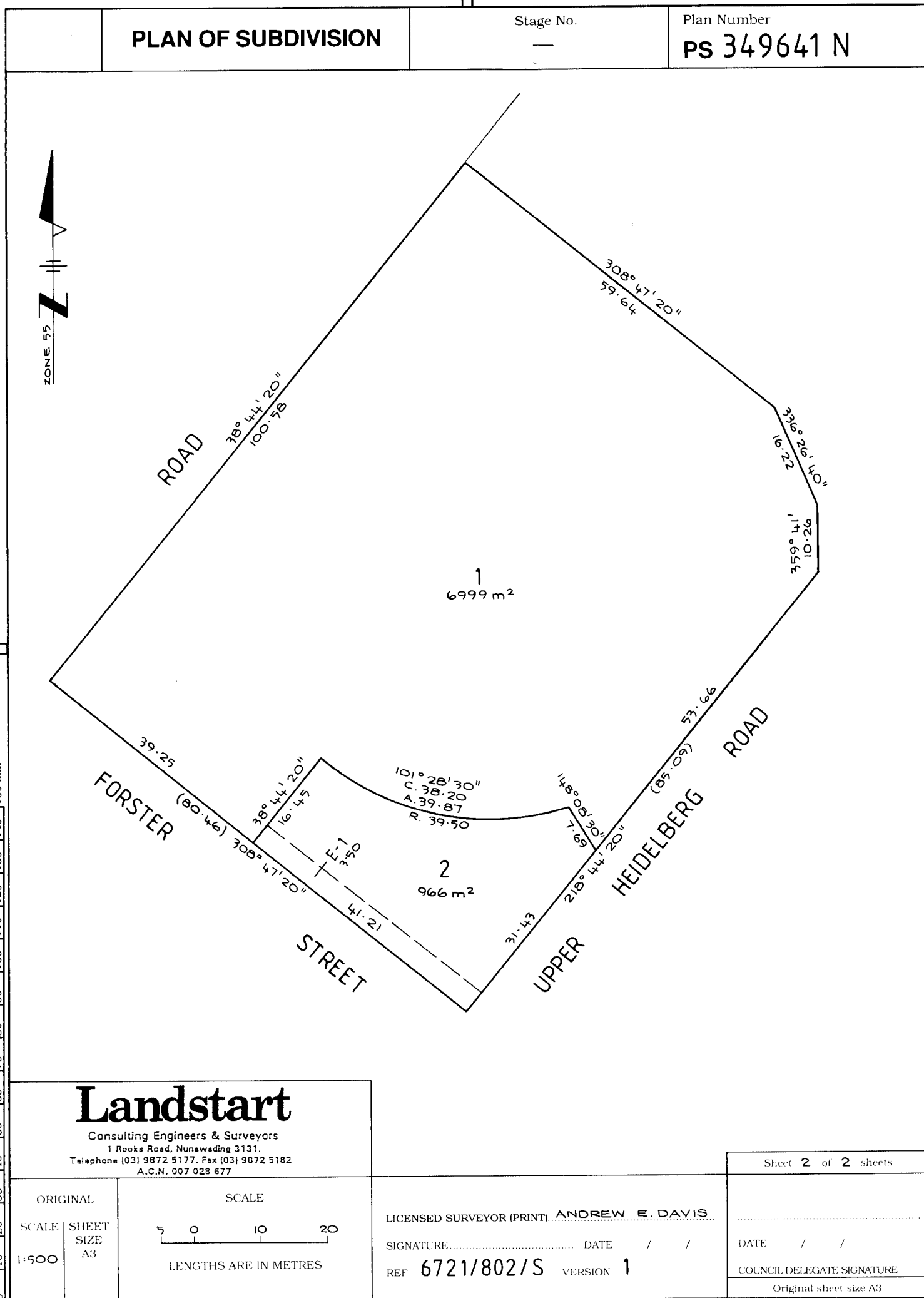
NIL

DOCUMENT END

**Delivered from the Landata ® System by SAI Global Property Division Pty Ltd  
Delivered at 28/09/2015, for Order Number 31853209. Your reference: NBD - Upp Heidelberg Rd, Ivanhoe.**



<b>PLAN OF SUBDIVISION</b>		STAGE NO. —	LTO use only <b>EDITION 1</b>	Plan Number <b>PS 349641N</b>
<b>Location of Land</b> <b>Parish:</b> KEELBUNDORA  <b>Township:</b> <b>Section:</b> <b>Crown Allotment:</b> <b>Crown Portion:</b> 3 (PART)  <b>LTO Base Record:</b> CHART 74 (2856) <b>Title Reference:</b> VOL.10108 FOL.022  <b>Last Plan Reference:</b> PS 314700 V (LOT 4) <b>Postal Address:</b> UPPER HEIDELBERG ROAD (at time of subdivision) HEIDELBERG  <b>AMG Co-ordinates</b> E 328500 Zone: 55 (of approx. centre of land in plan) N 5819250		<b>Council Certificate and Endorsement</b> Council Name: CITY OF BANYULE Ref: C42/96 1. This plan is certified under section 6 of the Subdivision Act 1988. <del>2. This plan is certified under section 11(7) of the Subdivision Act 1988.</del> <del>Date of original certification under section 6</del> / / 3. This is a statement of compliance issued under section 21 of the Subdivision Act 1988. <u>OPEN SPACE</u> (i) A requirement for public open space under section 18 of the Subdivision Act 1988 <del>has</del> /has not been made. (ii) The requirement has been satisfied. (iii) The requirement is to be satisfied in Stage..... Council delegate <del>Council seal</del> Date 22 / 5 / 96 Re-certified under section 11(7) of the Subdivision Act 1988 Council Delegate Council Seal Date / /		
<b>Vesting of Roads and/or Reserves</b>				
Identifier	Council/Body/Person			
NIL	NIL			
		<b>Notations</b>		
		<b>Staging</b> This <input checked="" type="checkbox"/> is not a staged subdivision Planning Permit No.		
		<b>Depth Limitation</b> DOES NOT APPLY		
<b>Survey</b> This plan is/ <input checked="" type="checkbox"/> based on survey This survey has been connected to permanent marks no(s) In Proclaimed Survey Area No.				
<b>Easement Information</b>				<b>LTO use only</b>
<b>Legend:</b> E - Encumbering Easement or Condition in Crown Grant in the Nature of an Easement A - Appurtenant Easement R - Encumbering Easement (Road)				Statement of Compliance/ Exemption Statement  Received <input checked="" type="checkbox"/> Date 12 / 7 / 96
Easement Reference	Purpose	Width (Metres)	Origin	Land Benefited/In Favour Of
E-1	PIPELINE	3.50	THIS PLAN	YARRA VALLEY WATER LTO
				<b>LTO use only</b> PLAN REGISTERED TIME 3.40pm DATE 1 / 8 / 96 _____ Assistant Registrar of Titles
				Sheet 1 of 3 Sheets
<b>Landstart</b> Consulting Engineers & Surveyors 1 Rooks Road, Nunawading 3131. Telephone (03) 9872 5177. Fax (03) 9872 5182 A.C.N. 007 028 677		LICENSED SURVEYOR (PRINT) ANDREW E. DAVIS SIGNATURE..... DATE 27 / 3 / 96 REF 6721/801/S VERSION 1		DATE / / COUNCIL DELEGATE SIGNATURE Original sheet size A3



# Landstart

Consulting Engineers & Surveyors  
1 Rooks Road, Nunawading 3131.  
Telephone (03) 9872 5177, Fax (03) 9872 5182  
A.C.N. 007 028 677

ORIGINAL

SCALE

SCALE  
1:500  
SHEET  
SIZE  
A3

5 0 10 20

LENGTHS ARE IN METRES

LICENSED SURVEYOR (PRINT) **ANDREW E. DAVIS**

SIGNATURE..... DATE / /

REF **6721/802/S** VERSION **1**

Sheet **2** of **2** sheets

DATE / /

COUNCIL DELEGATE SIGNATURE

Original sheet size A3

# PLAN OF SUBDIVISION

Stage No.

—

Plan Number

PS 349641N

## SUBDIVISION ACT 1988 CREATION OF RESTRICTION

ON REGISTRATION OF THIS PLAN THE FOLLOWING RESTRICTION IS CREATED:

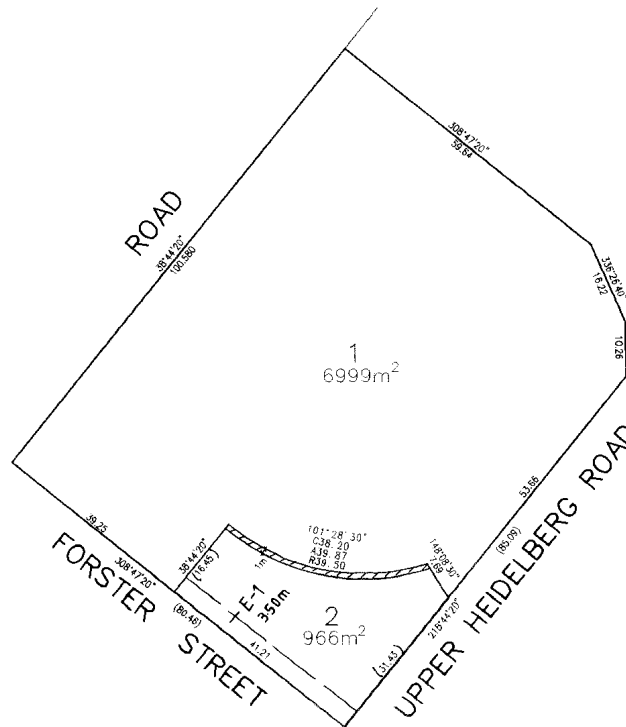
LAND TO BENEFIT: LOT 1

LAND TO BE BURDENED: LOT 2

DESCRIPTION OF RESTRICTION: THE REGISTERED PROPRIETOR OR PROPRIETORS  
FOR THE TIME BEING OF LOT 2 ON THIS PLAN OF SUBDIVISION SHALL NOT:

1. CONTRUCT ANY STRUCTURE WITHIN, EXCAVATE OR DISTURB THE AREA HATCHED  
IN THE SCHEDULE

### SCHEDULE



# Landstart

Certified to ISO 9001 DLQ NO. 2054  
Consulting Engineers & Land Surveyors  
1 Rooks Road, Nunawading 3131  
Telephone (03) 9 872 5177, Fax (03) 9 872 5182  
A.C.N 007 028 677

Sheet 3 of 3 Sheets

ORIGINAL

SCALE  
SHEET  
SIZE  
A3

SCALE

10 0 20 40

LENGTHS ARE IN METRES

LICENSED SURVEYOR (PRINT) ANDREW E. DAVIS

SIGNATURE DATE / /

REF 6721/803/S VERSION 1

DATE / /

COUNCIL DELEGATE SIGNATURE

Original sheet size A3



**Register Search Statement - Volume 10142 Folio 270**

Copyright State of Victoria. This publication is copyright.  
No part may be reproduced by any process except in accordance with  
the provisions of the Copyright Act and for the purposes of Section  
32 of the Sale of Land Act 1962 or pursuant to a written agreement.  
The information is only valid at the time and in the form obtained  
from the LANDATA REGD TM System. The State of Victoria accepts no  
responsibility for any subsequent release, publication or reproduction  
of the information.

REGISTER SEARCH STATEMENT (Title Search) Transfer of Land Act 1958

-----  
VOLUME 10142 FOLIO 270

Security no : 124057119036U  
Produced 28/09/2015 06:12 pm

LAND DESCRIPTION  
-----

Lot 3 on Plan of Subdivision 314700V.

PARENT TITLES :

Volume 08161 Folio 742          Volume 09056 Folio 439

Created by instrument S291568R 04/01/1993

REGISTERED PROPRIETOR  
-----

Estate Fee Simple

Sole Proprietor

YARRA VALLEY WATER LTD of LUCKNOW STREET MITCHAM VIC 3132  
S291568R 04/01/1993

ENCUMBRANCES, CAVEATS AND NOTICES  
-----

Any encumbrances created by Section 98 Transfer of Land Act 1958 or Section  
24 Subdivision Act 1988 and any other encumbrances shown or entered on the  
plan set out under DIAGRAM LOCATION below.

DIAGRAM LOCATION  
-----

SEE PS314700V FOR FURTHER DETAILS AND BOUNDARIES

ACTIVITY IN THE LAST 125 DAYS  
-----

NIL

DOCUMENT END

**Delivered from the Landata ® System by SAI Global Property Division Pty Ltd**  
**Delivered at 28/09/2015, for Order Number 31853209. Your reference: NBD - Upp Heidelberg Rd, Ivanhoe.**

Lodged at the Titles Office by

**MALLESON'S STEPHEN JAKES**

Code **1177 B**

**VICTORIA**

Subject to the encumbrances affecting the land including any created by dealings lodged for registration prior to the lodging of this instrument the transferor for the consideration expressed transfers to the transferee all his estate and interest in the fee simple in the land described. (Notes 1-4)

Titles Office Use Only



040193 0919 45 11 S291568R

903/939

MADE AVAILABLE

TO ISSUE TO

*Roads Corp.*

*MADE AVAILABLE  
TO ISSUE TO  
Melbourne Street Jakes*

**NEW TITLE**

**TRANSFER OF LAND**

*to Mallesons.*

Land (Note 5)

Lot 3 on Plan of Subdivision No. PS314700V being part of the land described in Certificate of Title Volume 8161 Folio 742 and part of the land described in Certificate of Title Volume 9056 Folio 939

Consideration (Note 6)

\$11,000.00

Transferor (Note 7)

MELBOURNE WATER CORPORATION (formerly Melbourne and Metropolitan Board of Works) and  
ROADS CORPORATION (formerly Country Roads Board)

Transferee (Note 8)

MELBOURNE WATER CORPORATION of 625 Little Collins Street, Melbourne

Date **30 October 1992**

Execution & Attestation

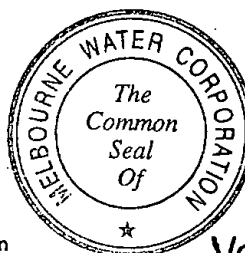
THE COMMON SEAL of the MELBOURNE  
WATER CORPORATION on being affixed  
hereto was attested by:

Chairperson

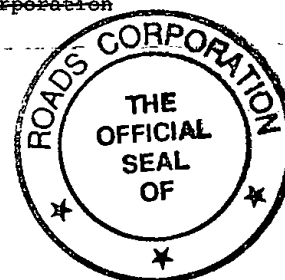
Secretary to the Board  
Corporation

THE COMMON SEAL of ROADS CORPORATION  
was hereunto affixed in the presence  
of:

Authorised Officers



Vol. 10142 Fol. 270



Comptroller of Stamps Use Only

**T1**

Office Use Only



CT V 8161 F 742

(801)

AND

CT V 9056 F. 939

(801)

ANA: 337m2

NO DIAGRAM (x35)

T6 15/11/93

Trn 060252955 RDC 52  
Rdn 100512 Amt \$  
Stamp Duty, Victoria  
42795193809629

23/12/92  
154.00

Approval No. T1/1

I certify that the Chief Executive Officer of the Roads Corporation by virtue of the delegation to him under Section 32 of the Transport Act 1983 of the Minister's power contained in Section 47 of the said Act has approved the sale and transfer of the within described land.

*David R. Newman*

MANAGER PROPERTY OPERATIONS  
ROADS CORPORATION

I JOHN MAURICE DAVIES of 30 Collins Street Melbourne in the State of Victoria solicitor do hereby certify as follows:-

1. THAT I am a member of the firm of Messrs E.P. Johnson & Davies of 30 Collins Street Melbourne the solicitors acting on behalf of Roads Corporation in respect of the acquisition of the land described in the within transfer.
2. THAT the consent of the Minister for Transport for the State of Victoria with regard to the acquisition of the abovementioned piece of land was granted on the 20th day of December, 1988 pursuant to Section 42(1) of the Transport Act 1983.

Dated the \_\_\_\_\_ day of \_\_\_\_\_ 1992.

.....  
J.M. DAVIES

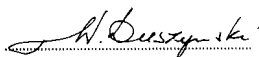
*To: The Registrar of Titles  
Please register the within Transfer and on completion  
issue Transferee's Title to lodging party and return  
Transferor's Title to Roads Corporation (26E)*

NOTES

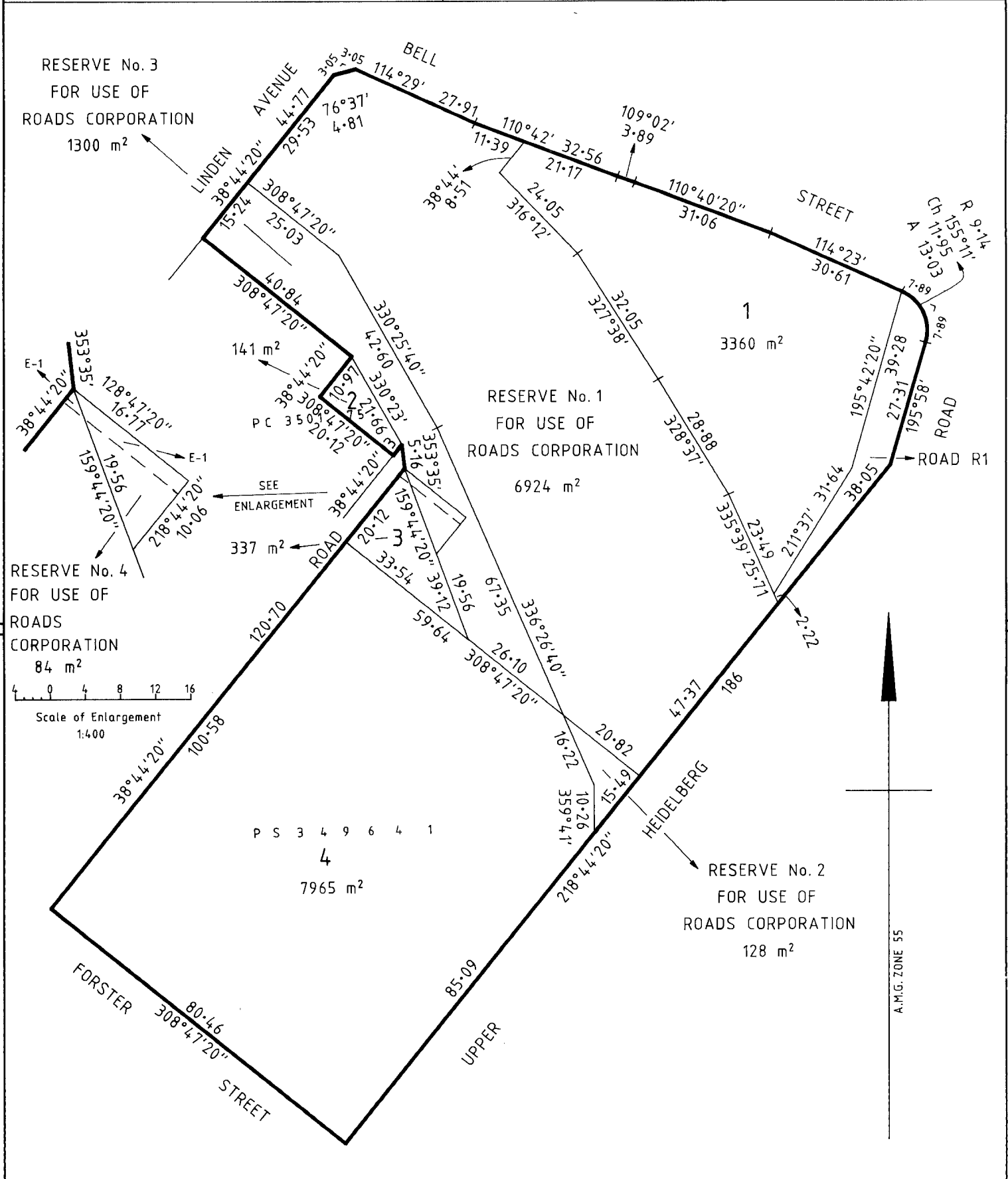
*DEED CLERK  
Hamilton*

1. This form must be used for all transfers by the registered proprietor of an estate in fee simple other than
  - (a) transfers by direction
  - (b) transfers creating or reserving easements
  - (c) transfers containing a restrictive covenant or a covenant created pursuant to statute
  - (d) transfers of mortgages charges or leases or leasehold estates
  - (e) transfers of other than the full interest of the transferor for which the appropriate form must be used.
2. Transfers may be lodged as an original only and must be typed or completed in ink.
3. All signatures must be in ink.
4. If there is insufficient space in any panel to accommodate the required information use the above space or an annexure sheet (Form A1). Insert only the words "See Annexure A" (or as the case may be) in the appropriate panel and enter the information above or on the annexure sheet under the appropriate heading.  
Multiple annexures may appear on the same annexure sheet but each must be correctly headed.  
All annexure sheets should be properly identified and signed by the parties and securely attached to the instrument.
5. Volume and folio references must be given. If the whole of the land in a title is to be transferred no other description should be used. If the transfer affects part only of the land in a title the lot and plan number or Crown description should also be given. Any necessary diagram should be endorsed above or on an annexure sheet (Form A1).
6. Set out the amount (in figures) on the nature of the consideration.  
In a transfer on sale of land subject to a mortgage it should be clearly shown whether or not the amount owing under the mortgage is included in the consideration e.g. \$ ..... which includes the amount owing under mortgage No. ....
7. Insert full name. Address is not required.
8. Insert full name and address. If two or more transferees state whether as joint tenants or tenants in common. If tenants in common specify shares.
9. If an executing party is a natural person execution should read "Signed by the transferor (transferee) in the presence of .....". The witness must be an independent person. If an executing party is a body corporate execution should conform to any prescribed formalities relating to the affixing of the common seal.



PLAN OF SUBDIVISION		STAGE NO.	LTO use only	Plan Number																		
Under Section 35 of the Subdivision Act 1988			EDITION 4	PS 314700V																		
<b>Location of Land</b> <b>Parish:</b> KEELBUNDORA <b>Crown Portion:</b> 3 (PART) <b>LTO Base Record:</b> CHART 74 (2856) <b>Title Reference:</b> Discontinued Road vested in the Roads Corporation - part C/T Vol 1667 Fol 262 C/T Vol 3428 Fol 408 C/T Vol 4688 Fol 553 C/T Vol 8161 Fol 742 C/T Vol 8606 Fol 786 C/T Vol 8621 Fol 931 C/T Vol 8621 Fol 932 C/T Vol 8621 Fol 933 C/T Vol 8621 Fol 934 C/T Vol 8621 Fol 935 C/T Vol 8621 Fol 936 C/T Vol 8621 Fol 937 C/T Vol 8646 Fol 569 C/T Vol 8858 Fol 737 C/T Vol 8879 Fol 825 C/T Vol 9056 Fol 939 C/T Vol 9627 Fol 526 C/T Vol 9654 Fol 773 C/T Vol 9896 Fol 542 C/T Vol 9896 Fol 543 C/T Vol 9945 Fol 532 C/T Vol 9945 Fol 533 C/T Vol 9945 Fol 534 C/T Vol 9996 Fol 446 C/T Vol 9996 Fol 447 C/T Vol 9999 Fol 902 C/T Vol 9999 Fol 903 C/T Vol 9999 Fol 904 <b>Last Plan Reference:</b> LP 5824 Lots 61 (PART),62(PART),63(PART), 64(PART),91,92,93,94,95 and 96(PART),LP 70845 <b>Postal Address:</b> BELL STREET (at time of subdivision) (FROM LINDEN AVENUE TO UPPER HEIDELBERG ROAD.) HEIDELBERG WEST 3081 <b>AMG Co-ordinates</b> E 328600 ZONE: 55 (of approx. centre of N 5819300 land in plan)		<b>Council Certificate and Endorsement</b> <b>Council Name:</b> City of Heidelberg <b>Ref:</b> 7178 A. This is a plan under section 35 of the Subdivision Act 1988 which does not create any additional lots. B. This plan is exempt from Part 3 of the Subdivision Act 1988. <del>C. This is a plan under section 35 of the Subdivision Act 1988 which creates (an) additional lot(s).</del> D. It is certified under section 6 of the Subdivision Act 1988. <del>E. It is certified under section 11(7) of the Subdivision Act 1988.</del> <del>F. Date of original certification under section 6. / /</del> <del>G. This is a statement of compliance under section 21 of the Subdivision Act 1988.</del>  Council Delegate Council Seal  Date 6 / 3 / 92  Re-certified under section 11(7) of the Subdivision Act 1988.  Council Delegate Council Seal  Date / /																				
<b>Vesting of Roads and / or Reserves</b> Roads and reserves vest in the council/body/person named when the appropriate vesting date is recorded or transfer registered. Only roads and reserves marked thus (%) vest upon registration of this plan.		<b>Notations</b>																				
<table border="1"><thead><tr><th>Identifier</th><th>Council/Body/Person</th></tr></thead><tbody><tr><td>%ROAD R1</td><td>ROADS CORPORATION</td></tr><tr><td>%RESERVE No. 1</td><td>ROADS CORPORATION</td></tr><tr><td>RESERVE No. 2</td><td>ROADS CORPORATION</td></tr><tr><td>%RESERVE No. 3</td><td>ROADS CORPORATION</td></tr><tr><td>RESERVE No. 4</td><td>ROADS CORPORATION</td></tr></tbody></table>		Identifier	Council/Body/Person	%ROAD R1	ROADS CORPORATION	%RESERVE No. 1	ROADS CORPORATION	RESERVE No. 2	ROADS CORPORATION	%RESERVE No. 3	ROADS CORPORATION	RESERVE No. 4	ROADS CORPORATION	<b>Staging</b> This is not a staged subdivision Planning Permit No. NOT APPLICABLE  <b>Depth Limitation</b> NIL <b>Land to be acquired by compulsory process:</b> NIL <b>Land to be acquired by agreement:</b> RESERVE No. 2 & RESERVE No. 4  ○ All the land is to be acquired free from all encumbrances other than any easements specified on this plan. ○ The drainage and sewerage easement appropriated on LP 70845 will merge upon registration of this plan. ○ The drainage and sewerage easement created by Transfer 1836483 and shown on C/T's Vol 9654 Fol 773 and Vol 9999 Fol 902 will merge upon registration of this plan. ○ The land being subdivided is enclosed within thick continuous lines.								
Identifier	Council/Body/Person																					
%ROAD R1	ROADS CORPORATION																					
%RESERVE No. 1	ROADS CORPORATION																					
RESERVE No. 2	ROADS CORPORATION																					
%RESERVE No. 3	ROADS CORPORATION																					
RESERVE No. 4	ROADS CORPORATION																					
<b>Easement Information</b> <b>Legend:</b> A - Appurtenant Easement E - Encumbering Easement R - Encumbering Easement (Road) Easements marked (-) are existing easements. Easements marked (+) are created upon registration of this plan. Easements marked (*) are created when the appropriate vesting date is recorded or transfer registered. Easements marked (#) are removed when the appropriate vesting date is recorded or transfer registered.		<b>Survey</b> This plan is based on survey. This survey has been connected to permanent marks no(s). 450 & 451 in Proclaimed Survey Area No. _____																				
<table border="1"><thead><tr><th>Symbol</th><th>Easement Reference</th><th>Purpose</th><th>Width (Metres)</th><th>Origin</th><th>Land Benefited/In Favour Of</th></tr></thead><tbody><tr><td>+</td><td>R1</td><td>Way and Drainage</td><td>See Diag</td><td>This Plan</td><td>Land in this plan</td></tr><tr><td>-</td><td>E-1</td><td>Drainage and Sewerage</td><td>1.83</td><td>Transfer A375819</td><td>Melbourne and Metropolitan Board of Works</td></tr></tbody></table>		Symbol	Easement Reference	Purpose	Width (Metres)	Origin	Land Benefited/In Favour Of	+	R1	Way and Drainage	See Diag	This Plan	Land in this plan	-	E-1	Drainage and Sewerage	1.83	Transfer A375819	Melbourne and Metropolitan Board of Works	<b>LTO use only</b>  Statement of Compliance/ Exemption Statement  Received <input checked="" type="checkbox"/>  Date 16 / 4 / 92  <b>LTO use only</b> PLAN REGISTERED Time Date 15 / 9 / 92  Assistant Registrar of Titles Sheet 1 of 3 Sheets		
Symbol	Easement Reference	Purpose	Width (Metres)	Origin	Land Benefited/In Favour Of																	
+	R1	Way and Drainage	See Diag	This Plan	Land in this plan																	
-	E-1	Drainage and Sewerage	1.83	Transfer A375819	Melbourne and Metropolitan Board of Works																	
<b>ROADS CORPORATION</b> Land Information and Survey Department. 60 Denmark Street Kew 3101. (M. B. Rennick) Telephone: 860 2081 Fax 862 3537		LICENSED SURVEYOR MARK B. RENNICK (PRINT)  SIGNATURE _____ DATE / / SR9152 REF. SP17506E PS1 VERSION _____			  DATE / /  COUNCIL DELEGATE SIGNATURE Original sheet size A3																	

<b>PLAN OF SUBDIVISION</b> Under Section 35 of the Subdivision Act 1988.	<b>Stage No.</b> _____	<b>Plan Number</b> PS 314700V
---	---------------------------	----------------------------------



<b>ORIGINAL</b>		<b>SCALE</b>		<b>LICENSED SURVEYOR</b> MARK B. RENNICK		<b>Sheet 2 of 3 Sheets</b>	
<b>SCALE</b> 1:750	<b>SHEET SIZE</b> A3			<b>(PRINT)</b>		<b>DATE</b> / /	
		<b>LENGTHS ARE IN METRES</b>		<b>SIGNATURE</b> _____		<b>COUNCIL DELEGATE SIGNATURE</b> _____	
				<b>DATE</b> / /		<b>Original sheet size A3</b>	
				<b>REF.</b> SP17506E PS1		<b>VERSION</b> _____	

# PLAN OF SUBDIVISION



Under Section 35 of the Subdivision Act 1988

Stage No.

Plan Number

PS 314700V

## VESTING DATES & TRANSFER REGISTRATION DATES OF ACQUIRED LAND

Land affected	Land acquired by compulsory process prior to certification			Land acquired by compulsory process after registration of plan			Land acquired by agreement	LTO reference of transfers or notifications of vesting dates	Assistant Registrar of Titles Signature
	Vesting date	Gov't. Gaz. Page	Year	Date of recording of vesting date	Vesting date	Gov't. Gaz. Page	Date of registration of transfer		
RESERVE NO 2	---	---	---	---	---	---	26-11-92	S238760G	
RESERVE NO 4	---	---	---	---	---	---	26-11-92	S238760G	

Sheet 3 of 3 Sheets

LICENSED SURVEYOR ..... MARK B. RENNICK  
(PRINT)

SIGNATURE ..... SR9152

DATE / /

REF. SP17506E PS1

VERSION \_\_\_\_\_

DATE / /

COUNCIL DELEGATE SIGNATURE

Original sheet size A4



PS 314700V

**MODIFICATION TABLE**  
**RECORD OF ALL ADDITIONS OR CHANGES**  
**TO THE PLAN**

[illegible]

## **Appendix D - Aerial Photographs**





1951



507  
E211  
70

2134  
VIC  
X



1968

187  
X

X







Qascope  
CHECKPRINT

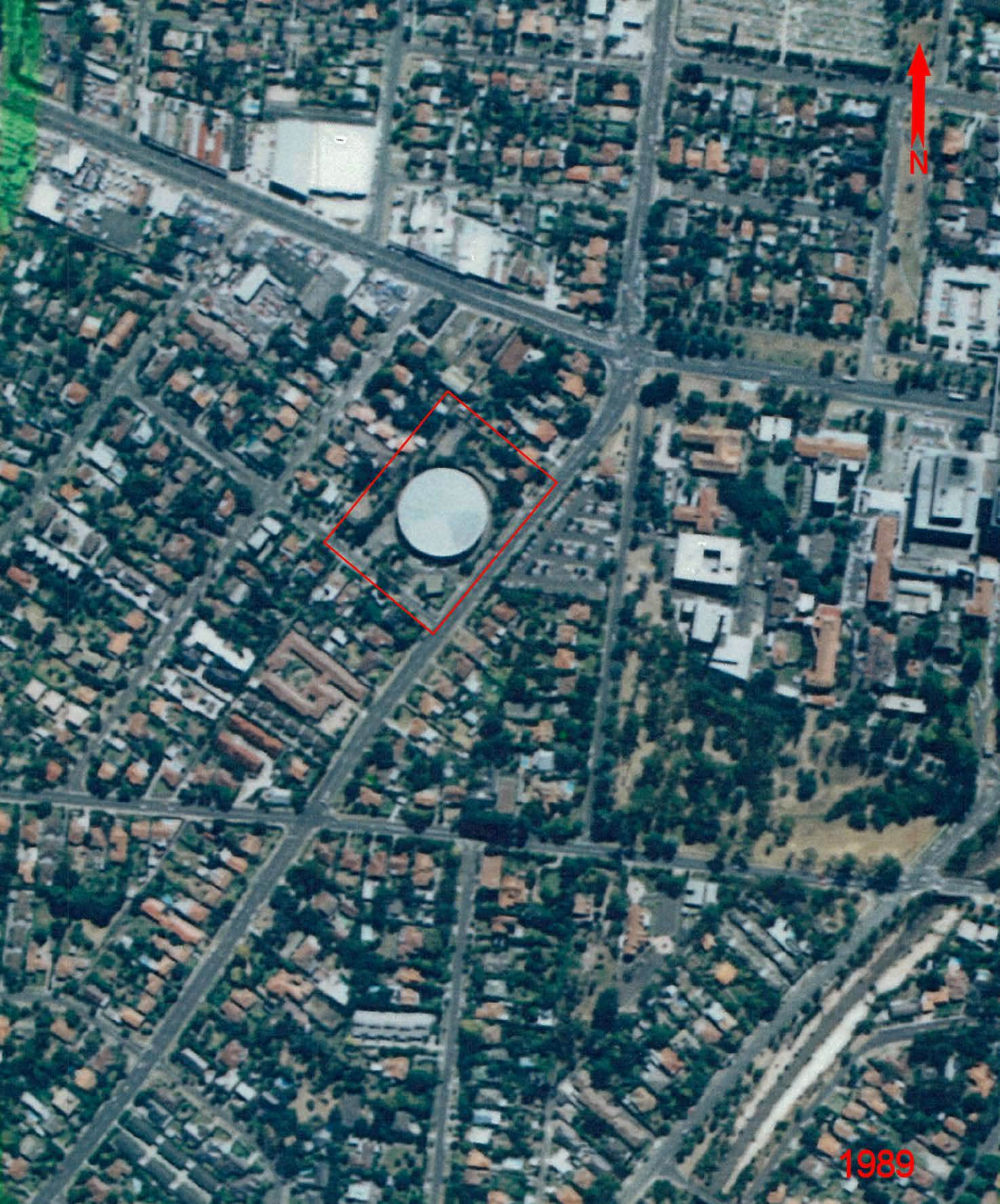
20-4-78  
5250' ASL

RUN 1  
194-219

RINGWOOD  
7922-3-78

DEPARTMENT OF CROWN  
LANDS AND SURVEY,  
VICTORIA ©





N

1989