



7.1 Strategic Directions



**Direction 1:**  
**Pedestrian Activity**

Support walking as the primary means of access and movement within the Precinct and encourage pedestrian activity in public spaces.



**Direction 2:**  
**Streetscapes**

Provide pedestrian-friendly streetscapes that are dynamic, support street life and are places for social interaction and recreation.



**Direction 3: Green**  
**and Open Spaces**

Improve open spaces to provide diverse opportunities for passive and active recreation, social and community activities, visual relief, wildlife habitat, stormwater management, and to enhance the strong visual links with the Yarra Valley.



**Direction 4:**  
**Active and Public**  
**Transport**

Seamlessly integrate the public realm with public transport and cycling infrastructure.



**Direction 05:**  
**Sustainability**

Protect and conserve the natural environment while promoting sustainability within the public realm.



**Direction 06:**  
**Governance and**  
**Management**

Promote and embed the management and execution of this Strategy within Planning and Design Policy across Banyule.

7.2 Direction 01: Pedestrian Activity

Initiative 1.1

Strengthen connectivity within the Precinct and with surrounding areas by providing a legible, safe and convenient network of walking, cycling and recreational routes.

- **Action 1.1.1** – Implement walking routes to connect major activity hubs, destinations and open spaces, increasing the enjoyment of alternative modes of transport such as walking, cycling and jogging.
- **Action 1.1.2** – Capitalise on the existing topography by implementing recreational routes to link major open spaces such as Heidelberg Park, Service Reserve, Heidelberg Bowling Club, Powlett Street Reserve, James Reserve, Melbourne Water Reserve and Remembrance Park.
- **Action 1.1.3** – Enhance the connectivity and legibility of recreational trails, particularly in and around high density precincts.
- **Action 1.1.4** – Enhance and protect existing green corridors, and where possible create new ones, to develop a network of walking trails, cycle paths and open spaces.

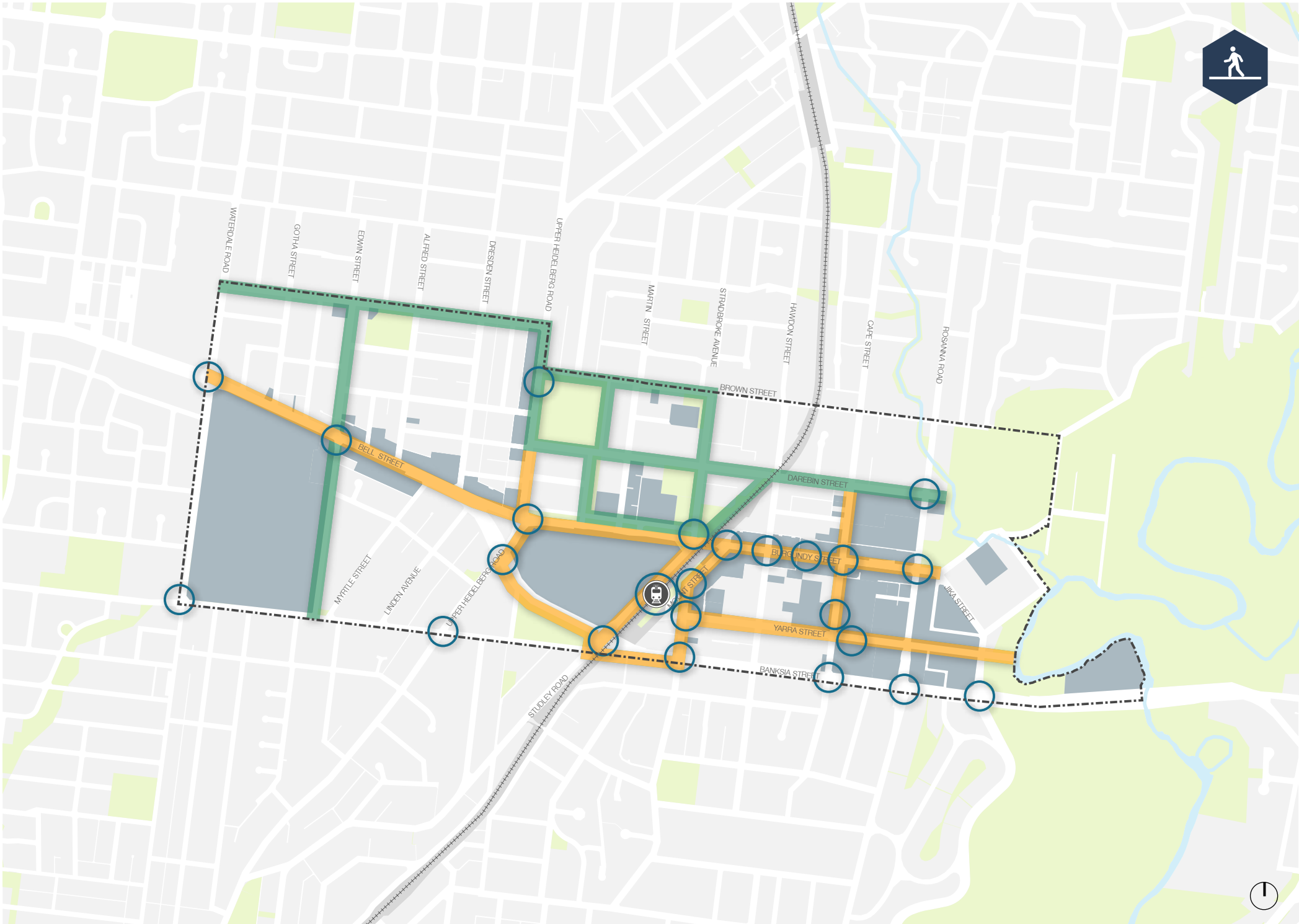
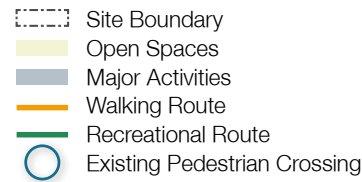


Figure 68: Pedestrian Activity - Initiative 1.1 Map

Initiative 1.2

Enhance Burgundy, Bell, Mount and Cape Streets and Upper Heidelberg Road as pedestrian activity corridors connecting all areas of the Precinct.

- Action 1.2.1 – Improve pedestrian facilities in all streets to exceed the established standard on Burgundy Street between Cape and Hawdon Streets.
- Action 1.2.2 – Dramatically improve the amenity of Burgundy and Bell Streets to the west of the railway corridor as a pedestrian environment and as a link between the two activity centres.
- Action 1.2.3 – Create distinct and legible walking routes with a consistent material and street furniture pallet to respond to street characters as follows:
  - Burgundy and Mount Streets – Activity centre, fine-grain retail, village feel.
  - Bell Street and Upper Heidelberg Road – Activity centre, medical precinct.
  - Cape Street – Civic and education precinct.

- Site Boundary
- Open Spaces
- Fine-Grain Retail
- Character 1: Activity Centre/Village
- Character 2: Activity Centre/Medical
- Character 3: Civic/Education
- Highest Pedestrian Priority
- Pedestrian Priority

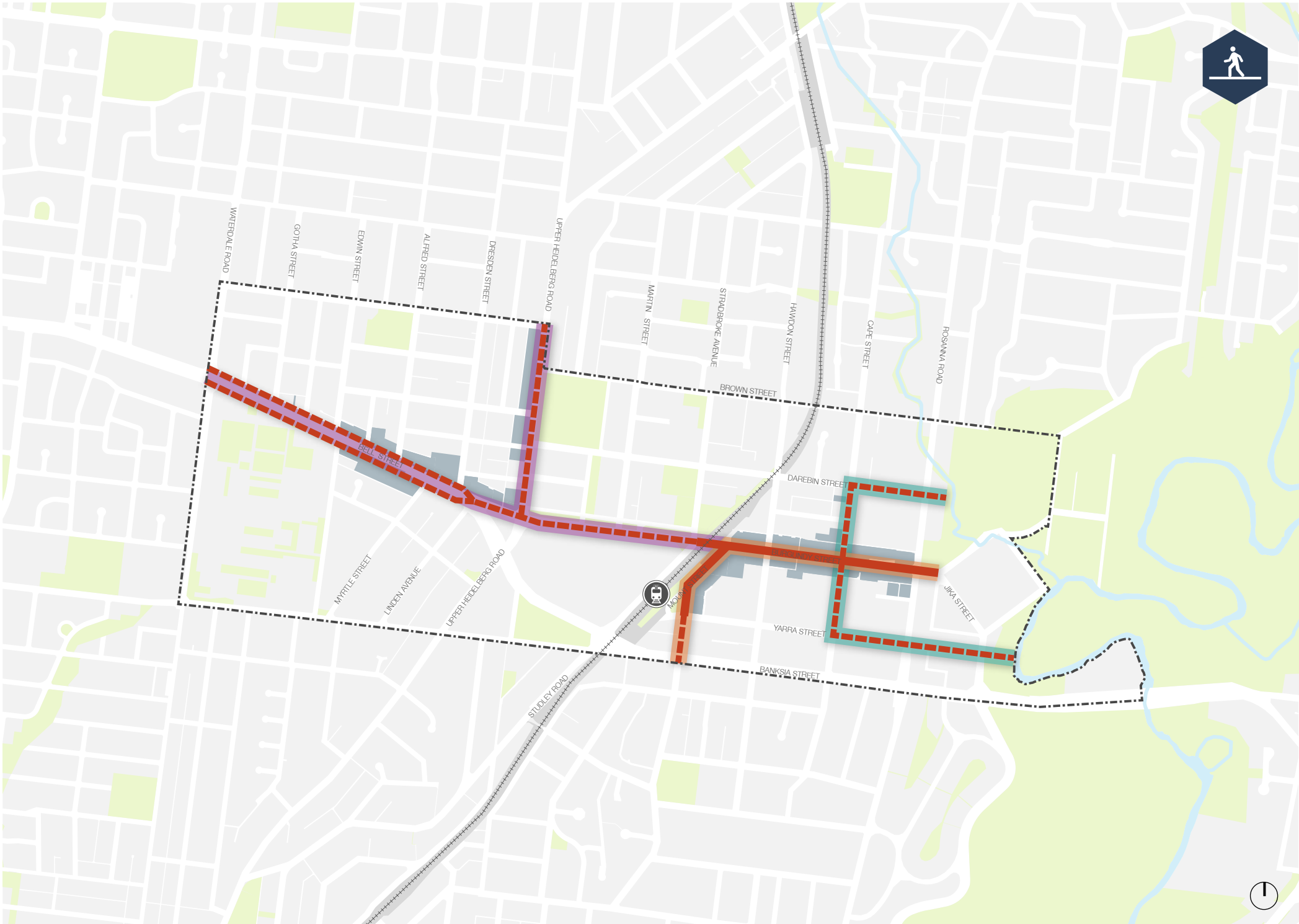


Figure 69: Pedestrian Activity - Initiative 1.2 Map

Initiative 1.3

Increase permeability in the high-density redevelopment area between the railway corridor and Rosanna Road.

- Action 1.3.1 – Improve laneways and pedestrian links as a fine grain of inter-connecting routes, especially under the Heidelberg Station and along Burgundy Street.
- Action 1.3.2 - Encourage the creation of new mid-block pedestrian routes to extend the existing laneway network, especially on Council owned land between Cape and Hawdon Streets.
- Action 1.3.3 – Implement actions of the Heidelberg Car Park Sites: Concept Plans & Feasibility Study (2010) within Council-owned properties.

- Site Boundary
- Open Spaces
- High-Density Area
- Improved Laneway
- Potential New Laneway
- Council-Owned Property

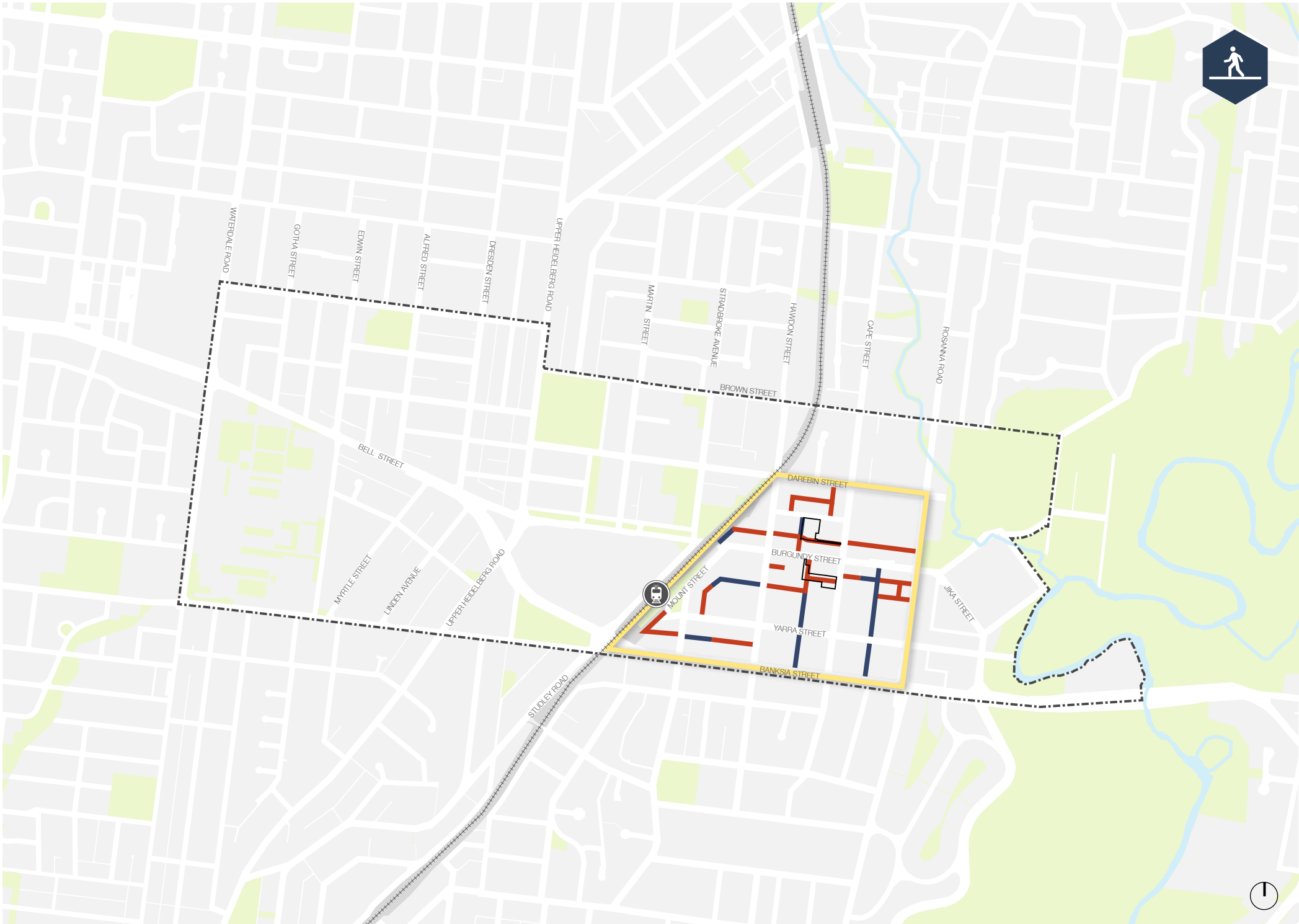


Figure 70: Pedestrian Activity - Initiative 1.3 Map



Initiative 1.4

Provide for safe, convenient and pleasurable pedestrian access in all streets and intersections.

- Action 1.4.1 – Ensure any traffic management changes take a pedestrian-oriented approach, which considers a streetscape development plan that encourages walkability.
- Action 1.4.2 – Develop streetscape plans for priority streets informed by the Urban Forest Precinct Masterplan.
- Action 1.4.3 – Undertake lighting audits and ensure appropriate lighting is considered for different environments when planning and designing streetscapes, parks, laneways and thoroughfares and public/private interface spaces.
- Action 1.4.4 – Liaise with VicRoads and key stakeholders to prioritise pedestrian access and safety in public roads not managed by Council.

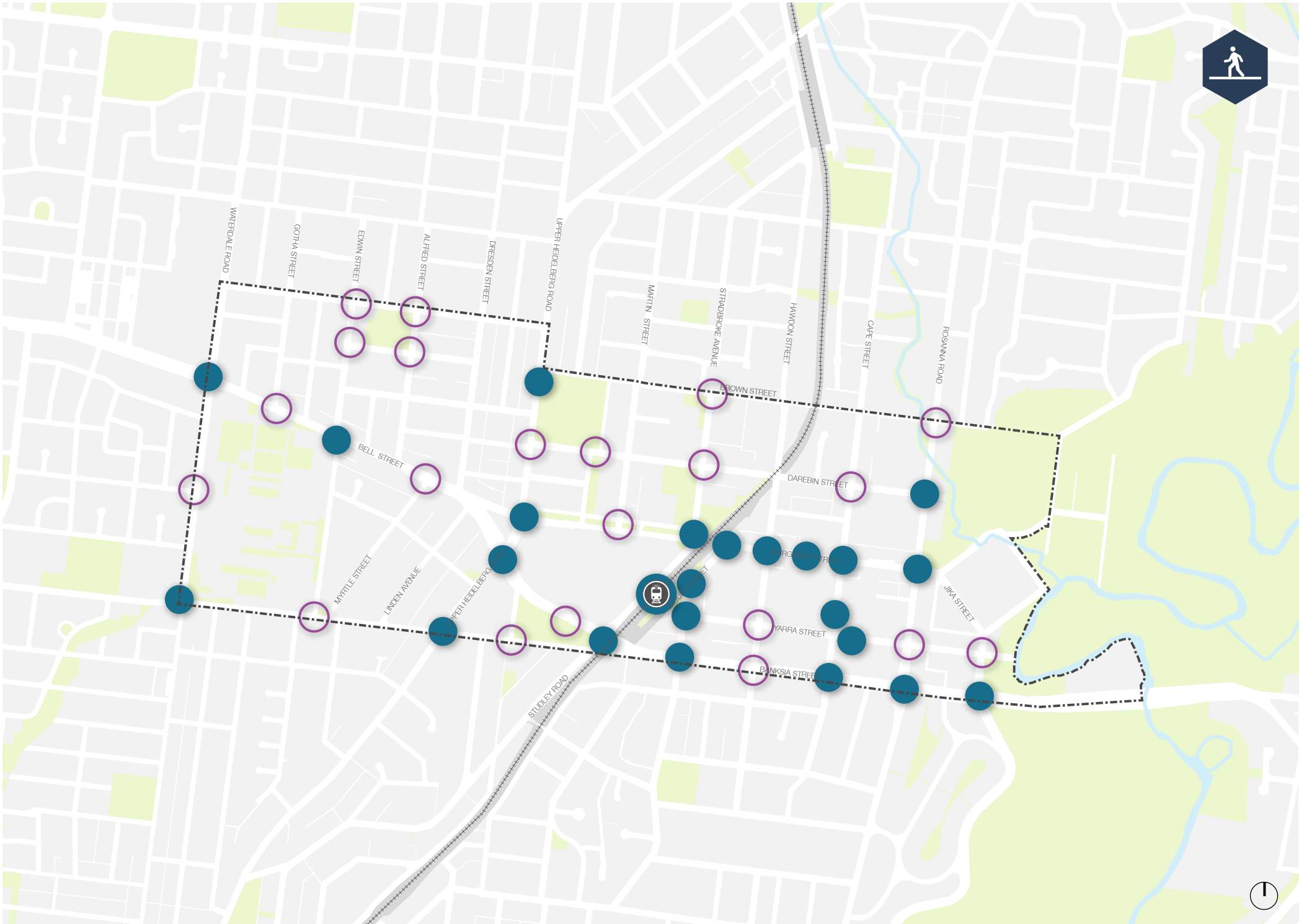
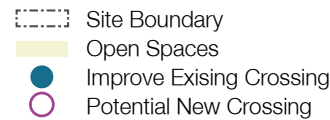


Figure 71: Pedestrian Activity - Initiative 1.4 Map

### 7.3 Direction 02: Streetscapes

#### Initiative 2.1

Strengthen the legibility, character and identity of the Precinct by protecting and enhancing key views and vistas to the broader landscape, local landmark features and gateways.

- **Action 2.1.1** – Ensure that new built form does not obstruct view lines to key landmarks and open spaces.
- **Action 2.1.2** – Develop built form guidelines for the Precinct to protect vistas and connections to the broader landscape through the implementation of adequate building setbacks and public/private interfaces.
- **Action 2.1.3** – Develop an urban forest strategy for the Precinct to encourage street tree planting that enhances the local character while protecting vistas and connections to the broader landscape.
- **Action 2.1.4** – Reinforce Heidelberg Station, the railway bridge, Heidelberg Gardens and the intersection of Upper Heidelberg Road and Burgundy Street as primary gateways into the Precinct.
- **Action 2.1.5** – Reinforce existing natural, cultural and civic landscapes such as Burgundy Street, Heidelberg Park, Heidelberg Station precinct, St John's Parish and the Old England Hotel and ensure that they contribute to a distinctive sense of place.
- **Action 2.1.6** – Implement a clear wayfinding strategy, including easy to read signage at pedestrian eye level with a coordinated suite of materials.

- Site Boundary
- Gateway/Lookout Open Spaces
- Cultural and Civic Landmark
- Gateway
- Key View Line
- Key Vista

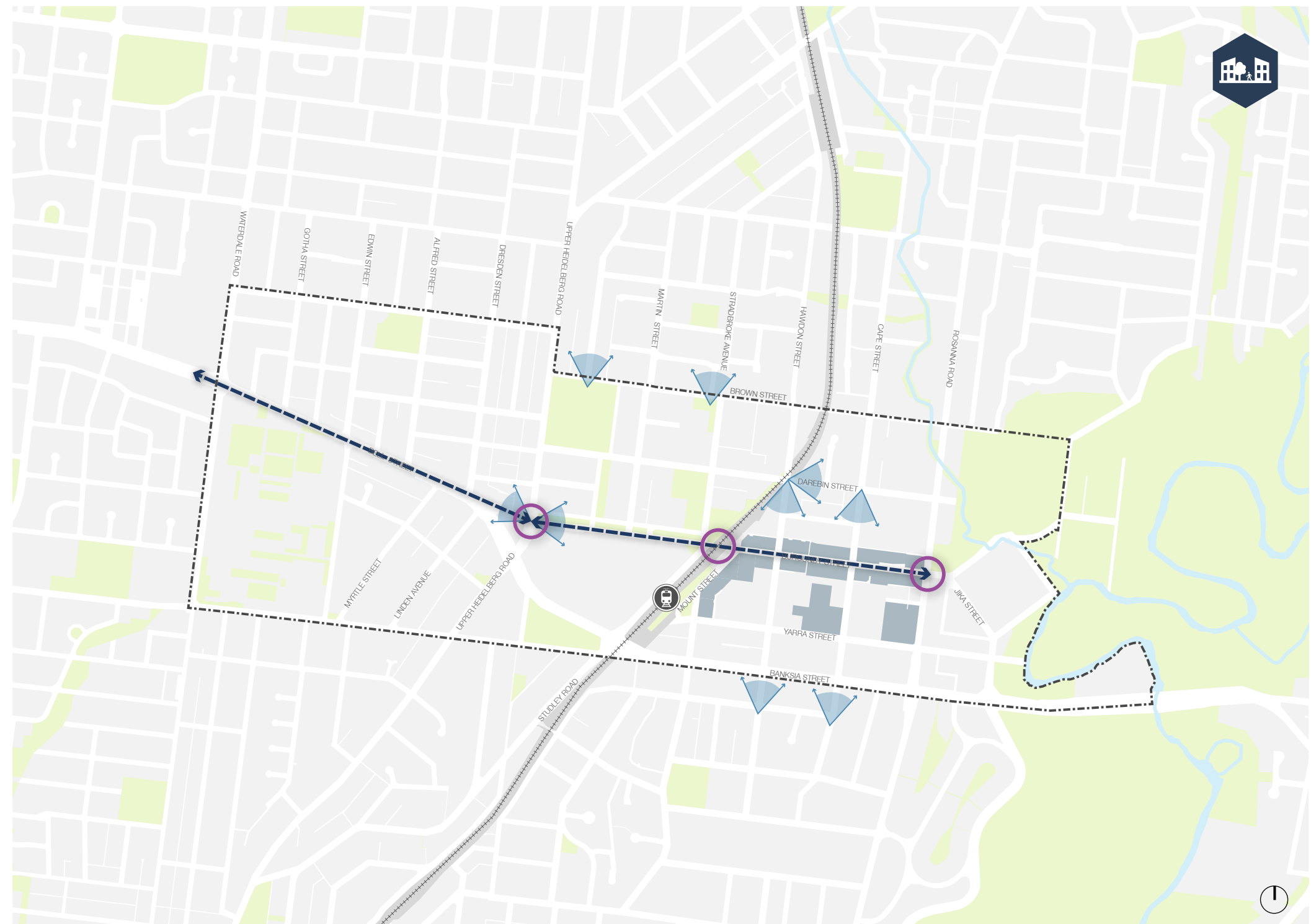


Figure 72: Streetscapes - Initiative 2.1 Map

Initiative 2.2

Reinforce and unify the local identity through the provision of public art and an integrated suite of materials and street furniture, as well as the application of consistent landscape features.

- [Action 2.2.1](#) - Apply consistent street furniture, a coordinated suite of robust, low-key pavements and kerbs, and effective lighting on Burgundy, Bell, Mount and Cape Streets, Upper Heidelberg Road and other key pedestrian spaces.
- [Action 2.2.2](#) – Incorporate public art, including fixed objects, events, performances and temporary installations, to contribute to the identity, activation and interest of key streets and open spaces.
- [Action 2.2.3](#) – Utilise public art as a wayfinding strategy.

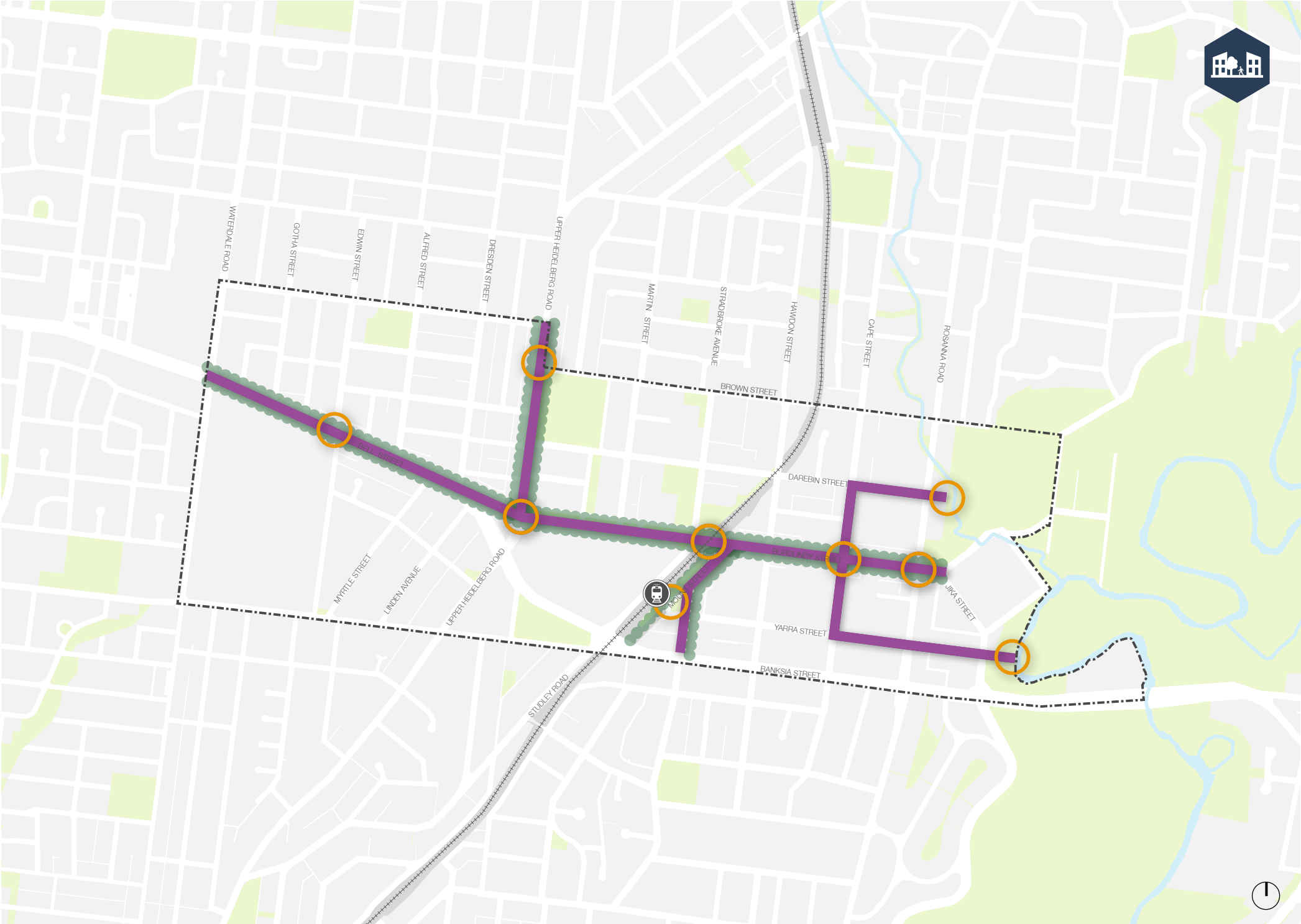


Figure 73: Streetscapes - Initiative 2.2 Map



Initiative 2.3

Reduce the impact of traffic along key walking routes, ensuring that streets and laneways provide opportunities for walking, sitting and other casual recreation, and is supported by vibrant retail activity.

- Action 2.3.1 – Whenever possible, reduce carriageways and provide broad footpaths in main streets with ample space for walking as well as for public seating and street trading activities such as cafes and restaurants.
- Action 2.3.2 – Implement traffic-calming features to increase pedestrian priority on Burgundy Street between Cape and Hawdon Streets.
- Action 2.3.3 – Implement a shared zone on Mount Street, improving the connection between the transport hub and the Burgundy Street activity centre.
- Action 2.3.4 – Implement the Heidelberg Central and Powlett Reserve master plans.

Initiative 2.4

Ensure that all development contributes positively to the spatial definition, architectural character and activation of the public realm.

- Action 2.4.1 – Provide continuous active street interfaces along key pedestrian routes.
- Action 2.4.2 – Provide weather protection to footpaths along key pedestrian routes.
- Action 2.4.3 – Minimise crossovers and other disruptions along footpaths on pedestrian priority routes.

- Site Boundary
- Open Spaces
- Existing Retail and Medical Uses
- Continuous Active Interface and Weather Protection
- Pedestrian Priority Zone
- Shared Zone

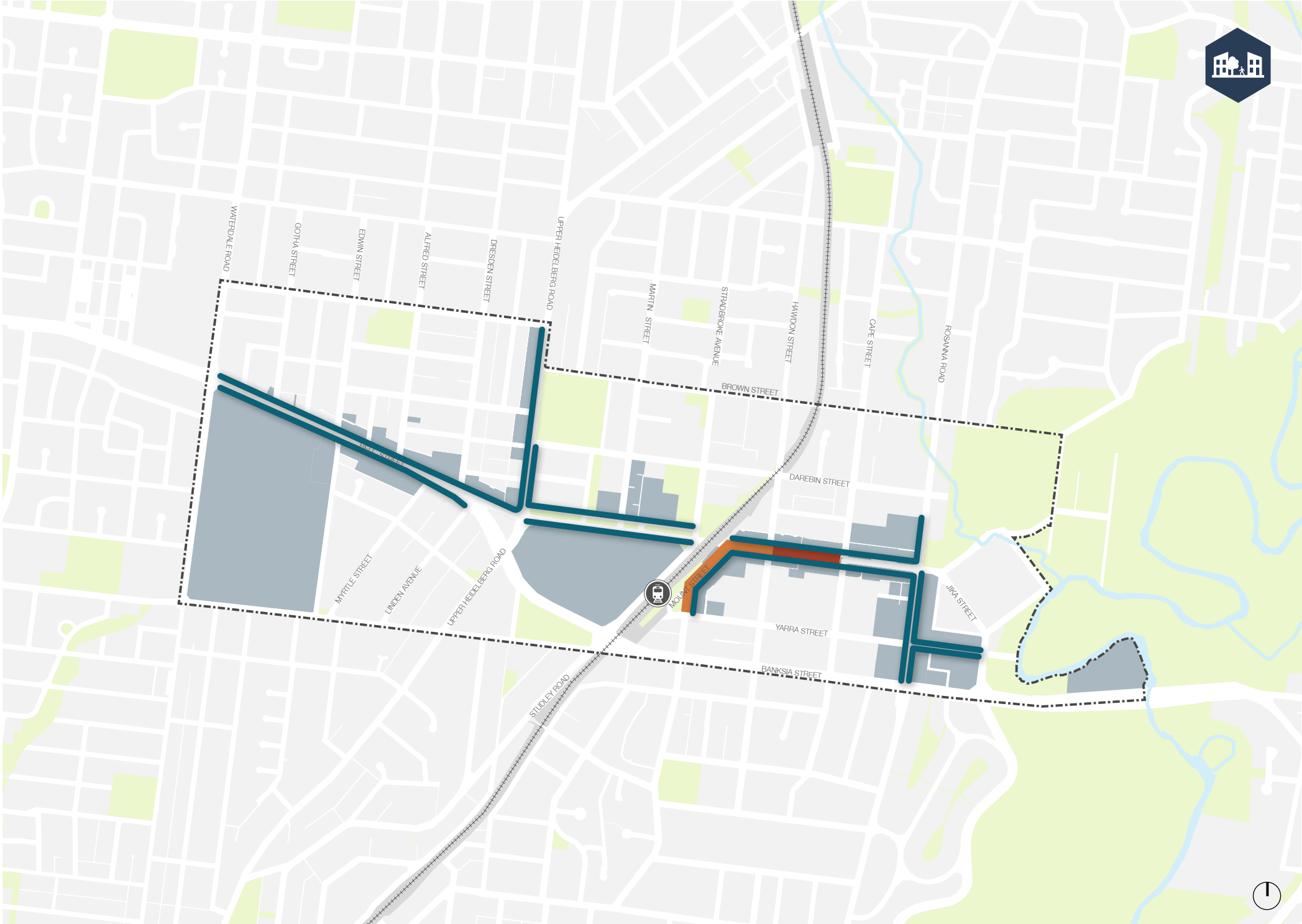


Figure 74: Streetscapes - Initiatives 2.3/2.4 Map

Initiative 2.5

Maximise tree canopy cover and provide appropriate street tree planting in the design of streetscapes.

- [Action 2.5.1](#) – Select street tree species to give a distinctive character to inter-related spaces and to the Precinct as a whole.
- [Action 2.5.2](#) – Provide centre medians with street trees along Bell, Cape, Hawdon and Banksia Streets.
- [Action 2.5.3](#) – Plant street trees between parking bays on one side of all streets where footpaths are less than four metres wide, including Burgundy Street and Upper Heidelberg Road.
- [Action 2.5.4](#) – Develop an urban forest strategy for the Precinct to regulate the actions above.

Initiative 2.6

Incorporate sound water sensitive urban design principles in the detailed design of streets and planting areas to support tree health and to improve rainwater infiltration.

- [Action 2.6.1](#) – Develop water sensitive urban design guidelines for the Precinct to guide future detailed streetscape design.

- Site Boundary
- Open Spaces
- Street Trees Between Parking Bays
- Centre Median With Street Trees

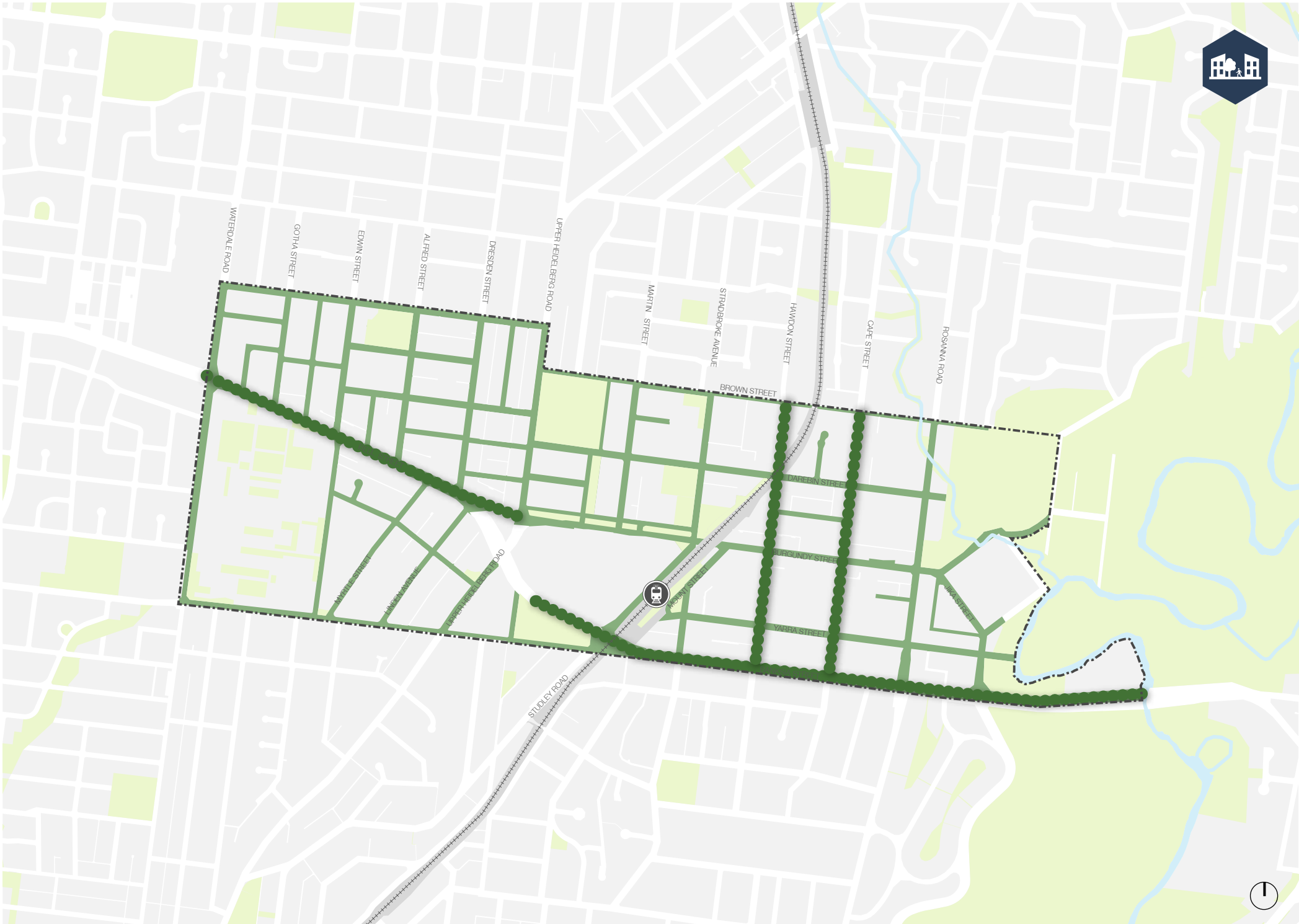


Figure 75: Streetscapes - Initiatives 2.5/2.6 Map

## 7.4 Direction 03: Green and Open Spaces

### Initiative 3.1

Facilitate social interaction, healthy living and reinforce community hubs by providing an attractive, safe and integrated network of public and open spaces.

- **Action 3.1.1 (Local Hub)** – Improve James Reserve to include facilities that enhance its role as a local recreation hub, including family-oriented amenities such as playgrounds and picnic tables and advocate for open spaces within the Repatriation Hospital to maintain, improve and become more accessible for the local community.
- **Action 3.1.2 (Civic Hub)** – Convert small open spaces at the intersection of Burgundy Street and Stradbroke Avenue into a node and civic hub for the Precinct, providing a more useable space for the broader community.
- **Action 3.1.3 (Transport Hub)** – Redevelop the area around Mount Street and the bus interchange to include facilities that enhance its role as a transport hub connected to Austin Hospital and Burgundy Street activity centre. This should include better integration between buses on Mount Street and Heidelberg Rail Station, additional parkiteer, and wider pedestrian footpaths for pedestrians accessing buses.
- **Action 3.1.4 (Neighbourhood Hub)** – Integrate and improve open spaces north and south of Austin Hospital to include facilities that enhance their role as a neighbourhood recreational hub, providing a distinctive and functional recreational walk interconnecting all spaces and Implement the Heidelberg Central and Powlett Reserve master plans.
- **Action 3.1.5 (Cultural Hub)** – Consider the Car Park Sites: Concept Plans & Feasibility Study (2010) to convert Council-owned properties between Burgundy, Cape, Yarra and Hawdon Streets into civic spaces, providing amenities for visitors and students and connecting St. John's Primary School, Our Lady of Mercy College and Heidelberg Primary School.
- **Action 3.1.6 (Regional Hub)** – Improve Heidelberg Park, Heidelberg Gardens and Yarra River frontage to include facilities that enhance its regional recreational hub and environmental roles.

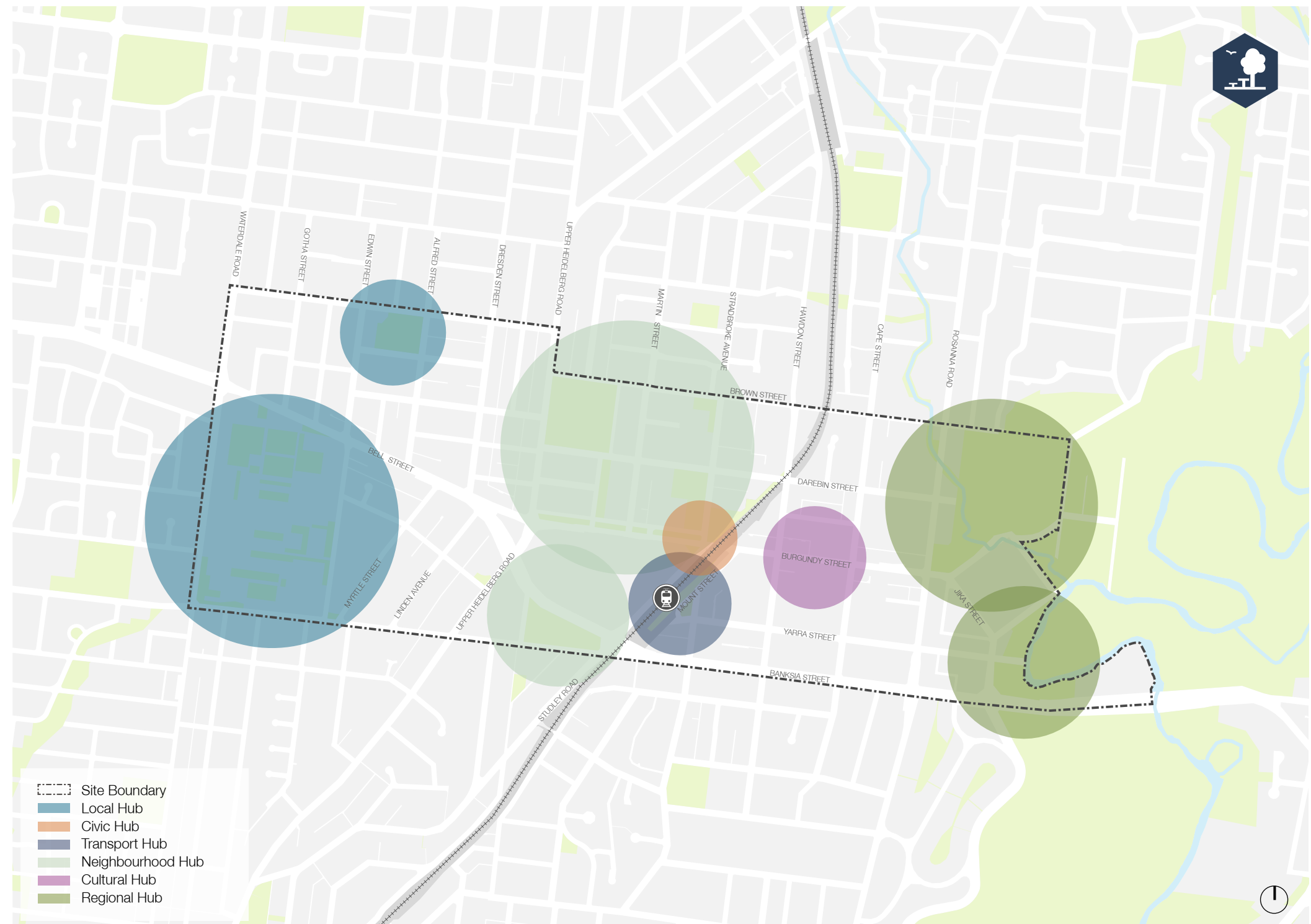


Figure 76: Green and Open Spaces - Initiative 3.1 Map

Initiative 3.2

Increase the diversity of recreational opportunities and experiences by varying the purpose and character of spaces in the Precinct.

- Action 3.2.1 – Plan for the provision of open space facilities regarding local needs as well as other spaces in nearby areas to minimise duplication and provide more diverse recreational opportunities.
- Action 3.2.2 – Use small open spaces that have a relatively low-profile and few heritage constraints, such as Burgundy Road Reserve and Powlett Street Reserve, as places to experiment with innovative design and types of facilities that expand the range of local recreational opportunities.

Initiative 3.3

Encourage the use of underutilised public and private open spaces for local community use, especially within hospitals.

- Action 3.3.1 – Advocate for the development of a master plan for the Repatriation Hospital.
- Action 3.3.2 – Investigate options for replacement of the existing Austin Hospital bridge with a ‘green bridge’, providing additional green infrastructure for the hospital, as well as improved pedestrian connection and DDA compliant access to car parking and open space.

- Site Boundary
- Existing Open Spaces
- Area 1
- Area 2
- Area 3
- Area 4
- Area 5
- Area 6
- Potential Master Plan
- Austin Hospital Bridge

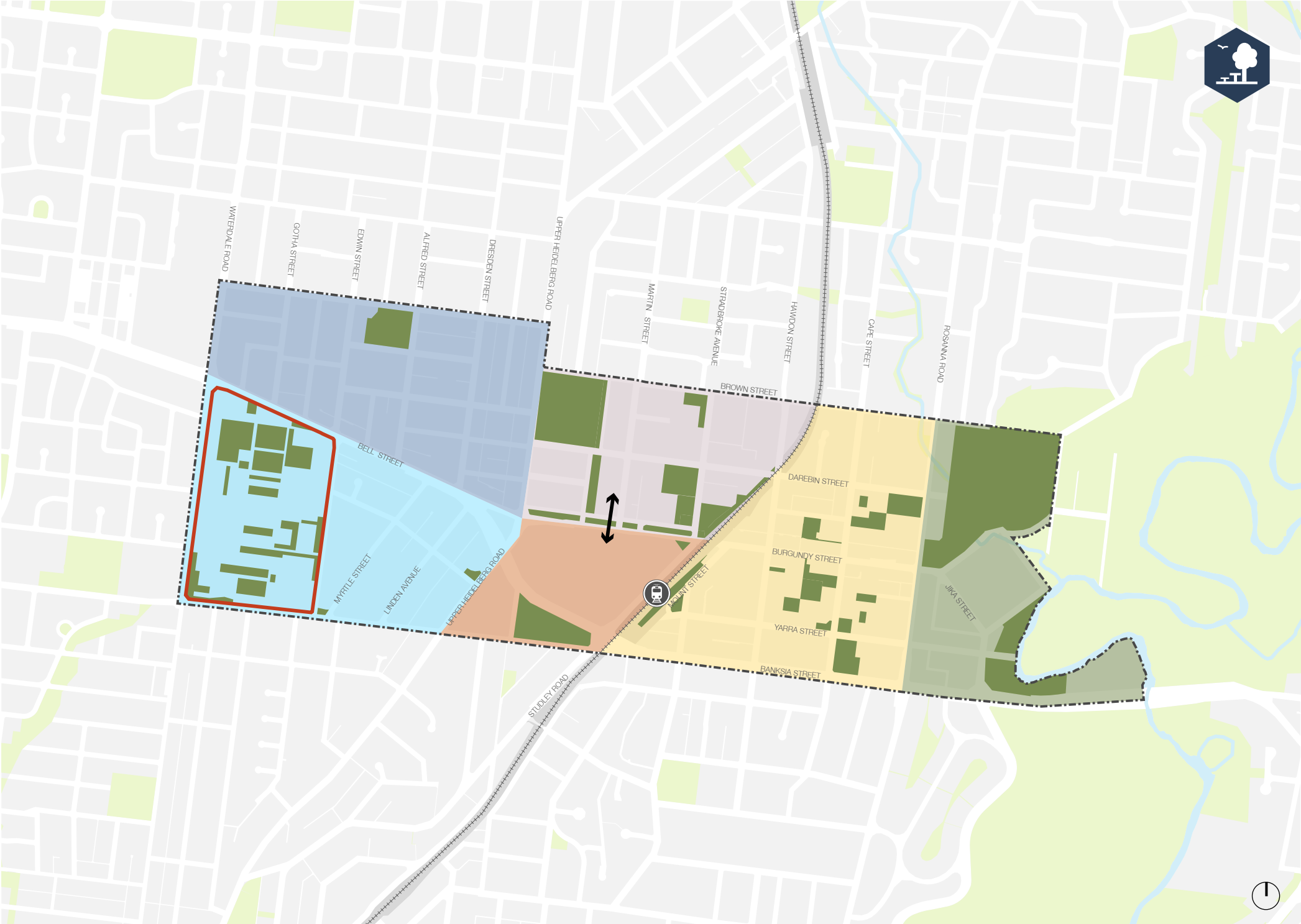


Figure 77: Green and Open Spaces - Initiatives 3.2/3.3 Map



Initiative 3.4

Coordinate and integrate the designs of small reserves and open spaces to achieve a greater visual impact, create attractive walking and recreational routes and provide other recreational benefits.

- [Action 3.4.1](#) – Integrate and improve walking and recreational routes that interlink the existing open spaces to the north of Burgundy and Bell Streets.
- [Action 3.4.2](#) – Prepare a unified planting scheme to create a precinct-wide landscape character.

Initiative 3.5

Expand open spaces into road and transport reserves where possible to create more usable spaces, larger areas for planting and to allow greater infiltration of rainwater.

- [Action 3.5.1](#) – Expand and protect open spaces along the east side of the railway corridor and develop a linear park to improve wildlife habitat and pedestrian connectivity across the Precinct.
- [Action 3.5.2](#) – Redesign Burgundy, Bell, Mount and Cape Streets and Upper Heidelberg Road to expand the provision of street trees and planting.
- [Action 3.5.3](#) – Incorporate sound planting and vegetation within the proposed Burgundy Street pedestrian priority space.
- [Action 3.5.4](#) – Implement the Heidelberg Central and Powlett Reserve master plans.
- [Action 3.5.5](#) – Develop master plans for Bell, Cape and Mount Streets and Upper Heidelberg Road.

- Site Boundary
- Coordinated Design
- Expand and Protect Green Spaces
- Expand Open Space Into Roads

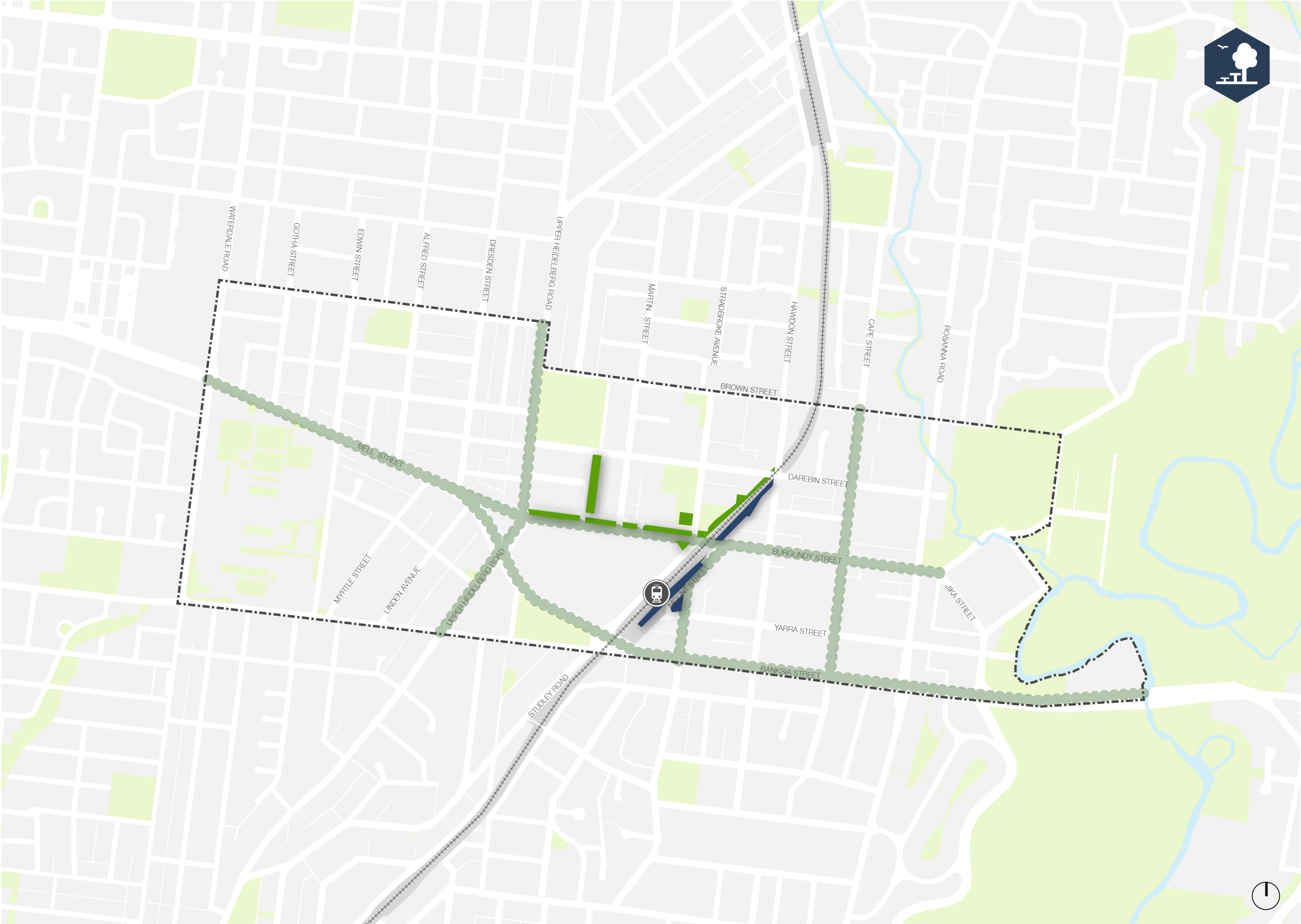


Figure 78: Green and Open Spaces - Initiatives 3.4/3.5 Map



7.5 Direction 04: Active and Public Transport

Initiative 4.1

Improve the public domain around key public transport infrastructure.

- Action 4.1.1 – Expand footpath on Mount Street and Studley Road and redesign open spaces around Heidelberg Station to increase walkability to and from the station.
- Action 4.1.2 – Implement traffic-calming features to increase pedestrian priority on Burgundy Street between Cape and Hawdon Streets.
- Action 4.1.3 – Implement a shared zone on Mount Street, improving the connection between the transport hub and the Burgundy Street activity centre.
- Action 4.1.4 – Improve and widen the pedestrian link under the Heidelberg Station.

Initiative 4.2

Integrate key civic and open spaces with long term transport infrastructure plans.

Initiative 4.3

Reassess bus routes and improve local bus stops to encourage and facilitate public transport access to public open spaces.

- Site Boundary
- Open Spaces
- Proposed Key Civic Spaces
- Expanded Footpath
- Improved and Widened Underpass

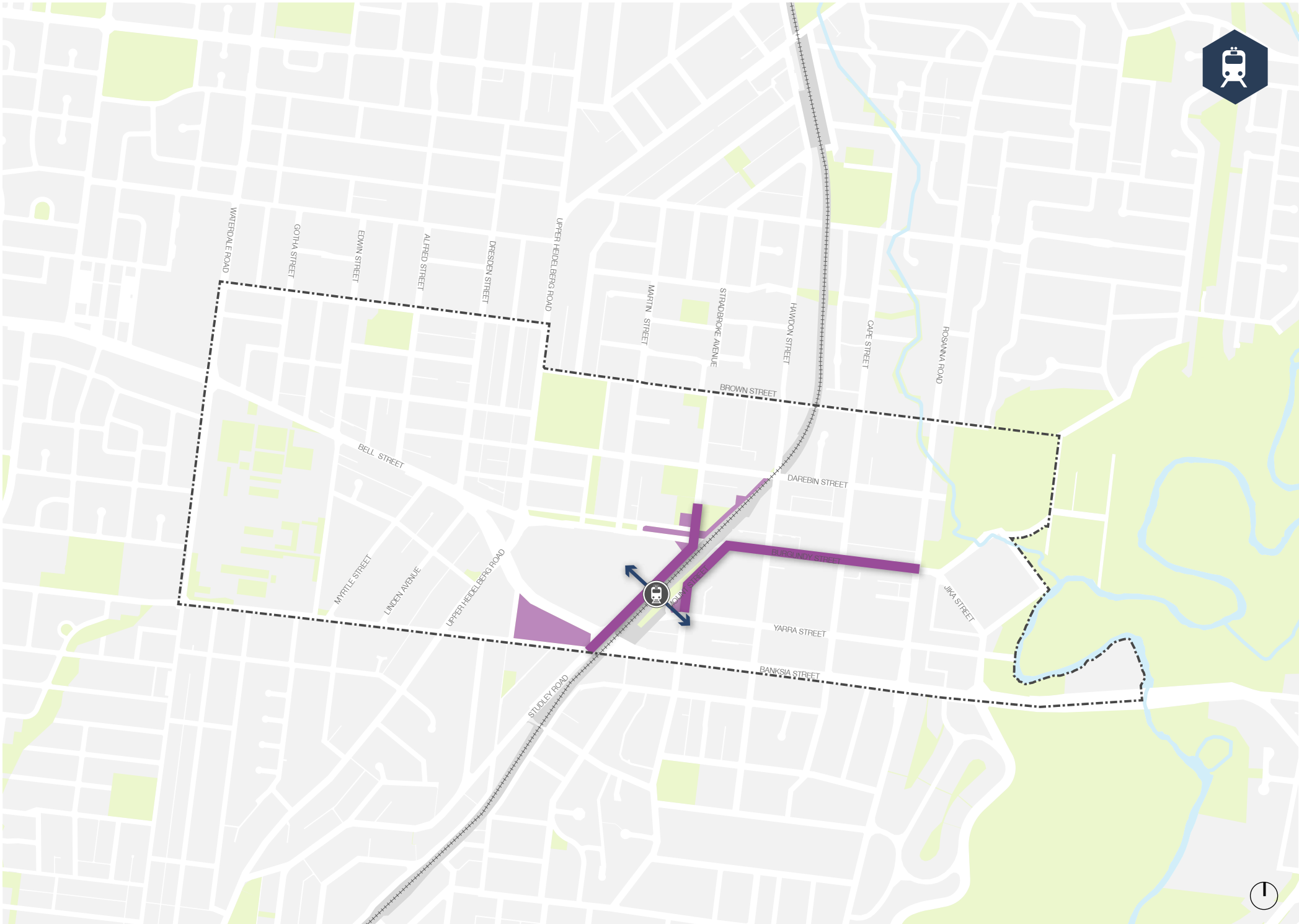


Figure 79: Active and Public Transport - Initiatives 4.1/4.2 Map

Initiative 4.4

Support, facilitate and enhance infrastructure and facilities for cyclists across Heidelberg.

- Action 4.3.1 – Provide on-street bicycle lanes on most streets east of Upper Heidelberg Road and including Upper Heidelberg Road.
- Action 4.3.2 – Provide on-street bicycle lanes on St Hellier, Edwin and Alfred Streets to connect James Reserve to Bell Street Activity Centre.
- Action 4.3.3 – Investigate the potential for a segregated bicycle path along Yarra Street creating a safe and direct link between Heidelberg Station, schools and Banksia Park.
- Action 4.3.4 – Investigate the potential for a segregated bicycle paths along Bell and Banksia Streets and Upper Heidelberg Road, creating a safe and direct east-west link across the Precinct.
- Action 4.3.5 – Provide bicycle racks across the Precinct and end of trip facilities at Heidelberg Station and Warringal Park.

- Site Boundary
- Open Spaces
- On-Street Bicycle Lane
- Segregated Bicycle Path
- Off-Road Bicycle Path
- End-Of-Trip Facility

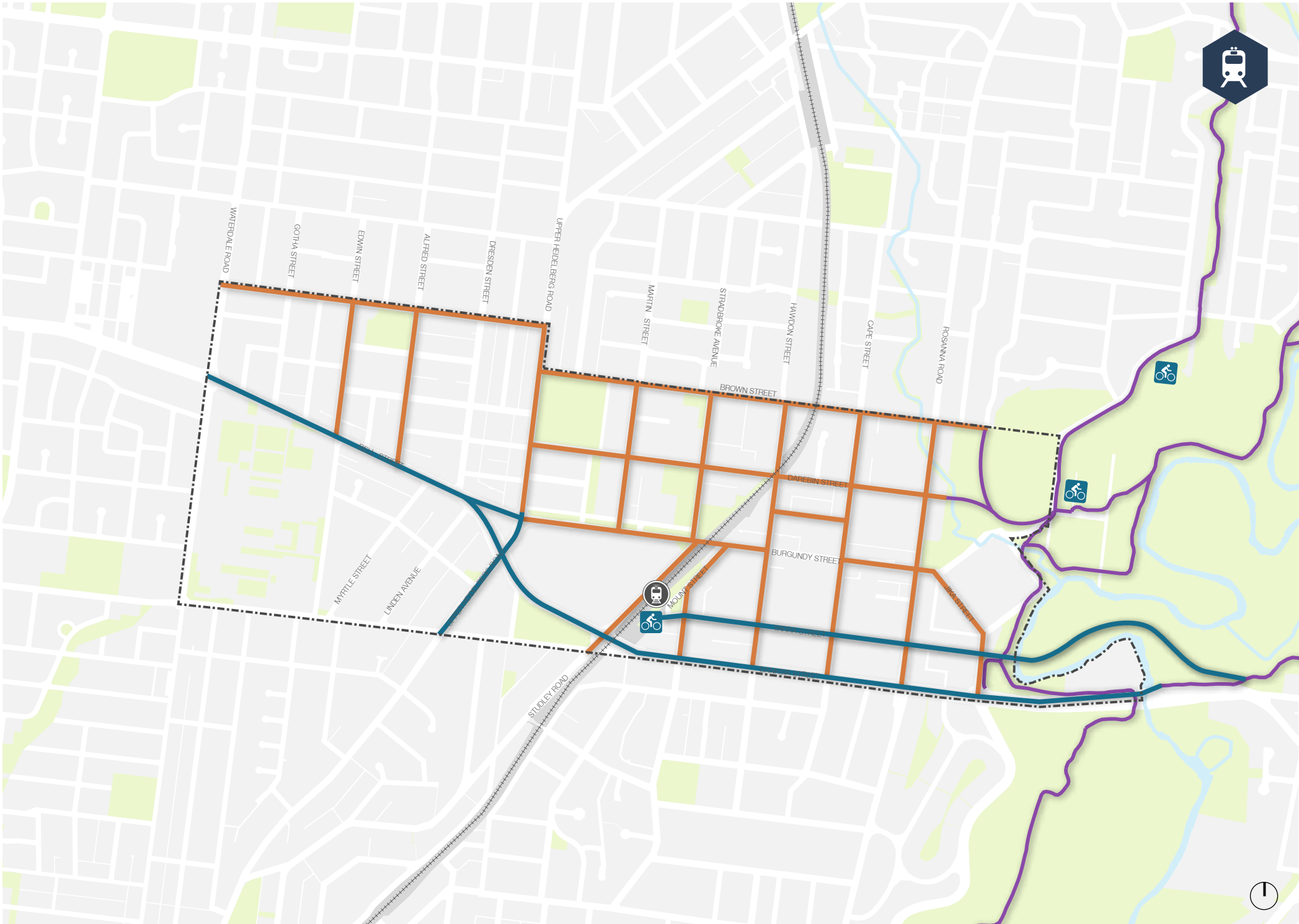


Figure 80: Active and Public Transport - Initiatives 4.3 Map

7.6 Sustainability

Initiative 5.1

Protect and enhance Heidelberg's natural resources and biodiversity by improving the quality of watercourses, creating green habitat corridors and protecting endangered ecological areas.

Initiative 5.2

Enhance, conserve and promote the wealth of social, cultural, recreational and educational opportunities within Heidelberg's natural, cultural and heritage landscapes.

Initiative 5.3

Create resilient built environments through co-ordinated planning and design of greening strategies including street trees, green walls and roofs, canopy trees, cool pavements and water sensitive urban design.

Initiative 5.4

Promote greening across Heidelberg as integral to alleviating the effects of urban heat island effect, and providing benefits such as improved amenity, comfort, health and water quality.

Initiative 5.5

Incorporate sound water sensitive urban design principles in the detailed design of streets and planting areas to support tree health and to improve rainwater infiltration.

7.7 Governance and Management

Initiative 6.1

Continue to invest in local programs encouraging participation and skills training in environmental rehabilitation and open space and maintenance.

Initiative 6.2

Support the development of new and existing programs that enable voluntary community involvement in green initiatives including bush regeneration and community gardens.

Initiative 6.3

Develop local council policies to encourage local food production as a recreational opportunity for local communities.

Initiative 6.4

Establish a cross-organisational Project Steering Group responsible for the establishment of KPI's, implementation and reporting of strategy.

Initiative 6.5

Prepare an implementation plan which develops specific actions to deliver the strategies initiatives.

Initiative 6.6

Report annually to Council on the progress of the strategy.

Initiative 6.7

Review all Council owned properties in the Precinct to identify opportunities for the area.

# Key Open Spaces Recommendations

8





8.1 Recommendations

| Yarra Valley Parklands    |   |
|---------------------------|---|
| Area:                     | 2.43 ha   |
| Hierarchy:                | Metropolitan Open Space   |
| Ownership:                | State Government  |
| Recommendations           |   |
| Access:                   | <ul style="list-style-type: none"><li>• Significantly improve pedestrian and bicycle access to the area.</li><li>• Prioritise pedestrian and bicycle movement along Yarra Street and provide pedestrian crossing at Dora Street.</li><li>• Relocate car park opposite to Yarra Street and create new arrival space instead.</li></ul> |
| Permeability:             | <ul style="list-style-type: none"><li>• Provide pedestrian and bicycle bridge over the Yarra River to crete links to open spaces to the east.</li></ul>   |
| Aesthetics:               | <ul style="list-style-type: none"><li>• Maintain and protect high-quality aesthetics.</li></ul>   |
| Amenities/<br>Facilities: | <ul style="list-style-type: none"><li>• Significantly improve the provision of recreational and sports facilities.</li><li>• Provide recreational facilities that capitalise on the Yarra River, such as piers, boat houses, rowing clubs, etc.</li><li>• Provide wayfinding tools.</li></ul>   |
| Ecology:                  | <ul style="list-style-type: none"><li>• Maintain and protect existing mature trees and bushland environment.</li></ul>  |
| Maintenance:              | <ul style="list-style-type: none"><li>• Maintain high-quality conditions of open green spaces, cycling and walking paths.</li></ul>   |



Figure 81: Yarra Valley Parklands Aerial

Precedents



Figure 82: Studley Park Boat House, Fairfield VIC



Figure 83: Footbridge, Slovenia



|                           |  |
|---------------------------|--|
| Heidelberg Park           |  |
| Area:                     | 10.09 ha   |
| Hierarchy:                | Metropolitan Open Space  |
| Ownership:                | Banyule City Council   |
| Recommendations           |  |
| Access:                   | <ul style="list-style-type: none"><li>• Significantly improve pedestrian and bicycle access to the area.</li><li>• Improve pedestrian crossing at the intersection of Burgundy Street and Rosanna Road to create a gateway to the park.</li><li>• Provide pedestrian crossing at the intersection of Brown Street and Rosanna Road.</li><li>• Relocate car park opposite to Darebin Street and create new arrival space instead.</li><li>• Provide pedestrian and bicycle access along Salt Creek.</li></ul> |
| Permeability:             | <ul style="list-style-type: none"><li>• Improve cycle and foot paths west of the oval.</li></ul>   |
| Aesthetics:               | <ul style="list-style-type: none"><li>• Maintain and protect high-quality aesthetics.</li></ul>  |
| Amenities/<br>Facilities: | <ul style="list-style-type: none"><li>• Intensify use of space by improving existing sports and supporting facilities.</li><li>• Adapt sports facilities for sports tournaments.</li><li>• Provide alternative sports facilities.</li><li>• Provide alternative playgrounds (e.g. waterplay).</li><li>• Provide cycling end-of-trip facilities.</li></ul>  |
| Ecology:                  | <ul style="list-style-type: none"><li>• Maintain and protect existing mature trees and bushland environment.</li></ul>   |
| Maintenance:              | <ul style="list-style-type: none"><li>• Maintain high-quality conditions of open green spaces, cycling and walking paths.</li></ul>  |



Figure 84: Heidelberg Park Aerial

Precedents



Figure 85: Waterplay park, Royal Botanic Gardens, South Yarra VIC



Figure 86: Alternative sports fields, Central Park, NYC



|                           |   |
|---------------------------|---|
| James Reserve             |   |
| Area:                     | 1.45 ha   |
| Hierarchy:                | Neighbourhood Open Space  |
| Ownership:                | Banyule City Council  |
| Recommendations           |   |
| Access:                   | <ul style="list-style-type: none"><li>• Prioritise pedestrian and bicycle movement along Edwin and Alfred Streets.</li><li>• Provide pedestrian crossings on all corners of the reserve.</li></ul>  |
| Permeability:             | <ul style="list-style-type: none"><li>• Remove fencing around the site.</li></ul>   |
| Aesthetics:               | <ul style="list-style-type: none"><li>• Improve site aesthetics, including new trees and vegetation.</li></ul>  |
| Amenities/<br>Facilities: | <ul style="list-style-type: none"><li>• Significantly improve the provision of recreational and sports facilities.</li><li>• Consider proximity with St Hellier Children’s Centre and provide supporting facilities.</li><li>• Improve playground.</li><li>• Intensify use by replacing soccer field with multi-functional space.</li><li>• Provide public toilets and drinking fountains.</li><li>• Provide bicycle racks.</li></ul> |
| Ecology:                  | <ul style="list-style-type: none"><li>• Provide new planting.</li><li>• Provide indigenous vegetation species.</li></ul>  |
| Maintenance:              | <ul style="list-style-type: none"><li>• Improve overall maintenance of the site.</li><li>• Provide rubbish bins.</li></ul>  |

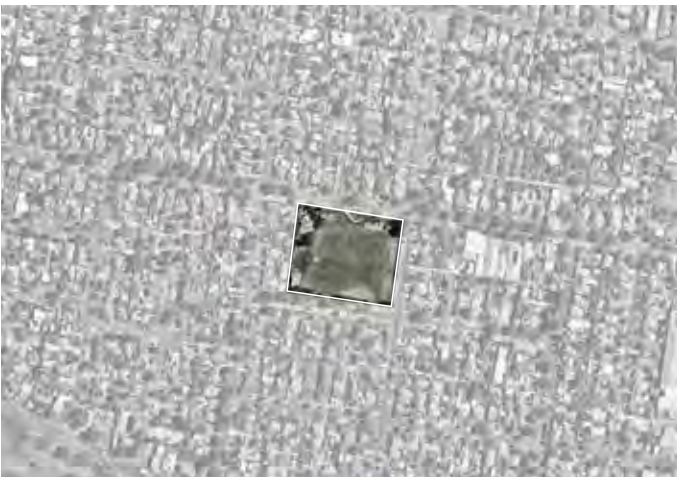


Figure 87: James Reserve Aerial

Precedents



Figure 88: High-quality playground, Bald Hill Park, Clarinda VIC



Figure 89: Sports space, Booran Reserve, Glen Huntly VIC



Figure 90: Multifunctional space, Collingwood Farmers Market, VIC



|                           |  |
|---------------------------|--|
| Remembrance Park          |  |
| Area:                     | 1.82 ha  |
| Hierarchy:                | Neighbourhood Open Space   |
| Ownership:                | Banyule City Council   |
| Recommendations           |  |
| Access:                   | <ul style="list-style-type: none"><li>• Significantly improve pedestrian and bicycle access to the area.</li><li>• Improve pedestrian crossing at the intersection of Bell-Banksia Link and Studley Road to create a gateway to the park.</li><li>• Utilise road reserve south of the intersection of Bell-Banksia Link and Studley Road for improved pedestrian connections.</li><li>• Investigate potential for footpath along the rail corridor with access ramps south of Bell-Banksia.</li><li>• Investigate potential for pedestrian overpass to connect with Austin Hospital.</li><li>• Reinforce and improve existing footpaths connecting to Upper Heidelberg Road.</li></ul> |
| Permeability:             | <ul style="list-style-type: none"><li>• Maintain and protect high-level of site permeability.</li></ul>  |
| Aesthetics:               | <ul style="list-style-type: none"><li>• Maintain and protect high-quality aesthetics.</li></ul>  |
| Amenities/<br>Facilities: | <ul style="list-style-type: none"><li>• Provide public toilets.</li><li>• Provide street furniture.</li></ul>  |
| Ecology:                  | <ul style="list-style-type: none"><li>• Maintain and protect existing mature trees and bushland environment.</li><li>• Investigate potential for a botanical gardens.</li></ul>  |
| Maintenance:              | <ul style="list-style-type: none"><li>• Maintain high-quality conditions of open green spaces, cycling and walking paths.</li></ul>  |



Figure 91: Remembrance Park Aerial

Precedents



Figure 92: The Rainbow Bridge, Long Beach, California



Figure 93: Suspended park/overpass, Paleiswartier, Netherlands



Figure 94: Suspended park/overpass, Paleiswartier, Netherlands



Key Open Spaces Recommendations

DRAFT

| Repatriation Hospital             |   |
|-----------------------------------|---|
| Area:                             | Open space 5.92 ha - Site 20.95 ha  |
| Hierarchy:                        | Potential for Neighbourhood Space   |
| Ownership:                        | State Government  |
| Recommendations for Redevelopment |   |
| General:                          | <ul style="list-style-type: none"><li>The 20.95 ha site presents great potential to be redeveloped into a health-focused mixed-use precinct.</li><li>If redevelopment occurs, part of the existing open spaces should be retained, improved and be publicly accessible to serve the broader community.</li><li>Investigate potential to develop a master plan for the site.</li></ul> |
| Access:                           | <ul style="list-style-type: none"><li>Significantly improve pedestrian and bicycle access for communities north of Bell Street.</li><li>Improve pedestrian crossing at the intersections of Bell Street with Waterdale Road and Edwin Street.</li><li>Provide pedestrian crossing at the intersection of Bell Street and Gotha Street</li></ul>                                       |
| Permeability:                     | <ul style="list-style-type: none"><li>Remove fencing around site.</li><li>Investigate potential to increase permeability through buildings.</li></ul>   |
| Aesthetics:                       | <ul style="list-style-type: none"><li>Introduce more substantial greenery and trees.</li></ul>  |
| Amenities/<br>Facilities:         | <ul style="list-style-type: none"><li>Provide amenities and facilities for community use.</li></ul>   |
| Ecology:                          | <ul style="list-style-type: none"><li>Provide new planting.</li><li>Provide indigenous vegetation species</li></ul>   |



Figure 95: Repatriation Hospital Aerial

Precedents



Figure 96: Sculptural playground, Lilydale Lake Playspace, Lilydale VIC



Figure 97: Hyde Park Senior Playground, London, UK



Figure 98: Green spaces within hospital site, Perth Children's Hospital, Perth



| Transport Reserve (South) |   |
|---------------------------|---|
| Area:                     | 0.57 ha   |
| Hierarchy:                | Neighbourhood Open Space  |
| Ownership:                | Public Authority  |
| Recommendations           |   |
| Access:                   | <ul style="list-style-type: none"><li>• Maintain and promote pedestrian and cycling focus within the area.</li><li>• Promote connection to Hospital.</li></ul>  |
| Permeability:             | <ul style="list-style-type: none"><li>• Maintain preference toward walkability.</li><li>• Consider development of pedestrian-priority space including reduction of car access along Mount Street including speed reductions.</li></ul>  |
| Aesthetics:               | <ul style="list-style-type: none"><li>• Promote existing green character of the area.</li></ul>   |
| Amenities/<br>Facilities: | <ul style="list-style-type: none"><li>• Maintain wayfinding signage.</li><li>• Maintain and improve seating and community facilities and promote connection to retail space.</li><li>• Provide public toilets.</li><li>• Maintain cycling infrastructure and provide end-of-trip facilities.</li><li>• Investigate redevelopment of green space along railway line.</li><li>• Implement high-quality lighting to promote late-night safety.</li></ul> |
| Ecology:                  | <ul style="list-style-type: none"><li>• Maintain and protect existing trees.</li><li>• Promote additional vegetation.</li></ul>   |
| Maintenance               | <ul style="list-style-type: none"><li>• Maintain cycling and walking paths.</li><li>• Maintain seating and civic space.</li></ul>   |



Figure 99: Transport Reserve (South) Aerial

Precedents



Figure 100: Pedestrian and cycling priority street, Brighton, UK



Figure 101: Pedestrian path, Buffalo, US



Figure 102: Walkable bus interchange, Rhode Island, USA



Figure 103: Shared space, Arizona, US



Figure 104: Walkable neighbourhood, Seoul, South Korea



| Intersection of Burgundy Street and Studley Road |  |
|--|--|
| Area:  | 2.65 ha  |
| Hierarchy:                                       | Potential for Neighbourhood Open Space   |
| Ownership:                                       | Banyule City Council   |
| Recommendations                                  |  |
| Access:  | <ul style="list-style-type: none"><li>• Improve pedestrian and bicycle access to the area, including the creation of bicycle paths.</li><li>• Promote intersection improvements and investigate possibility of a pedestrian scramble.</li><li>• Promote commuter connection to and from Heidelberg Railway Station.</li></ul>  |
| Permeability:                                    | <ul style="list-style-type: none"><li>• Prioritise pedestrian movement from significant landmarks including Austin Hospital, Burgundy Street Activity Centre, and the Heidelberg Railway Station.</li></ul>  |
| Aesthetics:                                      | <ul style="list-style-type: none"><li>• Maintain and protect high-quality aesthetics.</li><li>• Develop area into an attractive civic space.</li></ul>   |
| Amenities/<br>Facilities:                        | <ul style="list-style-type: none"><li>• Consider amalgamation of spaces into a civic hub.</li><li>• Provide additional seating and promote passive recreation space.</li><li>• Consider speed reductions, coinciding with Burgundy and Powlett Reserves Master Plan speed reductions along Burgundy Street.</li><li>• Provide playgrounds and public toilets.</li><li>• Redevelop disused Council-owned land adjacent to the Heidelberg Bowling Club.</li><li>• Improve streetscape interface along Burgundy Street.</li></ul> |
| Ecology:   | <ul style="list-style-type: none"><li>• Maintain and protect existing mature trees and plant additional vegetation.</li></ul>  |
| Maintenance:                                     | <ul style="list-style-type: none"><li>• Maintain conditions of existing green spaces and walking paths.</li></ul>  |

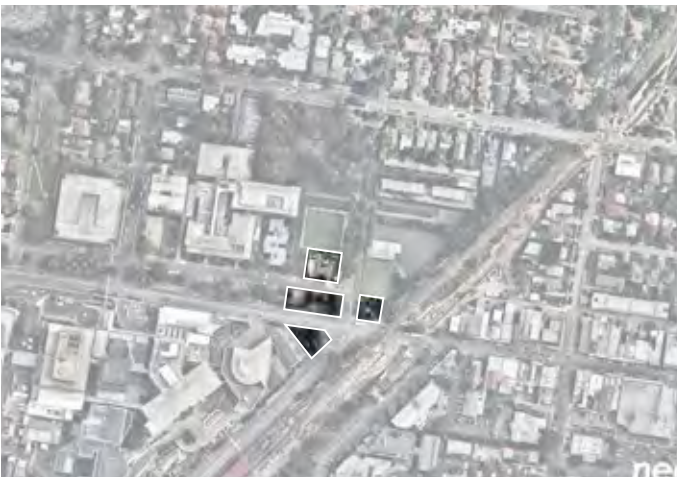


Figure 105: Intersection of Burgundy Street and Studley Road Aerial

Precedents



Figure 106: Urban Plaza, Yokohama, Japan



Figure 107: Civic Space, Sommerville, USA



Figure 108: Pedestrian scramble, Los Angeles, USA



|                           |  |
|---------------------------|--|
| Service Reserve           |  |
| Area:                     | 0.86 ha  |
| Hierarchy:                | Local Open Space   |
| Ownership:                | Banyule City Council   |
| Recommendations           |  |
| Access:                   | <ul style="list-style-type: none"><li>• Improve pedestrian access to the area.</li></ul>   |
| Permeability:             | <ul style="list-style-type: none"><li>• Consider innovative responses to topographical limitations.</li><li>• Improve pedestrian linkage within the site, providing permeability away from existing paths.</li></ul>   |
| Aesthetics:               | <ul style="list-style-type: none"><li>• Improve quality of site aesthetic.</li></ul>   |
| Amenities/<br>Facilities: | <ul style="list-style-type: none"><li>• Improve the provision of recreational and sports facilities.</li><li>• Consider proximity to Heidelberg Bowling Club and provide facilities for members.</li><li>• Provide playground opportunities.</li><li>• Provide innovative seating facilities/community meeting space at south of the site.</li><li>• Capitalise on topography to provide multi-functional spaces for community events (e.g. outdoors cinema)</li></ul> |
| Ecology:                  | <ul style="list-style-type: none"><li>• Promote existing mature trees and bushland environment.</li><li>• Improve conditions of lawn.</li><li>• Promote re-vegetation of certain areas.</li></ul>  |
| Maintenance:              | <ul style="list-style-type: none"><li>• Maintain site ecology and lawn.</li></ul>  |



Figure 109: Service Reserve Aerial

Precedents



Figure 110: Sloped seating, Lewis River, USA



Figure 111: Sloped playspace, Issaquah, Usa



Figure 112: Revegetation, Edgars Creek, VIC



| Public Transport Reserve (North) |   |
|----------------------------------|---|
| Area:                            | 0.43 ha   |
| Hierarchy:                       | Local Open Space  |
| Ownership:                       | VicTrack  |
| Recommendations                  |   |
| Access:                          | <ul style="list-style-type: none"><li>Maintain quality pedestrian access to the area.</li><li>Promote and improve commuter connection to and from Heidelberg Railway Station.</li></ul>   |
| Permeability:                    | <ul style="list-style-type: none"><li>Prioritise pedestrian movement from significant landmarks including Austin Hospital, Burgundy Street Activity Centre, and the Heidelberg Railway Station.</li></ul>   |
| Aesthetics:                      | <ul style="list-style-type: none"><li>Promote street art within pathway.</li><li>Maintain and protect high-quality aesthetics.</li></ul>  |
| Amenities/<br>Facilities:        | <ul style="list-style-type: none"><li>Improve entrances to path including wayfinding signage.</li><li>Provide additional seating along pathway.</li><li>Consider inclusion of a passive recreation space. or pocket park.</li><li>Implement high-quality lighting to promote late-night safety.</li></ul> |
| Ecology:                         | <ul style="list-style-type: none"><li>Maintain and protect existing mature trees and plant additional vegetation.</li></ul>   |
| Maintenance:                     | <ul style="list-style-type: none"><li>Maintain conditions of existing green space.</li><li>Improve condition of pathway.</li></ul>  |



Figure 113: Transport Reserve (North) Aerial

Potential future open space  
suitable for pedestrian link  
and trail on VicTrack land

Precedents



Figure 114: Urban seating, Docklands, VIC

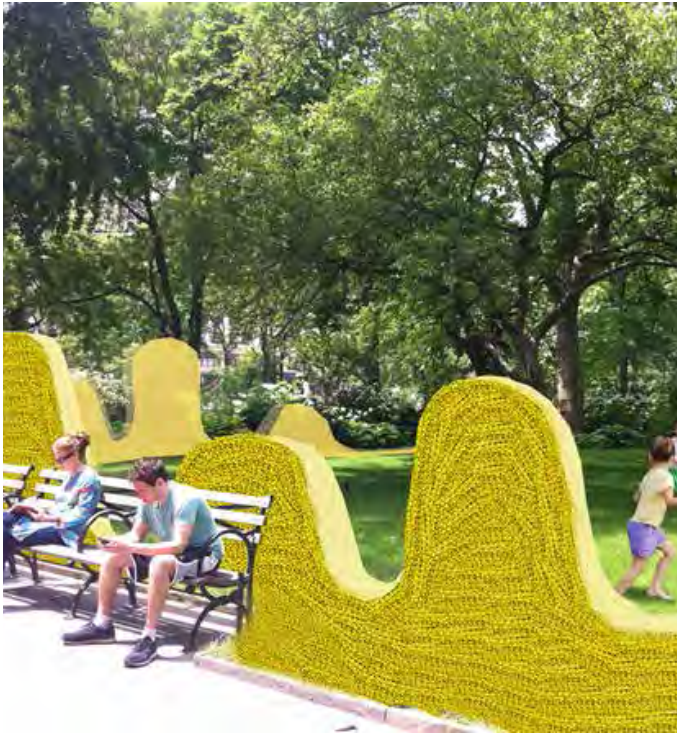


Figure 115: Street art along path, New York, US



Figure 116: Small park seating, Dandenong, VIC



| Arthur Rylah Institute for Environmental Research |   |
|---|---|
| Area:   | 0.40 ha   |
| Hierarchy:  | Local Open Space  |
| Ownership:  | State Government  |
| Recommendations                                   |   |
| Access:   | <ul style="list-style-type: none"><li>• Improve pedestrian access.</li></ul>  |
| Permeability:                                     | <ul style="list-style-type: none"><li>• Create permeability within the site.</li></ul>  |
| Aesthetics:                                       | <ul style="list-style-type: none"><li>• Significantly improve site aesthetic.</li></ul>   |
| Amenities/<br>Facilities:                         | <ul style="list-style-type: none"><li>• Provide street furniture.</li></ul>   |
| Ecology:  | <ul style="list-style-type: none"><li>• Maintain and protect existing mature trees.</li><li>• Plant significantly more vegetation.</li><li>• Protect and promote existing views and vistas.</li></ul> |
| Maintenance:                                      | <ul style="list-style-type: none"><li>• Maintain conditions of existing green space.</li><li>• Significantly improve conditions of lawns.</li></ul>   |

Precedents



Figure 118: High-quality street furniture, Tianjin Gardens, China



Figure 119: Well maintained park, Toronto, Canada



Figure 117: Playground, Kew, VIC



Figure 120: Well maintained park, Melbourne, VIC



|                           |   |
|---------------------------|---|
| Melbourne Water Reserve   |   |
| Area:                     | 0.09 ha   |
| Hierarchy:                | Pocket Park   |
| Ownership:                | Banyule City Council  |
| Recommendations           |   |
| Access:                   | <ul style="list-style-type: none"><li>• Improve pedestrian and bicycle access.</li></ul>  |
| Permeability:             | <ul style="list-style-type: none"><li>• Improve site permeability</li></ul>   |
| Aesthetics:               | <ul style="list-style-type: none"><li>• Greatly improve site aesthetics.</li><li>• Reduce impact of built form of water tank, which will be removed in the future.</li></ul>  |
| Amenities/<br>Facilities: | <ul style="list-style-type: none"><li>• Consider impact from Melbourne Water Reserve Redevelopment Study.</li><li>• Substantially improve quality of play equipment.</li><li>• Provide seating and promote passive recreation space.</li><li>• Greatly improve streetscape interface, and consider vegetation to protect site from Upper Heidelberg Road</li><li>• Reduce site barriers such as fences and gates.</li></ul> |
| Ecology:                  | <ul style="list-style-type: none"><li>• Maintain and protect existing mature trees.</li><li>• Plant additional vegetation, focusing upon large trees.</li><li>• Improve lawn conditions.</li></ul>  |
| Maintenance:              | <ul style="list-style-type: none"><li>• Improve conditions of existing green spaces.</li><li>• Greatly improve conditions of walking paths.</li></ul>   |



Figure 121: Melbourne Water Reserve Aerial

Precedents



Figure 122: Playground, Tachikawa, Japan



Figure 123: Native parkland vegetation, Cranbourne Royal Botanic Gardens VIC



|                           |   |
|---------------------------|---|
| Salt Creek Flood Plains   |   |
| Area:                     | 0.39 ha   |
| Hierarchy:                | Pocket Park   |
| Ownership:                | Public Authority  |
| Recommendations           |   |
| Access:                   | <ul style="list-style-type: none"><li>Develop pedestrian and cycling access.</li></ul>  |
| Permeability:             | <ul style="list-style-type: none"><li>Create permeability within the site.</li><li>Develop cycling path.</li></ul>  |
| Aesthetics:               | <ul style="list-style-type: none"><li>Maintain quality green space.</li></ul>   |
| Amenities/<br>Facilities: | <ul style="list-style-type: none"><li>Create public use space.</li><li>Investigate cycling route along Salt Creek.</li><li>Develop cycling connection to Heidelberg Park.</li><li>Develop priority crossing for cyclists.</li></ul> |
| Ecology:                  | <ul style="list-style-type: none"><li>Maintain and protect existing mature trees.</li></ul>   |
| Maintenance:              | <ul style="list-style-type: none"><li>Maintain bushland.</li></ul>  |



Figure 124: Salt Creek Food Plains Aerial

Precedents



Figure 125: Cycling path, Moonee Ponds, VIC



Figure 126: Cycling path, Merri Creek VIC



| Ivanhoe Lions Park        |  |
|---------------------------|--|
| Area:                     | 0.05 ha  |
| Hierarchy:                | Pocket Park  |
| Ownership:                | Banyule City Council   |
| Recommendations           |  |
| Access:                   | <ul style="list-style-type: none"><li>Maintain ease of public access.</li></ul>  |
| Permeability:             | <ul style="list-style-type: none"><li>Maintain quality permeability within the site.</li><li>Maintain thoroughfare.</li></ul>    |
| Aesthetics:               | <ul style="list-style-type: none"><li>Maintain green space.</li></ul>  |
| Amenities/<br>Facilities: | <ul style="list-style-type: none"><li>Improve seating facilities.</li><li>Provide public art</li></ul>                           |
| Ecology:                  | <ul style="list-style-type: none"><li>Maintain and protect existing mature trees.</li><li>Plant additional vegetation.</li></ul> |
| Maintenance:              | <ul style="list-style-type: none"><li>Maintain lawn and garden.</li></ul>  |

Additional Open Spaces

| Site  | Recommendation  |
|---|---|
| <ul style="list-style-type: none"><li>Warringal Cemetery</li></ul>  | <ul style="list-style-type: none"><li>Maintain grounds.</li><li>Promote thoroughfare.</li></ul>   |
| <ul style="list-style-type: none"><li>Burgundy Street Reserve</li><li>Powlett Street Reserve</li></ul>  | <ul style="list-style-type: none"><li>Follow direction from Burgundy and Powlett Reserves Master Plan.</li></ul>  |
| <ul style="list-style-type: none"><li>Heidelberg Bowling Club</li></ul>   | <ul style="list-style-type: none"><li>Maintain facilities.</li><li>Promote streetscape interface.</li><li>Encourage public-private partnerships for after-hours community usage.</li></ul>                          |
| <ul style="list-style-type: none"><li>Cartmell Street Car Park</li><li>Hawdon Street/Cape Street Car Park</li></ul>   | <ul style="list-style-type: none"><li>Follow direction from Heidelberg Car Park Sites Concept Plan and Visibility Study.</li></ul>  |
| <ul style="list-style-type: none"><li>St John’s Church</li><li>St John’s Primary School</li><li>Our Lady of Mercy College</li><li>Heidelberg Primary School</li></ul> | <ul style="list-style-type: none"><li>Maintain grounds.</li><li>Research after-hours usage with existing community groups.</li><li>Encourage public-private partnerships for after-hours community usage.</li></ul> |

Precedents



Figure 127: Ivanhoe Lions Park Aerial.



Figure 128: Aboriginal Urban Art, Melbourne VIC

SJB Urban

DRAFT

[sjb.com.au](http://sjb.com.au)

We create spaces people love.  
SJB is passionate about the  
possibilities of architecture,  
interiors, urban design  
and planning.  
Let's collaborate.

Level 5, 18 Oliver Lane  
Melbourne VIC 3000  
Australia  
T. 61 3 9699 6688  
[urban@sjb.com.au](mailto:urban@sjb.com.au)  
[sjb.com.au](http://sjb.com.au)