

a scattering of moments masterplan

upgrade to toilets
access for all abilities and refurbishment of existing toilets

nature play
nestled in the existing tranquil vegetation this play space is a sensory garden with water and nature play opportunities

bridge and duck viewing
the connecting bridge extends to provide a spot to pause and look out over the duck habitat on the lake

Legend

- existing vegetation
- proposed tree
- timber deck
- concrete path
- gravel path
- lawn
- existing path
- proposed planting
- lake edge vegetation
- pavers/steppers
- moment for play
- moment for fitness
- moment for pause
- moment for contemplation
- proposed retaining wall
- existing retaining wall



path network
accessible 3m wide loop promenade and running track around lake

connection across lake
informal connection such as stepping boulders across the lake strengthening the desire path

accessible bridge
curved bridge connects the loop path around the lake and provides an accessible connection without back-tracking to the carpark

accessible entry
providing access to the loop path, lake, future toilets and tennis courts

future toilets
with ccessible connection from street level

upper path
2m path traversing the upper terrace of the gardens, offering views of the lake from a higher vantage point

path network
improve existing path along lake to create accessible loop promenade and running track

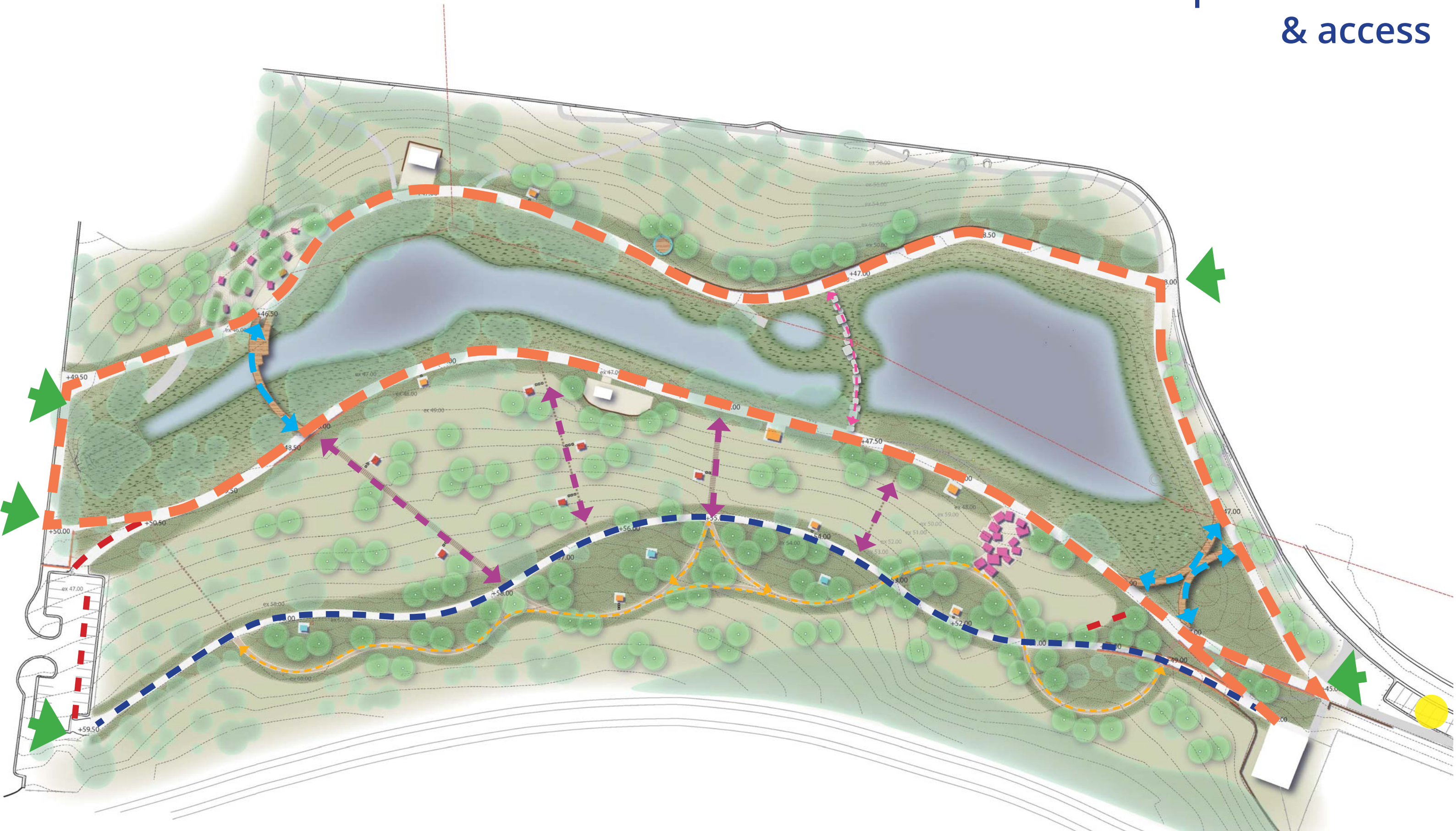
a moment for health
steps and paths that follow the steep terrain offering a work out, dotted with framed exercise moments

bush walk
1.5m path that weaves and winds its way though the gardens and new vegetation for a meandering stroll

revegetation
additional tree planting will help with errosion and re-establish the natural setting of Kalparrin Gardens

active play
swinging, climbing, sliding, jumping, this is the active play space over looking the lake.

path network & access

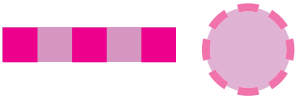


Legend

- | | | | | | |
|--|------------------------------|--|-------------------------------|--|---------------------------|
| | accessible loop path | | bush walk (not all access) | | main entrances to gardens |
| | accessible secondary path | | accessible bridge connections | | active challenging tracks |
| | steep paths (not all access) | | lake link (not all access) | | accessible car spot |



Legend



stage 1
Path network improvements,
western bridge and accessible
parking bay



stage 2
Active play space
and new toilets



stage 3
Secondary access path,
fitness , eastern bridge
& bush walk



stage 4
Existing toilet upgrade,
nature play space & lake
connection