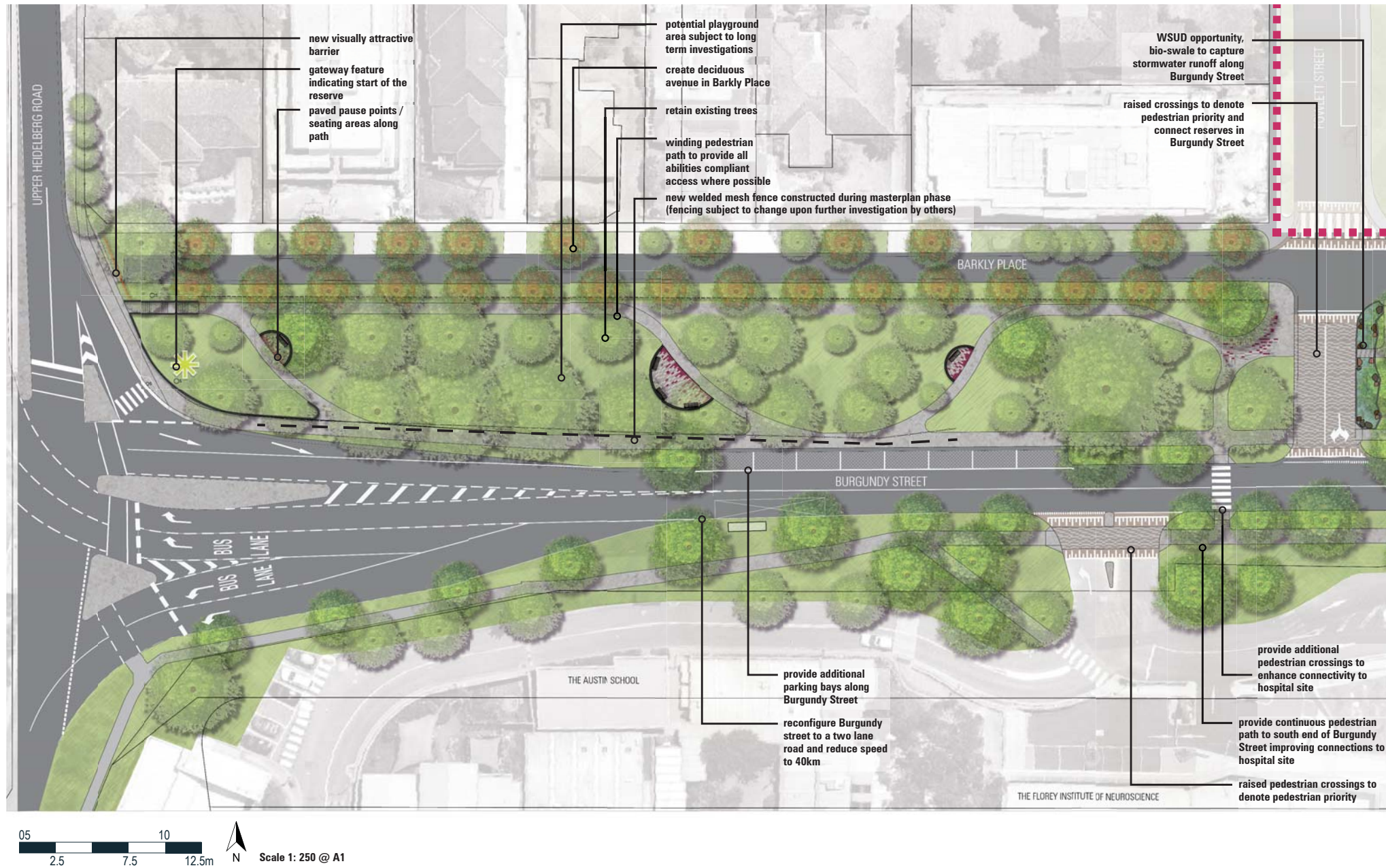
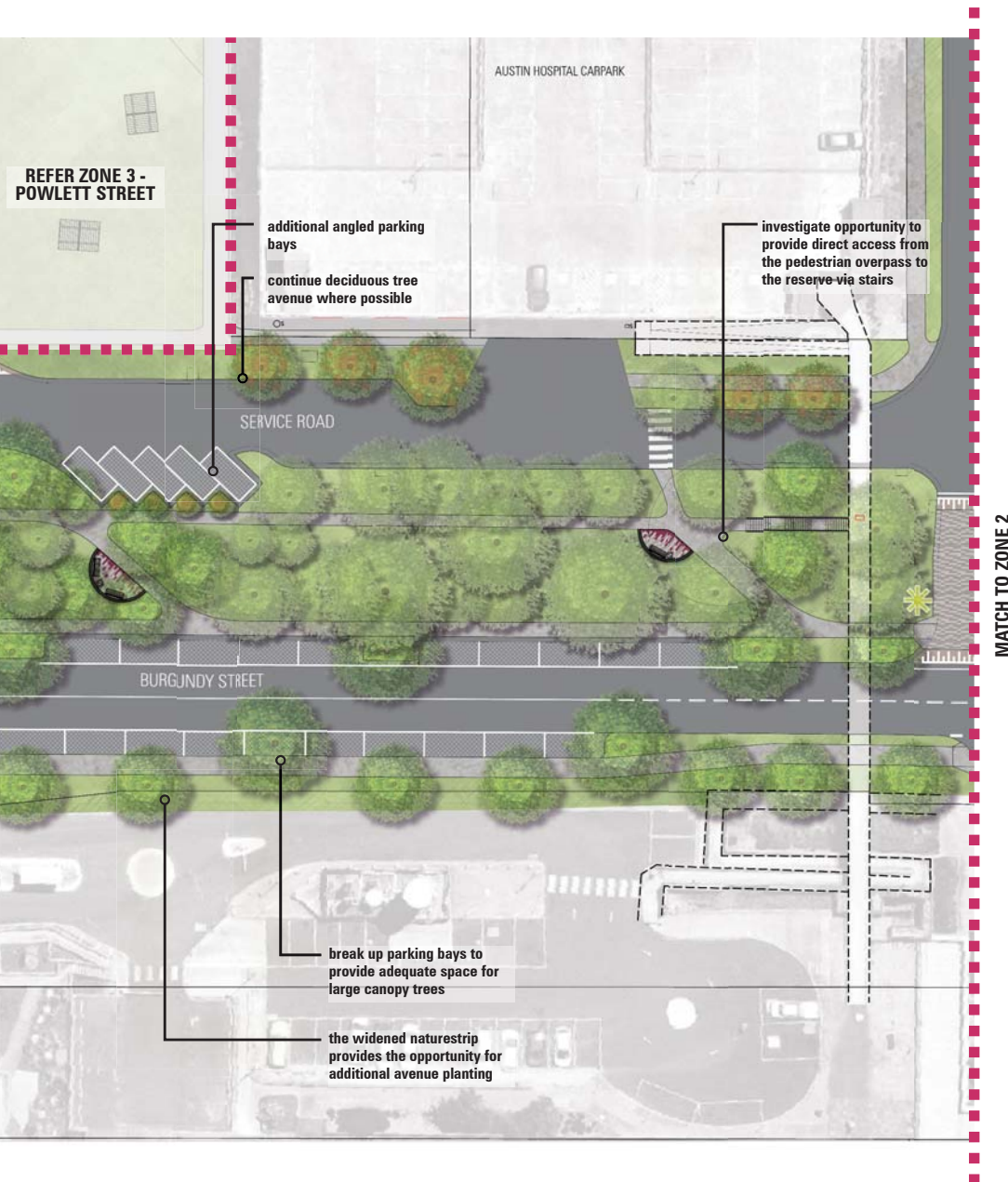
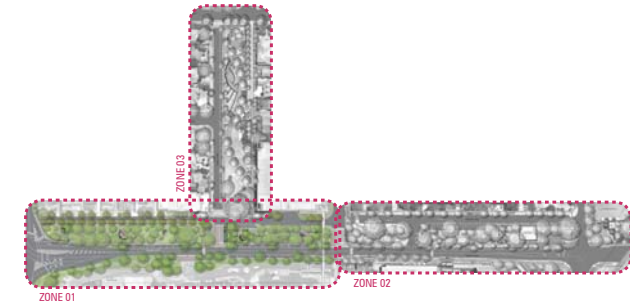


2.1 Zone 1- Burgundy Street West- Upper Heidelberg Road to Martin Street





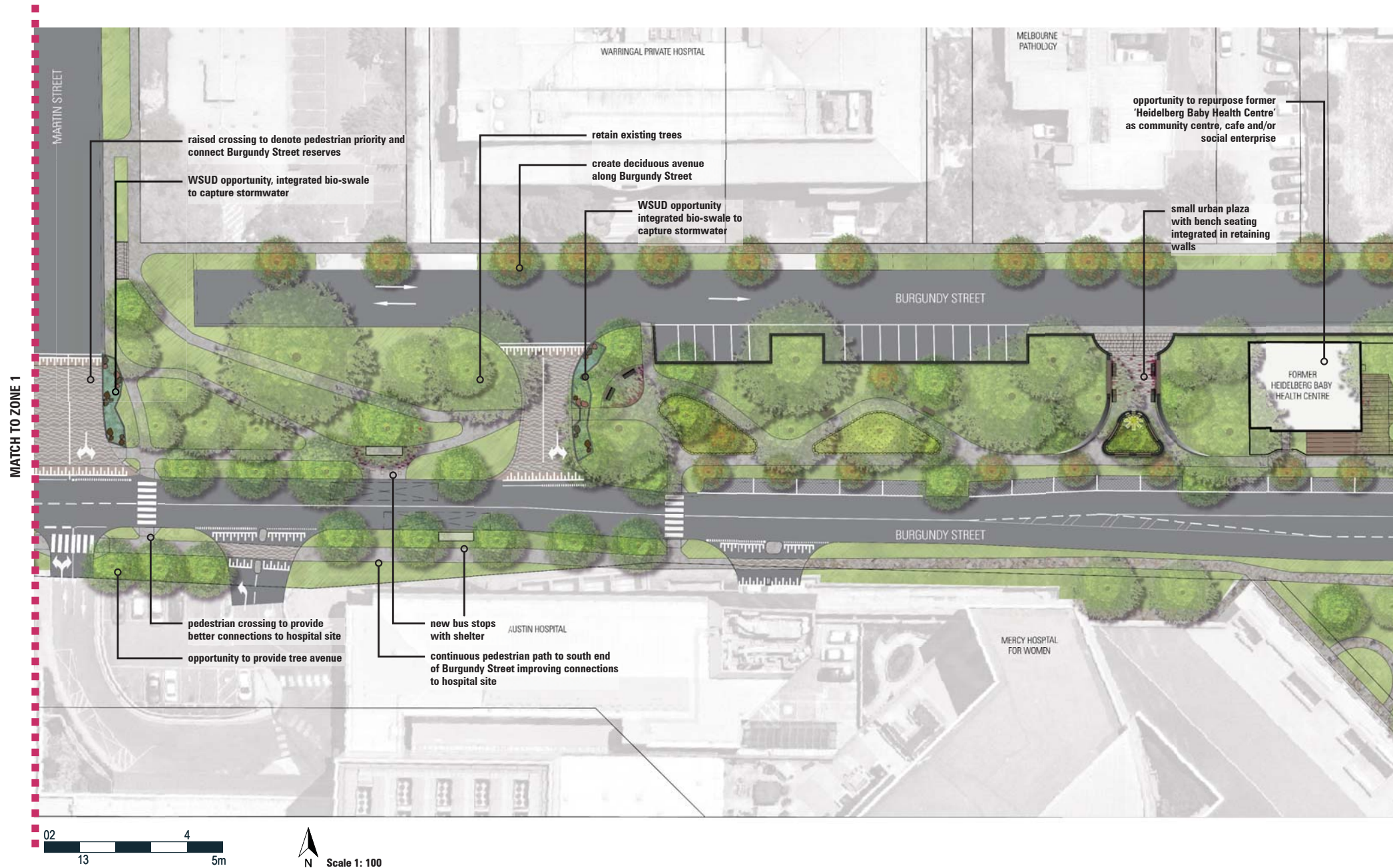
KEY PLAN

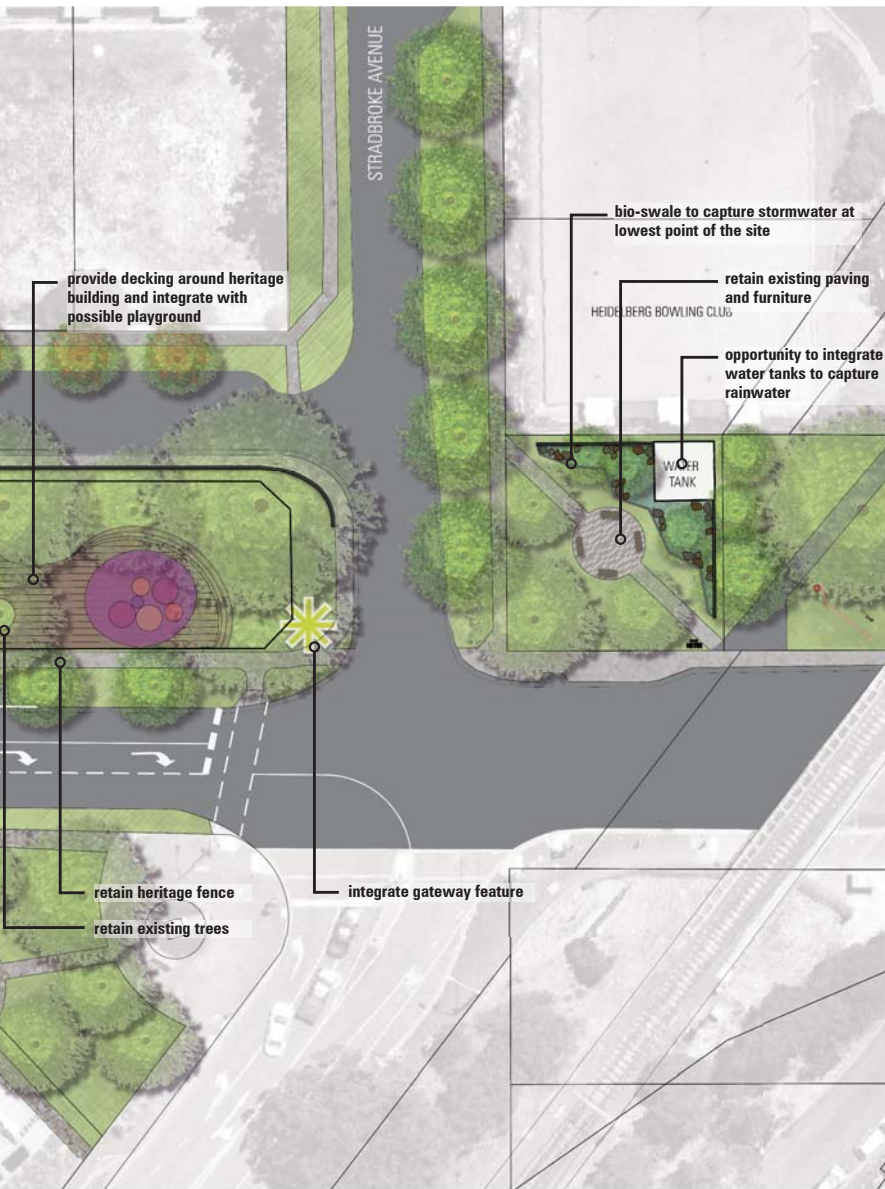


KEY PRINCIPLES

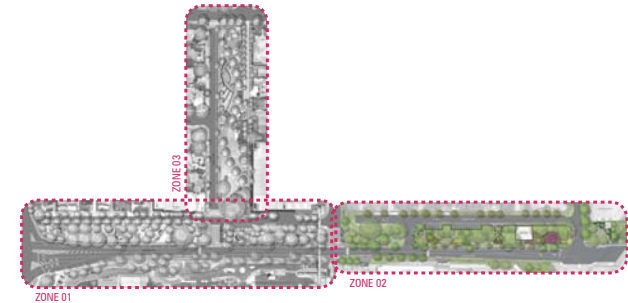
- Support the proposal to retain Burgundy Street as a two-way road, redesigning to increase parking capacity and review reducing the road speed (40km/hr) to emphasise pedestrian priority.
- Improve the walkability and accessibility of the reserves by addressing the steep slopes and provide all abilities access where possible.
- Improve public gathering spaces in Burgundy Street to make it more accessible.
- Improve connectivity between reserves by providing raised, pedestrian priority crossings.
- Improve access between the reserves and the western side of Burgundy Street by providing safer pedestrian crossings and reducing the road speed of Burgundy Street to emphasise pedestrian priority.
- Review the Upper Heidelberg Road and Burgundy Street intersection to improve pedestrian priority and access - with the potential for a dedicated crossing at the slip lane and priority bicycle/pedestrian movements and lights.
- Encourage new gateway elements to improve the identity of Heidelberg Activity Centre and medical precinct.
- Integrate bio-swales/WSUD treatments at key points along Burgundy Street to capture storm water runoff.
- Improve signage and wayfinding.
- Provide deciduous avenue along Barkly Place and Burgundy Street.

2.2 Zone 2 - Burgundy Street East - Martin Street to Stradbroke Avenue





KEY PLAN



KEY PRINCIPLES

- Support the proposal to retain Burgundy Street as a two-way road, redesigning to increase parking capacity and review reducing the road speed (40km/hr) to emphasise pedestrian priority.
- Improve public gathering spaces in Burgundy Street to make it more accessible.
- Improve connectivity between reserves by providing raised, pedestrian priority crossings.
- Improve access between the reserves and the western side of Burgundy Street by providing more safe pedestrian crossings and reducing the road speed of Burgundy Street to emphasise pedestrian priority.
- Opportunity to provide bio-swale at lowest point of the site to capture, treat and store stormwater for re-use.
- Encourage new gateway elements to improve the identity of Heidelberg Activity Centre and medical precinct.
- Improve signage and wayfinding.
- Investigate the opportunity to repurpose the former 'Heidelberg Baby Health Centre' as community centre, cafe and/or social enterprise.
- Integrate community playground to cater for both local residents as well as visitors to the medical precinct.
- Provide deciduous avenue along Burgundy Street.
- Integrate bio-swales/WSUD treatments at key points along Burgundy Street to capture storm water runoff.