



**HEIDELBERG PARK MASTERPLAN  
PHASE 2 - CONSULTATION SUMMARY**  
Prepared by Banyule City Council &  
Three Acres Landscape Architecture  
June 2022

**3 Acres**  
Landscape Architecture



Acknowledgements:

This report has been prepared by Banyule City Council with the assistance of Three Acres Landscape Architecture.

Version: 01 - June 2022

Prepared by: Joe Doak, Banyule City Council

Additional graphic assistance by: Paul Waddell, Three Acres Landscape Architecture

Three Acres Landscape Architecture  
G1 96 Pilgrim Street  
Seddon Victoria 3011  
Australia

T 0437 072 038  
E [info@threeacres.com.au](mailto:info@threeacres.com.au)  
W [threeacres.com.au](http://threeacres.com.au)

# Contents

1.0 Introduction	4
2.0 Consultation Results	5
3.0 Participants	8
4.0 Survey Results	10

# 1.0 Introduction

Phase 2 consultation for the Heidelberg Park Master Plan Project ran for a 4 week period between the 4th of April until the 2nd of May 2022.

The consultation followed the initial display of the draft masterplan and focused on community members' response. Questions included asking whether or not residents broadly supported it, and if they had any further comments or suggestions. The park boundaries are detailed in the plan below.

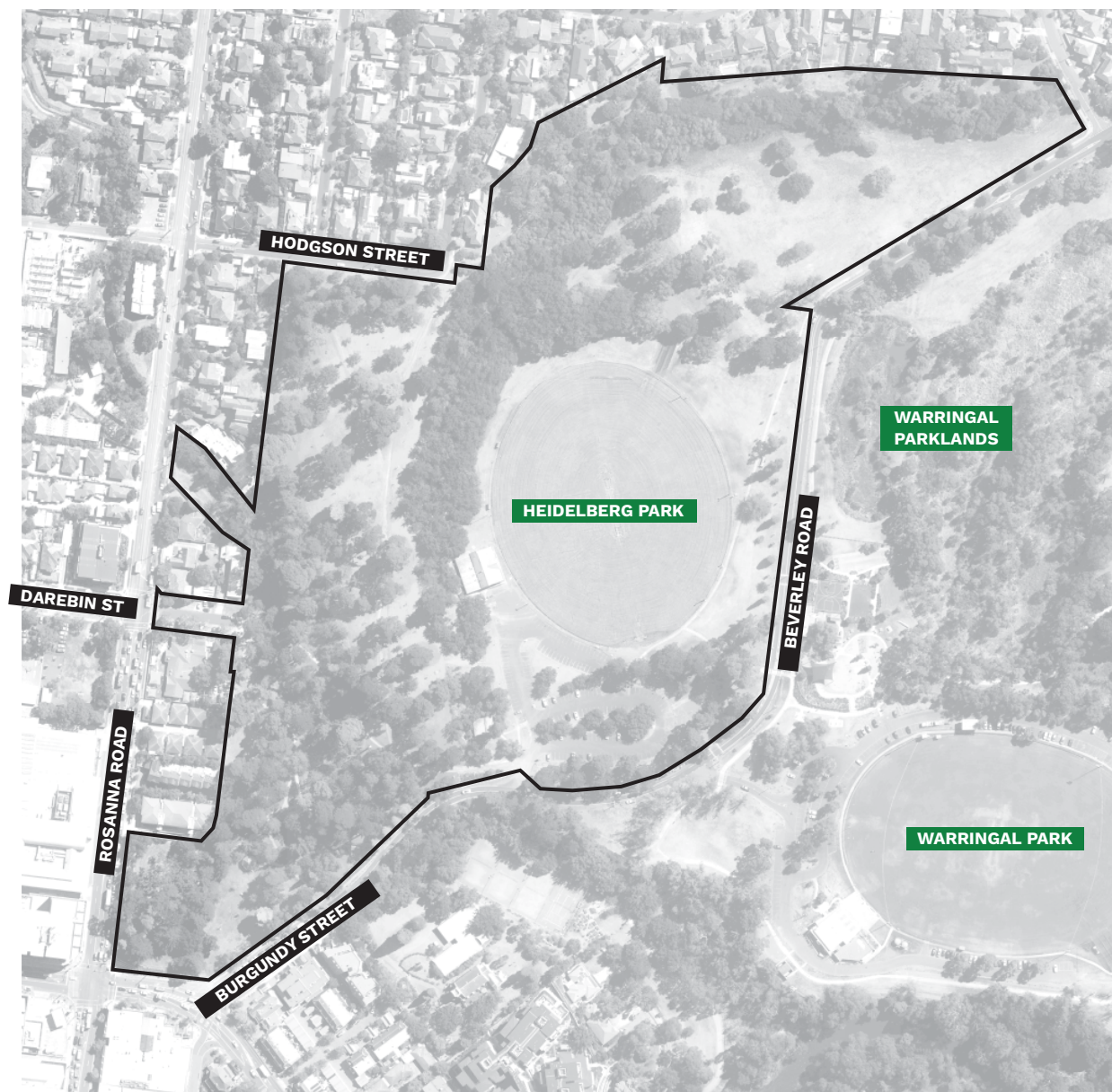


Figure 1 - Heidelberg Park Location Plan

## 2.0 Consultation Results

### 2.1 Overview

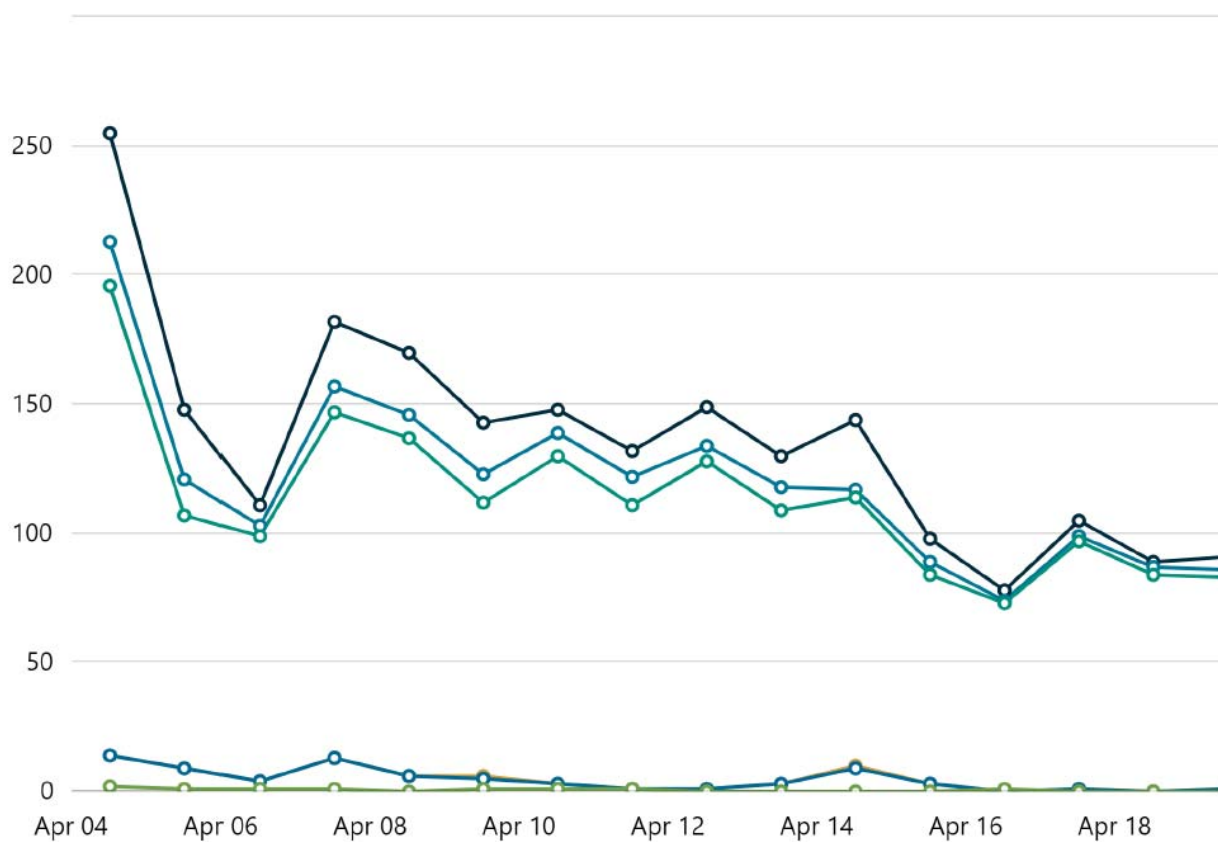
The consultation comprised:

- Councillors' briefing paper;
- Shaping Banyule page inclusive of 3 questions and a comment section;
- Thirteen (13) signs installed on site, 2 no. A1 and 11 no. A2 in size;
- Social media advertisement campaign (Facebook);
- One (1) pop-up session on Thursday the April the 21st from 10am to 12pm (Heidelberg Park adjacent Possum Hollow playground); and
- Opportunity for written submissions to be submitted.

### 2.2 Consultation Numbers

Key consultation metrics are listed below:

- The Heidelberg Park Masterplan campaign received a combined Facebook reach of 33,432 (number of individuals that saw any content from the page or about the page);
- The project received 3,236 views on Shaping Banyule;
- A total of 101 people left some form of feedback on Shaping Banyule;
- A total of 11 people engaged with Council officers at the pop-up session; and
- A total of 8 written submissions were submitted by 8 individuals.



**3,236**  
Views

**2,849**  
Visits

**2,672**  
Visitors

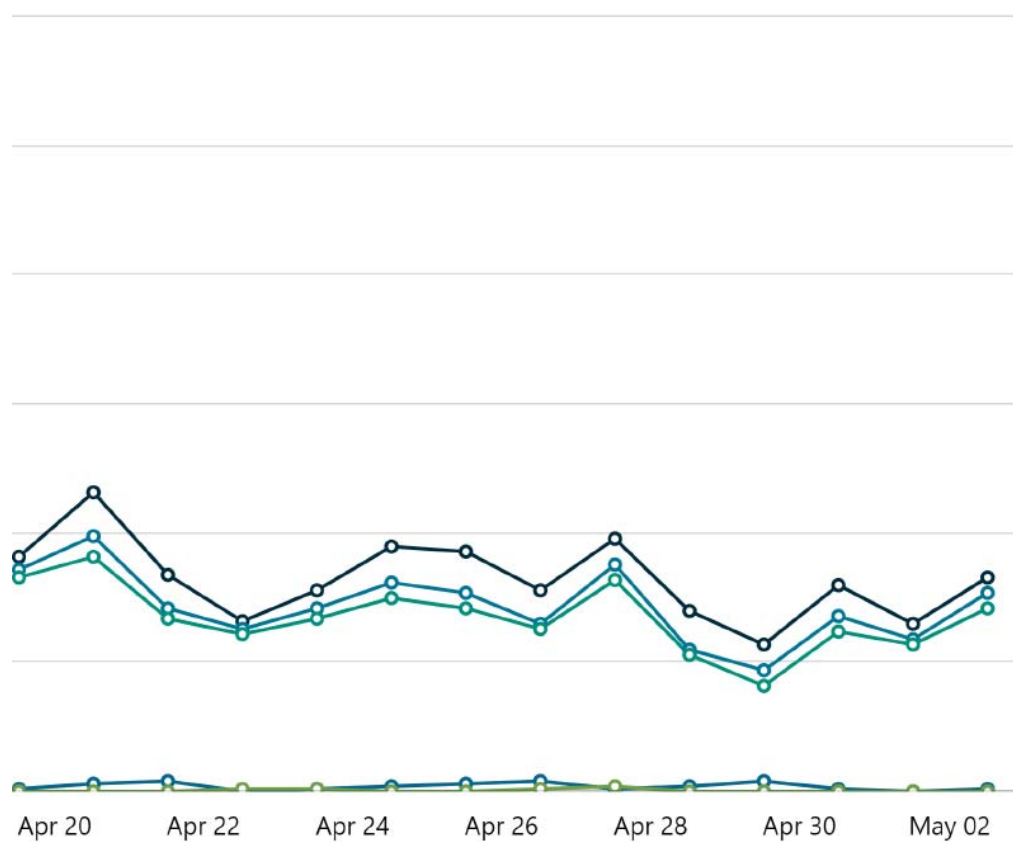
**101**  
Contributions

**99**  
Contributors

**14**  
Followers

Figure 2 - Consultation Metrics





### Key

Views - The number of times a Visitor views any page on a Site

Visits - The number of end-user sessions associated with a single Visitor

Visitors - The number of unique public or end-users to a Site. A Visitor is only counted once, even if they visit a Site several times in one day.

Contributions - The total number of responses or feedback collected through the participation tools.

Contributors - The unique number of Visitors who have left feedback or Contributions on a Site through the participation tools.

Followers - The number of Visitors who have 'subscribed' to a project using the 'Follow' button.

Figure 2 - Consultation Metrics

# 3.0 Participants

## 3.1 Gender

Of the 99 contributors, 58% of those who provided feedback were female, 39% were male, 1% were non-binary/gender fluid, 2% preferred not to identify gender. Figure 3 details the gender of those who participated in the survey.

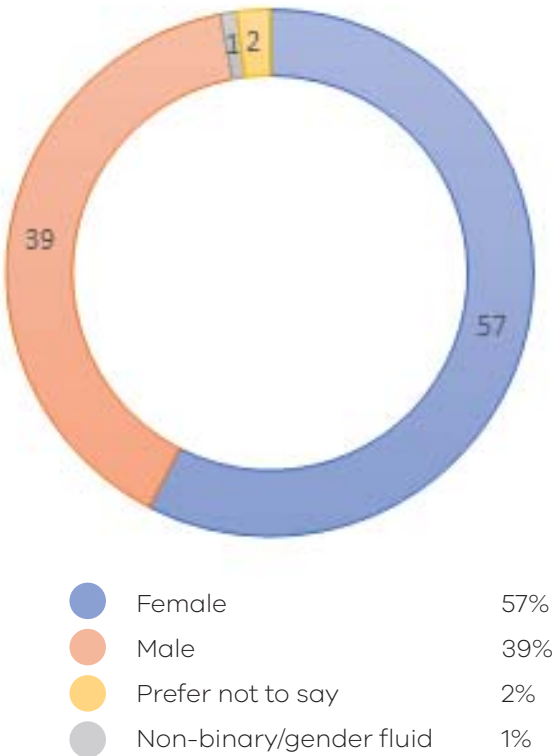


Figure 3 - Participant Gender

## 3.2 Age

The age of those who completed the survey is detailed in Figure 4. Age cohorts were relatively well represented with the exception of those aged 25 years or younger. The majority of those completing the survey were aged between 35 to 44 years (31.6%).



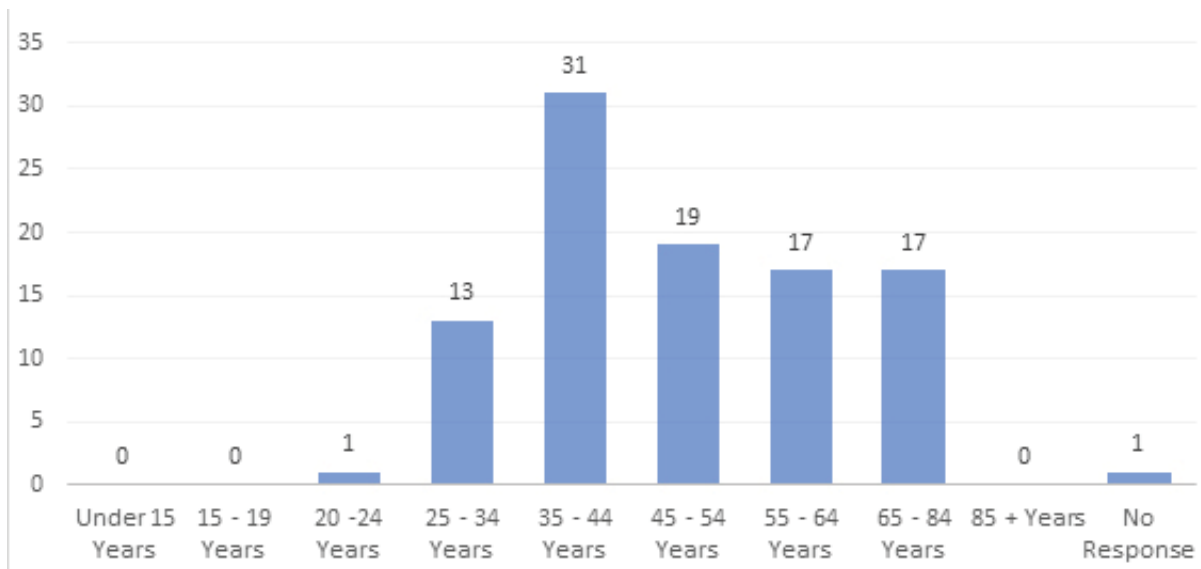


Figure 4 - Participant Age Groups

### 3.3 Resident locations

Figure 5 details the suburb where those completing the survey resided. Residents living in Heidelberg constituted 35% of total survey participants (35 individuals), followed by residents living in Rosanna which constituted 20% (20 individuals). No feedback was received from residents living in Bellfield, Briar Hill, Eltham, Eltham North, Ivanhoe East, Lower Plenty or St Helena.

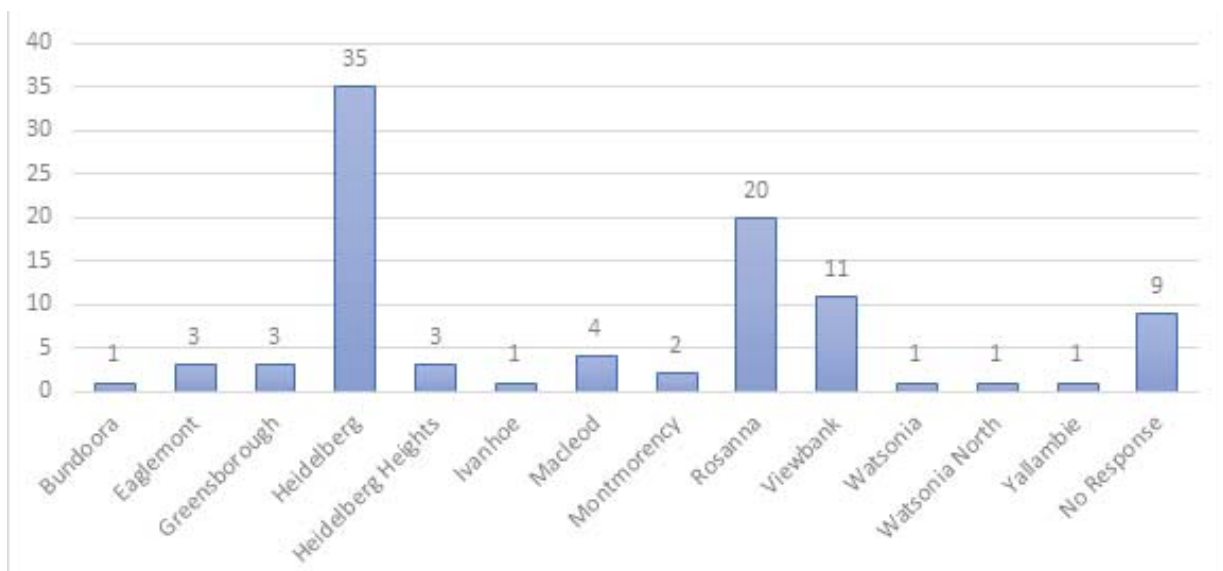
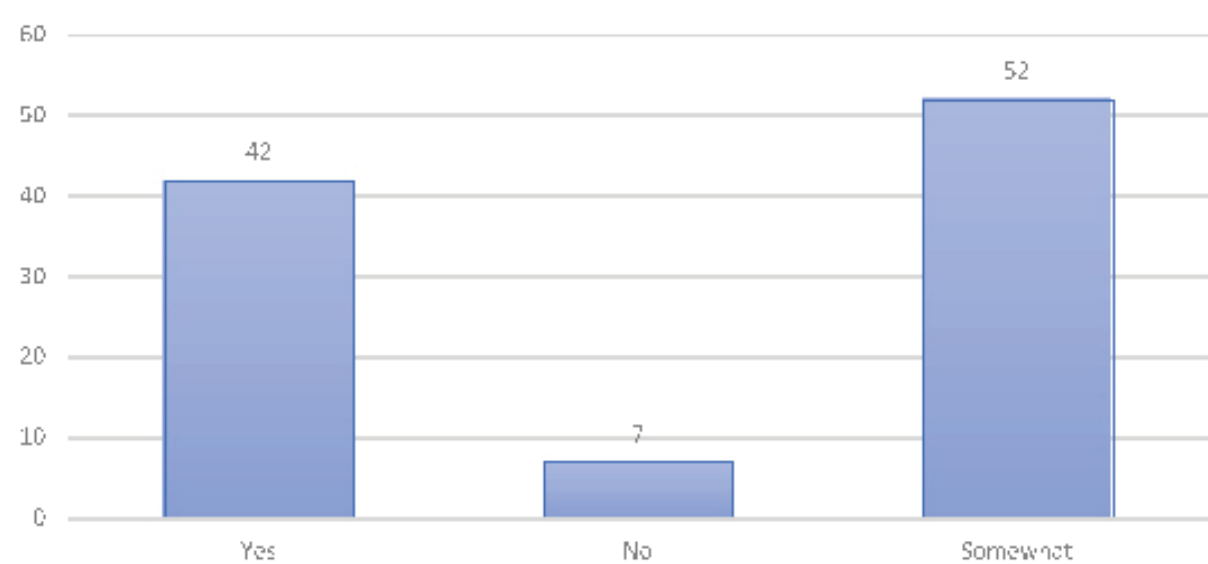


Figure 5 - Participant Resident Locations by Suburb

# 4.0 Survey Questions

## 4.1 Question 1. Do you agree with the draft Heidelberg Park Masterplan?

Poll participants were asked if they support the Heidelberg Park. Options were; yes, no or somewhat. The vast majority of those completing the poll either supported or somewhat supported the master plan (93%).



Do you agree with the draft Heidelberg Park Masterplan?

Figure 6 - Question 1

## 4.2 Question 2. What have we missed?

In total 56 responses were received detailing ideas that they believe have been excluded in the draft Heidelberg Park Master Plan (49 contributions did not address this question). Many of these themes did not differ from previous consultation rounds.

Common themes included:

- Installation of additional rubbish bins, dog waste bins and better maintenance of these facilities.
- Installation of additional facilities including seating, tables, shelters, drinking fountains and lighting.
- Installation of a cultural/education trail that interprets Aboriginal and European heritage.
- Installation of play facilities and playground.
- Installation of an aquatic centre and water play.
- Installation of youth facilities including skate park, bike jumps and bike/scooter track.
- Improvements to paths inclusive of separating bikes and pedestrians, increasing width and reducing speed.
- Installation of a fenced dog off-lead park.
- Installation of improved lawn areas.
- Restoration and additional planting of indigenous vegetation.
- Installation of additional trees and pruning works where necessary.
- Improving safety in/around the car park, lower speed limit along Beverley Road, installation of traffic calming devices and installation of fencing adjacent roads.
- Upgrading the existing sporting facilities and scoreboard.
- Maintaining the site as is, do not over develop and ensure space is provided for passive/unstructured recreation.
- Do not remove any car parking.
- Add another playground.
- Add more path lighting.

## 5.0 Additional Feedback

### 5.1 Additional written feedback via email:

In total 8 written submissions were received from 8 individuals. Whilst submissions varied, key themes included:

- Improved shared path signage to minimise pedestrian and cyclist conflict.
- Separating cyclists and pedestrians through separate dedicated paths.
- Assessment of environmental weeds and implementation of weed control programs, particularly along Salt Creek and the indigenous escarpment (action item 29).
- Add more path lighting, particularly along the shared user path.
- Installation of historical signage and reinstallation of tree species labels.
- Better location of picnic areas that allow disability access and closer to existing facilities.
- To leave the parklands in as natural a state as possible.
- Opposed to the proposed action to include a picket fence around the oval.
- Not to re-vegetate with weedy species or potentially weedy species.
- Further consideration of remnant native vegetation.