



**HEIDELBERG PARK MASTERPLAN  
PHASE 3 - CONSULTATION SUMMARY**  
Prepared by Banyule City Council &  
Three Acres Landscape Architecture  
November 2022

**3 Acres**  
Landscape Architecture



Acknowledgements:

This report has been prepared by Banyule City Council with the assistance of Three Acres Landscape Architecture.

Version: 01 - November 2022

Prepared by: Joe Doak, Banyule City Council

Additional graphic assistance by: Paul Waddell, Three Acres Landscape Architecture

Three Acres Landscape Architecture  
G1 96 Pilgrim Street  
Seddon Victoria 3011  
Australia

T 0437 072 038  
E [info@threeacres.com.au](mailto:info@threeacres.com.au)  
W [threeacres.com.au](http://threeacres.com.au)

# Contents

1.0 Introduction	4
2.0 Consultation Results	5
3.0 Survey Questions	7
4.0 Additional Feedback	9



# 1.0 Introduction

Phase three consultation for the Heidelberg Park Master Plan Project ran for a 4 week period between 18th of July until the 15th of August 2022.

The consultation represents the second time the draft master plan was displayed to the public and focused on asking whether or not residents broadly supported it and if they had any suggestions, in a more simplified format.

The park boundaries are detailed in the plan below.

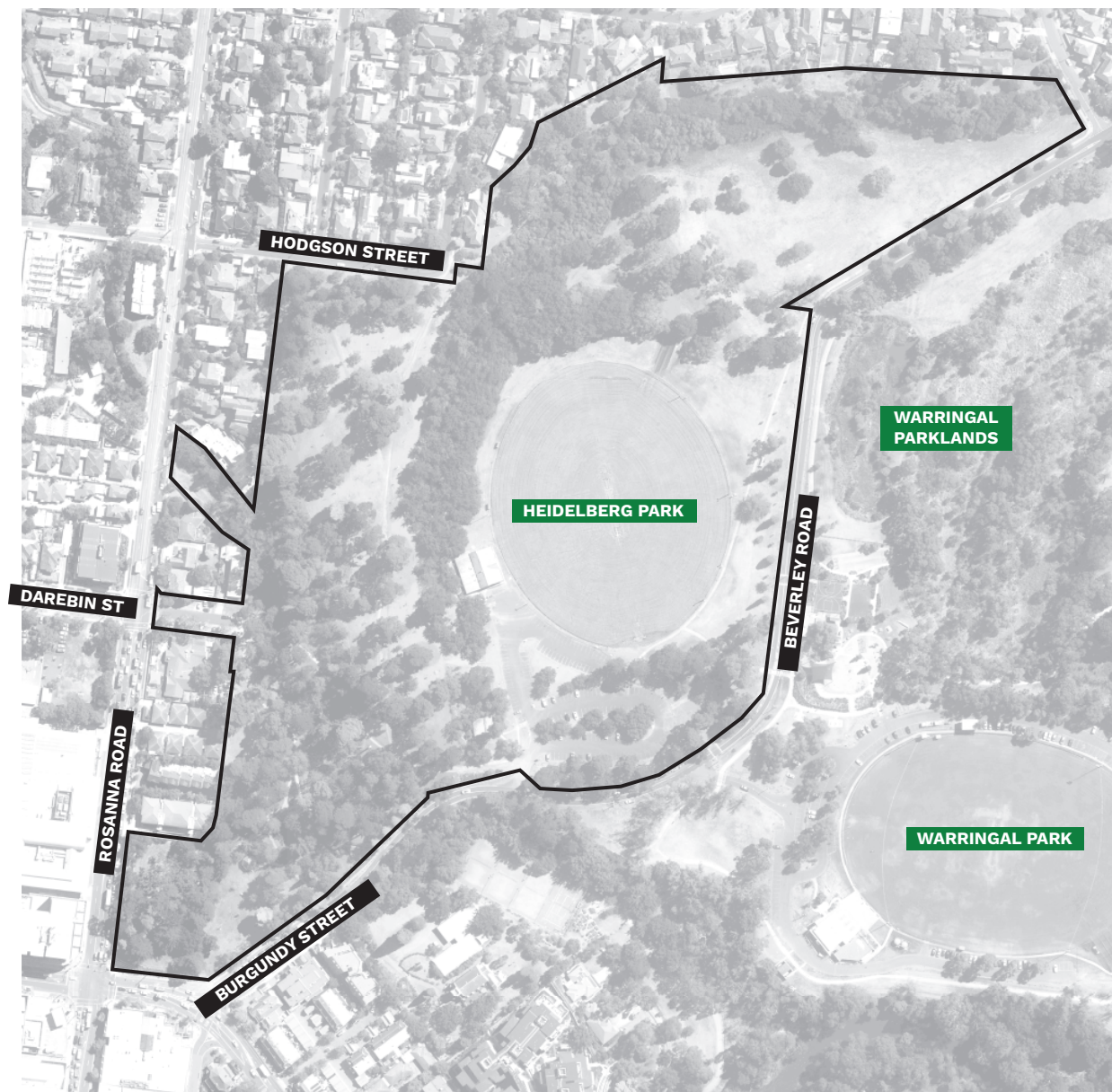


Figure 1 - Heidelberg Park Location Plan

# 2.0 Consultation Results

## 2.1 Overview

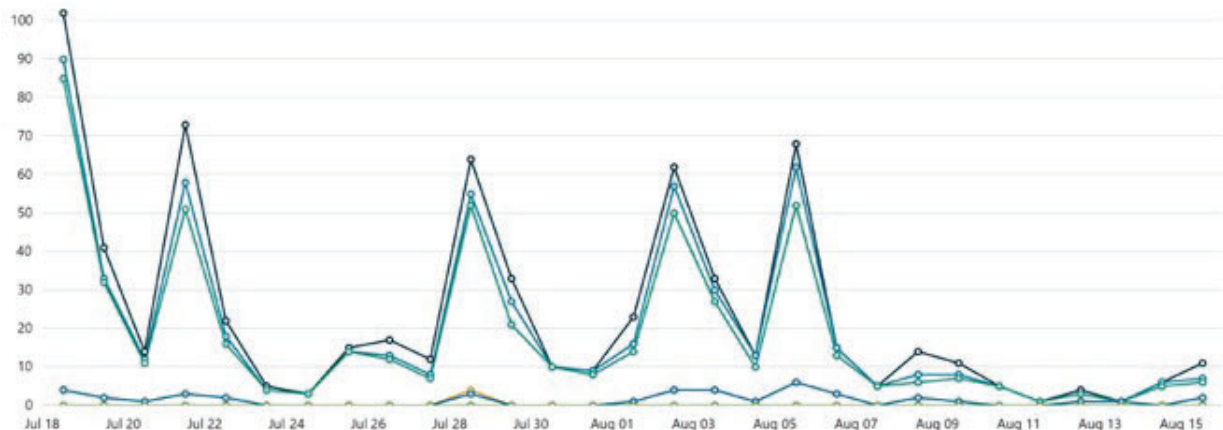
The consultation comprised:

- Shaping Banyule page, including 1 question and a comments section; &
- Opportunity for written (email or letter) submissions to be submitted.

## 2.2 Consultation Numbers

Key consultation metrics are listed below:

- The project received 692 views on Shaping Banyule;
- A total of 42 people left some form of feedback on Shaping Banyule; &
- A total of 2 written submissions were submitted by 2 individuals (1 was a duplicate comment from shaping Banyule).



**692**  
Views

**591**  
Visits

**531**  
Visitors

**42**  
Contributions

**41**  
Contributors

**0**  
Followers

### Key

Views - The number of times a Visitor views any page on a Site

Visits - The number of end-user sessions associated with a single Visitor

Visitors - The number of unique public or end-users to a Site. A Visitor is only counted once, even if they visit a Site several times in one day.

Contributions - The total number of responses or feedback collected through the participation tools.

Contributors - The unique number of Visitors who have left feedback or Contributions on a Site through the participation tools.

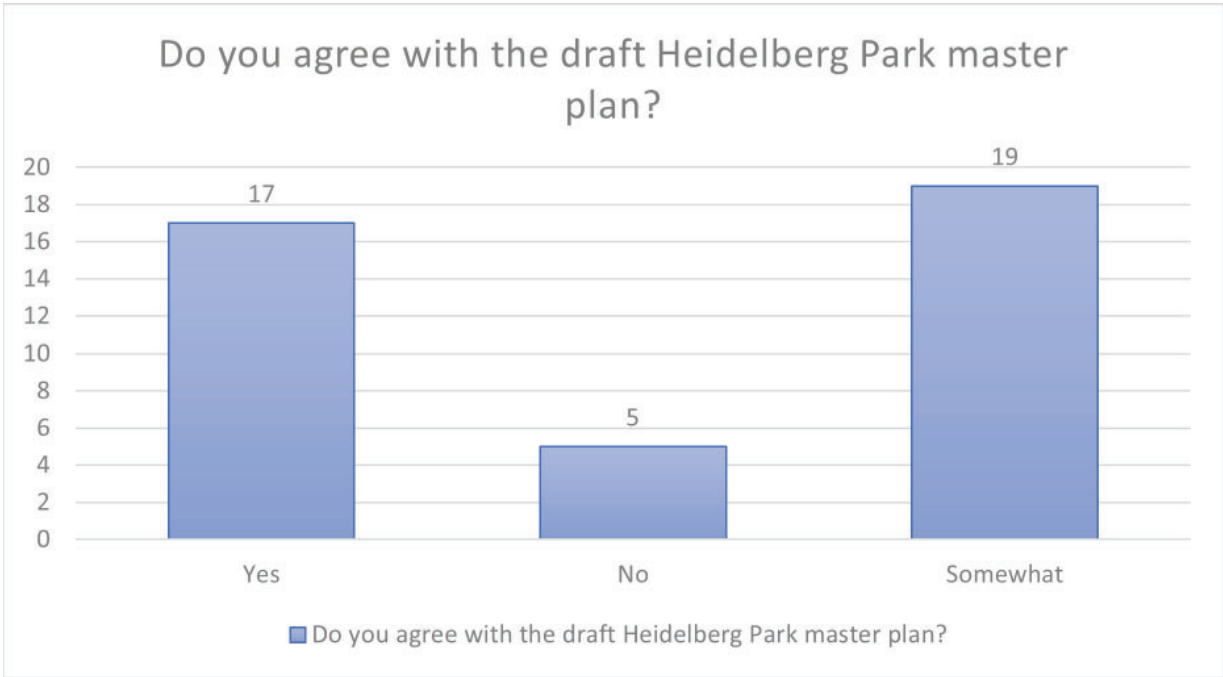
Followers - The number of Visitors who have 'subscribed' to a project using the 'Follow' button.

Figure 2 - Consultation Metrics

# 3.0 Survey Questions

## 3.1 Question 1. Do you agree with the draft Heidelberg Park Masterplan?

Poll participants were asked if they support the Heidelberg Park draft masterplan. Options were; yes, no or somewhat. The vast majority of those completing the poll either supported or somewhat supported the master plan (87%).



## Do you agree with the draft Heidelberg Park Masterplan?

Figure 3 - Question 1

### 3.2 Question 2. What have we missed?

In total, 33 responses were received detailing ideas that they believe have been excluded in the draft Heidelberg Park Master Plan (11 contributions did not address this question). Many of these themes did not differ from previous consultation rounds.

Common themes included (no. of mentions):

- Approval of master plan (5)
- Don't over develop/embellish (3)
- Keep the white picket fence action item (2)
- Remove proposed picnic area near Brown Street (2)
- Park name confusion with Warringal Park (2)
- Include bike jumps (1)
- Remove bikes from the road and onto shared paths (1)
- Create shared path on Burgundy St, west of Lower Heidelberg Rd (1)
- Do not install Aboriginal signage (1)
- Eastern end of Darebin St should be made a shared path (1)
- Improve south/western access to park from Burgundy Street (1)
- Install botanical name plaques (1)
- Install recycle bins (1)
- Install more bins (1)
- Lighting at Beverley Road crossing (1)
- Make it more safe (1)
- More accessible (1)
- More artwork (1)
- More indigenous planting (1)
- More shelter (1)
- More tree planting (1)
- More youth facilities such as skate, netball/basketball court etc (1)
- New oak escarpment path won't be as fun as proposed path (1)
- Not effective consultation (1)
- Only upgrade oval (1)
- Remove agapanthus (1)
- Separated walking & cycling paths in high use areas (1)
- Keep the roses and crepe myrtles along Jika Street (1)
- Upgrade to the toilet block (1)
- Use solar lighting (1)
- Retain existing exotic species (1)



## 4.0 Additional Feedback

### 4.1 Additional written feedback via email:

In total, 2 written submissions were received from 2 individuals. 1 email was a duplicate comment made in the shaping Banyule survey by the same individual. The 1 unique email mentioned a desire to focus on European and Colonial history.

### 4.2 Consultation Summary - Key Data

Category	Phase 1 (Aug-Oct21)	Phase 2 (Apr-May22)	Phase 3 (Jul-Aug22)	Total
Shaping Banyule Consultation Total Views	1,235	3,236	692	<b>5,163</b>
Shaping Banyule Consultation Contributors	339	101	42	<b>482</b>
Emails	13	8	2	<b>25</b>