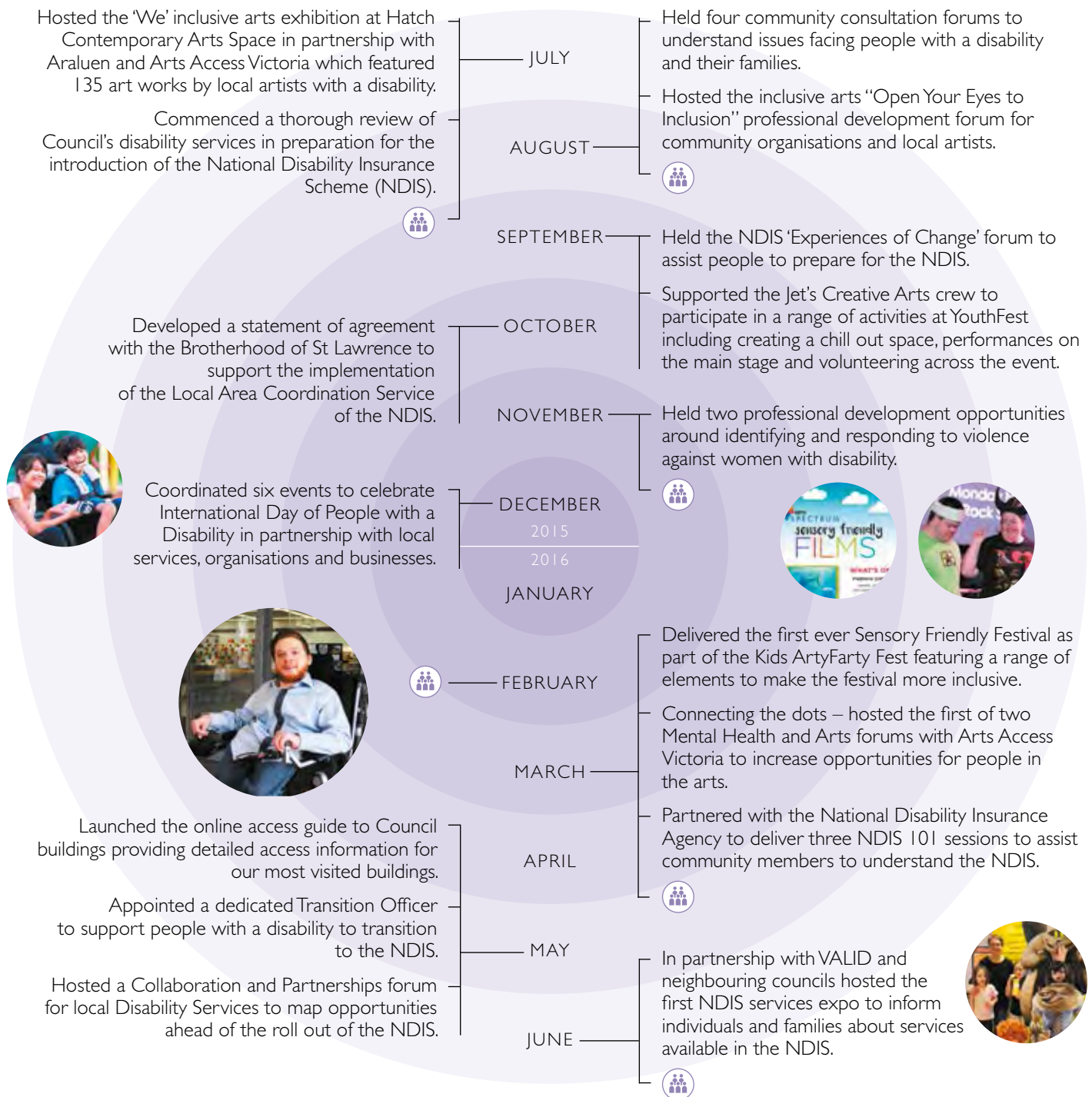




HIGHLIGHTS FROM THE 2015/16 DISABILITY ACTION PLAN

OUR 2015/16 DISABILITY ACTION PLAN CONTAINED 18 ACTIONS WITH COUNCIL ACHIEVING 89% OF THEM. HERE IS A SNAPSHOT OF THE YEAR'S ACTIONS AND ACHIEVEMENTS.



ACTIVITIES THAT RAN ALL YEAR

- Partnered with La Trobe University to actively screen children for developmental and social indicators of Autism to assist in early intervention.
- Provided an innovative arts program for young people aged 12 – 25 years with a disability through our Jets Creative Arts facility.
- Provided in home support and respite services to over 300 people with a disability.
- In partnership with Greensborough Hoyts Cinema held seven sensory friendly film sessions across the year.

