

7.4 Direction 03: Green and Open Spaces

Initiative 3.1

Facilitate social interaction, healthy living and reinforce community hubs by providing an attractive, safe and integrated network of public and open spaces.

- **Action 3.1.1 (Local Hub)** – Improve James Reserve to include facilities that enhance its role as a local recreation hub, including family-oriented amenities such as playgrounds and picnic tables and advocate for open spaces within the Repatriation Hospital to maintain, improve and become more accessible for the local community.
- **Action 3.1.2 (Civic Hub)** – Convert small open spaces at the intersection of Burgundy Street and Stradbroke Avenue into a node and civic hub for the Precinct, providing a more useable space for the broader community.
- **Action 3.1.3 (Transport Hub)** – Redevelop the area around Mount Street and the bus interchange to include facilities that enhance its role as a transport hub connected to Austin Hospital and Burgundy Street activity centre. This should include better integration between buses on Mount Street and Heidelberg Rail Station, additional parkiteer, and wider pedestrian footpaths for pedestrians accessing buses.
- **Action 3.1.4 (Neighbourhood Hub)** – Integrate and improve open spaces north and south of Austin Hospital to include facilities that enhance their role as a neighbourhood recreational hub, providing a distinctive and functional recreational walk interconnecting all spaces and Implement the Heidelberg Central and Powlett Reserve master plans.
- **Action 3.1.5 (Cultural Hub)** – Consider the Car Park Sites: Concept Plans & Feasibility Study (2010) to convert Council-owned properties between Burgundy, Cape, Yarra and Hawdon Streets into civic spaces, providing amenities for visitors and students and connecting St. John's Primary School, Our Lady of Mercy College and Heidelberg Primary School.
- **Action 3.1.6 (Regional Hub)** – Improve Heidelberg Park, Heidelberg Gardens and Yarra River frontage to include facilities that enhance its regional recreational hub and environmental roles.

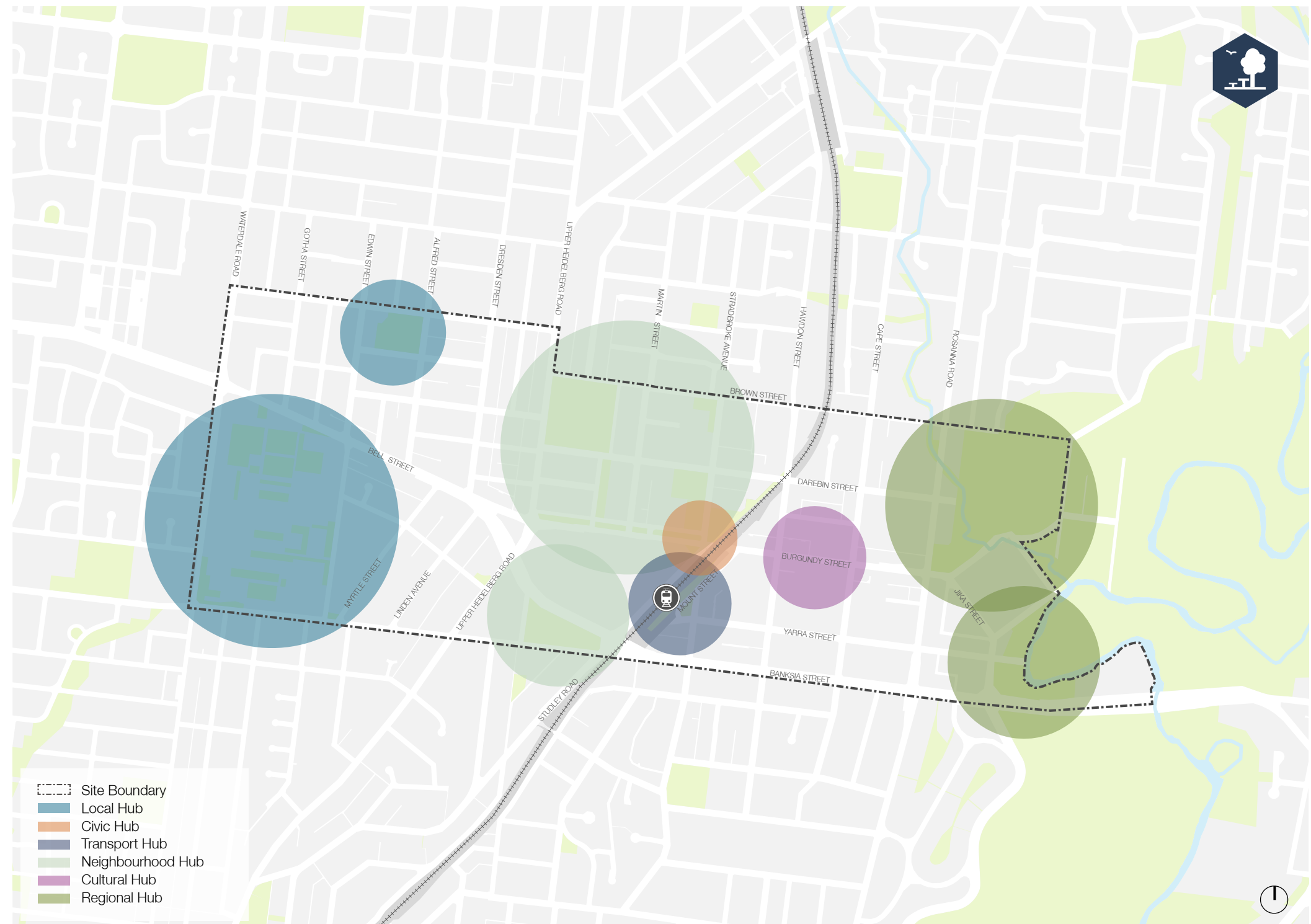


Figure 76: Green and Open Spaces - Initiative 3.1 Map

Initiative 3.2

Increase the diversity of recreational opportunities and experiences by varying the purpose and character of spaces in the Precinct.

- Action 3.2.1 – Plan for the provision of open space facilities regarding local needs as well as other spaces in nearby areas to minimise duplication and provide more diverse recreational opportunities.
- Action 3.2.2 – Use small open spaces that have a relatively low-profile and few heritage constraints, such as Burgundy Road Reserve and Powlett Street Reserve, as places to experiment with innovative design and types of facilities that expand the range of local recreational opportunities.

Initiative 3.3

Encourage the use of underutilised public and private open spaces for local community use, especially within hospitals.

- Action 3.3.1 – Advocate for the development of a master plan for the Repatriation Hospital.
- Action 3.3.2 – Investigate options for replacement of the existing Austin Hospital bridge with a ‘green bridge’, providing additional green infrastructure for the hospital, as well as improved pedestrian connection and DDA compliant access to car parking and open space.

- Site Boundary
- Existing Open Spaces
- Area 1
- Area 2
- Area 3
- Area 4
- Area 5
- Area 6
- Potential Master Plan
- Austin Hospital Bridge

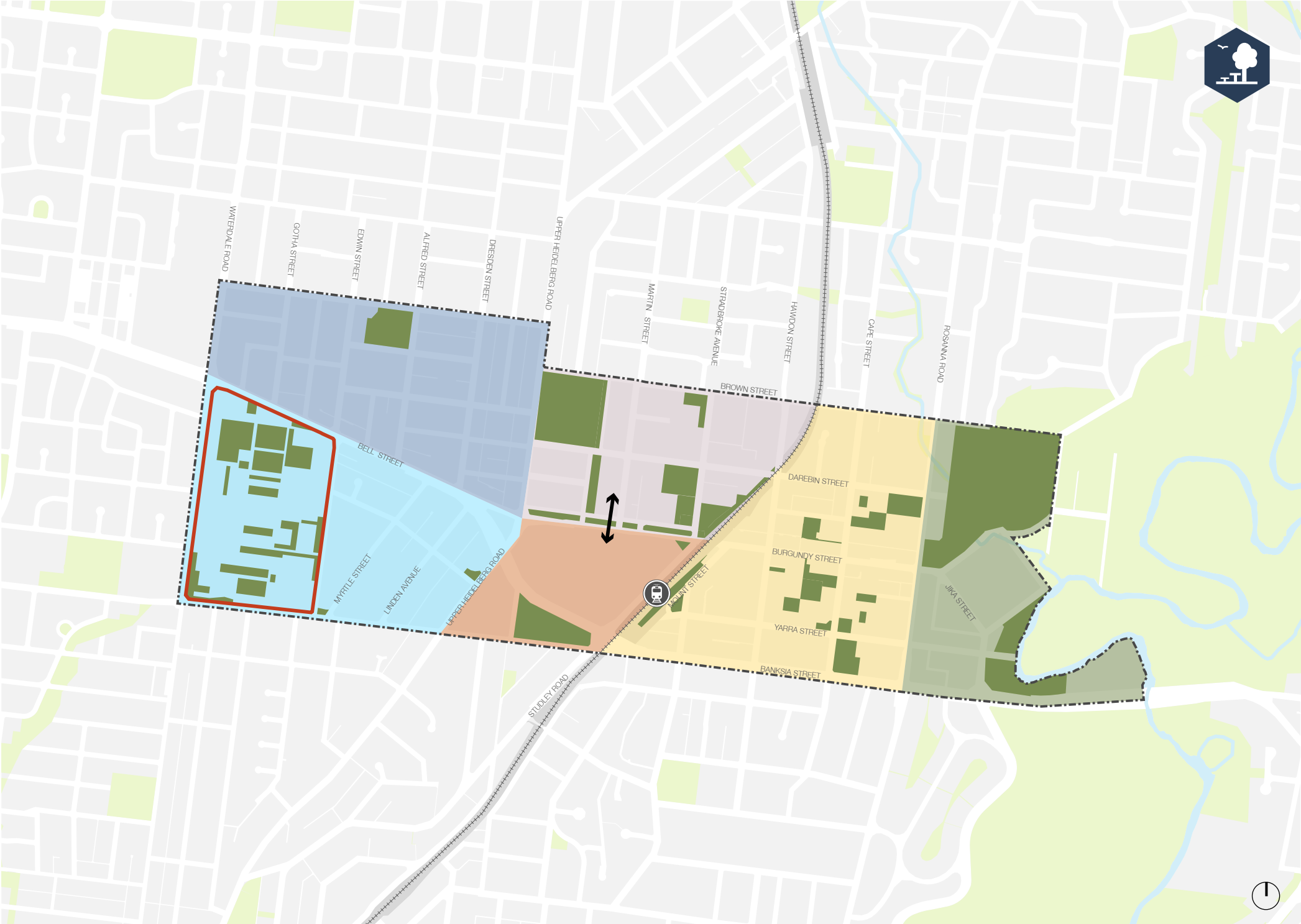


Figure 77: Green and Open Spaces - Initiatives 3.2/3.3 Map

Initiative 3.4

Coordinate and integrate the designs of small reserves and open spaces to achieve a greater visual impact, create attractive walking and recreational routes and provide other recreational benefits.

- [Action 3.4.1](#) – Integrate and improve walking and recreational routes that interlink the existing open spaces to the north of Burgundy and Bell Streets.
- [Action 3.4.2](#) – Prepare a unified planting scheme to create a precinct-wide landscape character.

Initiative 3.5

Expand open spaces into road and transport reserves where possible to create more usable spaces, larger areas for planting and to allow greater infiltration of rainwater.

- [Action 3.5.1](#) – Expand and protect open spaces along the east side of the railway corridor and develop a linear park to improve wildlife habitat and pedestrian connectivity across the Precinct.
- [Action 3.5.2](#) – Redesign Burgundy, Bell, Mount and Cape Streets and Upper Heidelberg Road to expand the provision of street trees and planting.
- [Action 3.5.3](#) – Incorporate sound planting and vegetation within the proposed Burgundy Street pedestrian priority space.
- [Action 3.5.4](#) – Implement the Heidelberg Central and Powlett Reserve master plans.
- [Action 3.5.5](#) – Develop master plans for Bell, Cape and Mount Streets and Upper Heidelberg Road.

- Site Boundary
- Coordinated Design
- Expand and Protect Green Spaces
- Expand Open Space Into Roads

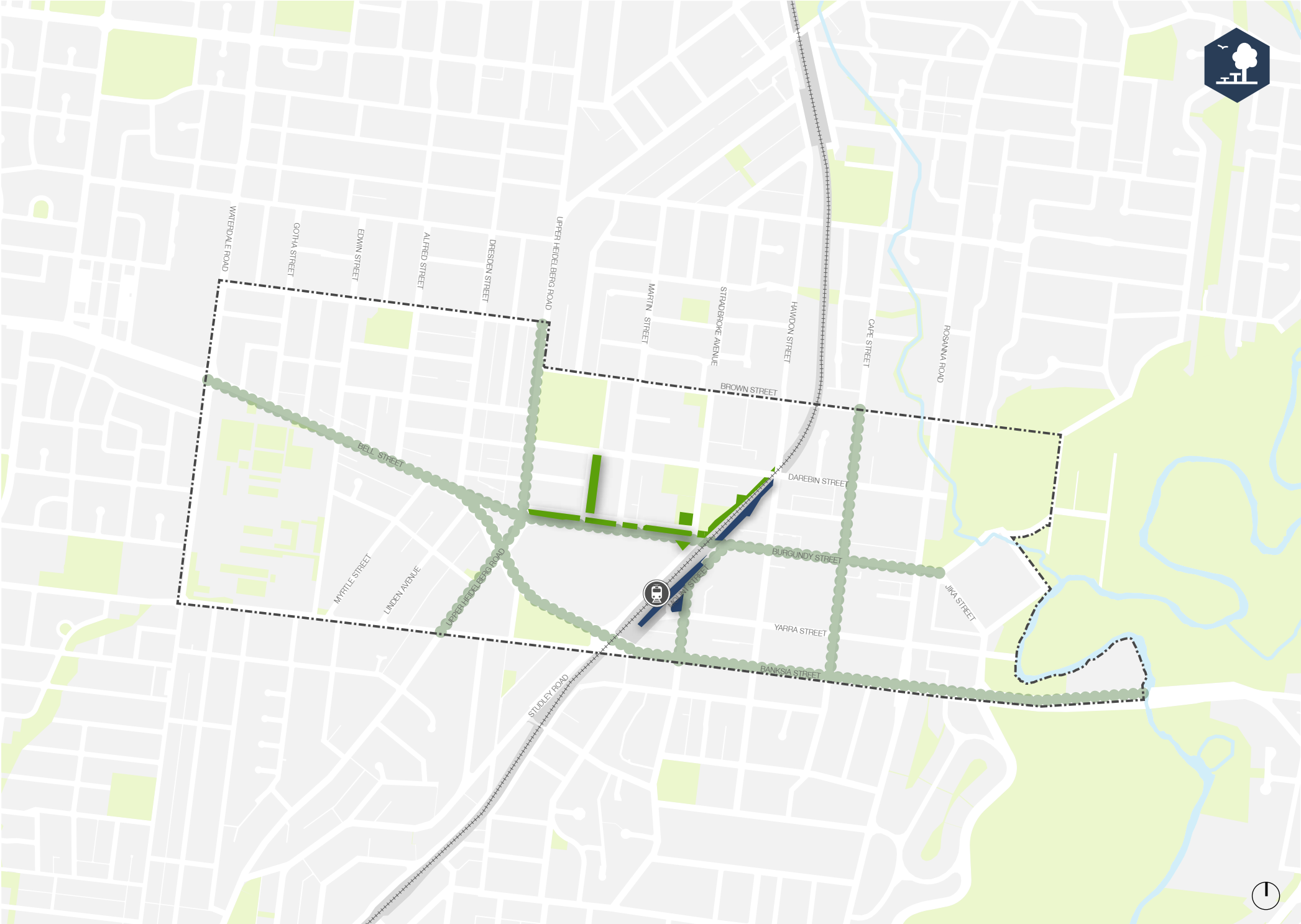


Figure 78: Green and Open Spaces - Initiatives 3.4/3.5 Map