

Rutherford Facility Audit

Document number	000207
Client / Site	Tennis Victoria
Location	96-120 Rutherford Road Viewbank VIC 3084
Auditor	Andrew Sodomaco
Audit date	28 Aug 2015

Site summary	
Total number of enclosures	5
Total number of courts	8
Total number of floodlit courts	8
Total number of enclosed mini courts	0
Hierarchy	District

Enclosure 1

Number of courts in enclosures	2
Court size	full
Are there any enclosed mini courts? If so, how many?	0
Surface type in enclosure	Red Porous
Court base in enclosure	Crushed rock / scoria
Overall base rating	Good

Courts

Condition


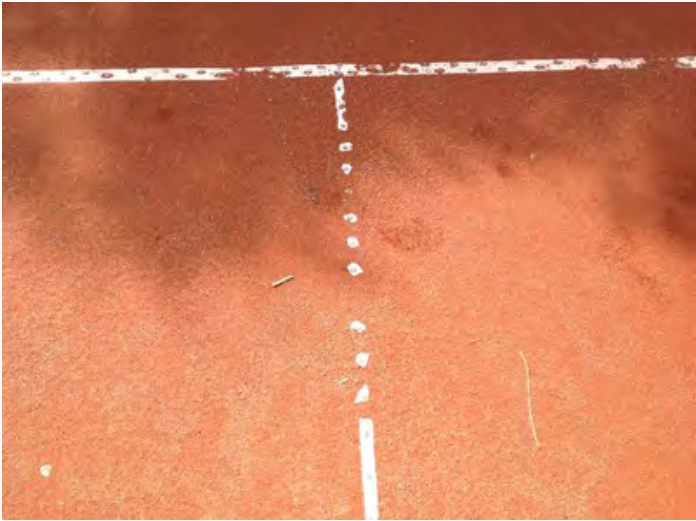
Unique court number	1
Surface condition rating	Good
	Issues/Observations:
Surface type	Red Porous
Surface life span	10+ years
Court condition notes	This court appears to be in very good condition. There is little sign of puddling and few signs of aggregate showing through the top dressing. There is a small patch of erosion on the south western singles sideline which will need to be repaired.

Court condition photos



Line marking

Line marking description	Tennis only lines
--------------------------	-------------------

Line marking rating	Moderate
	Issues/Observations: Cracked Torn Inconsistent bounce likely
Line marking condition notes	The court lines are standard for a red porous court and are nailed into the surface. They are a little aged but otherwise do not appear to be cracked or broken, except where this has occurred quite extensively in the north eastern corner of the court.
Line marking condition photos	
	
Net posts	
Net post type	Round galvanised - Installed directly into pavement
Net post condition	Good
	Issues/Observations: Straight
Net post winders	Protruding winders
Net condition	Good
Net structure	Tethered to the posts : yes Centre strap fitted: yes
Net post life span	10+ years
Net life span	6-10 years
Net / post notes	
Net / post photos	
No photos taken	
Court compliance	

Is the court run off compliant?	no Runoffs North: 4800m South: 4800m East: 3700m West: 3700m
Could the court be made compliant?	no
Is the court to the standard dimensions?	yes
Court orientation	North-south
Are netball goal posts outside tennis court run off areas?	no
Are lockable post hole covers fitted and safe?	no
Compliance notes	The court is not run off compliant to the north or south behind the baselines.
Compliance photos	



Courts

Condition

Unique court number	2
Surface condition rating	Good Issues/Observations:
Surface type	Red Porous
Surface life span	10+ years
Court condition notes	This court appears to be in very good condition. There is little sign of puddling and few signs of aggregate showing through the top dressing. There is an area of erosion on the southern baseline which needs to be rectified as it poses a trip hazard.
Court condition photos	



Line marking

Line marking description	Tennis only lines
Line marking rating	Moderate Issues/Observations: Inconsistent bounce likely
Line marking condition notes	The court lines are standard for a red porous court and are nailed into the surface. They are a little aged but otherwise do not appear to be cracked or broken.

Line marking condition photos



Net posts

Net post type	Round galvanised - Installed directly into pavement
Net post condition	Good Issues/Observations: Straight
Net post winders	Protruding winders
Net condition	Good

Net structure	Tethered to the posts : yes Centre strap fitted: yes
Net post life span	10+ years
Net life span	6-10 years
Net / post notes	

Net / post photos

No photos taken

Court compliance

Is the court run off compliant?	no Runoffs North: 4800m South: 4800m East: 3700m West: 3700m
Could the court be made compliant?	no
Is the court to the standard dimensions?	yes
Court orientation	North-south
Are netball goal posts outside tennis court run off areas?	no
Are lockable post hole covers fitted and safe?	no
Compliance notes	The court is not run off compliant to the north or south behind the baselines.

Compliance photos



Drainage

Drainage infrastructure	Formed
What type of drainage is in place?	Grated pit(s)

Are drains, pits or other infrastructure provided within the court enclosure?	yes
Are drains, pits or other infrastructure provided within the run-off areas?	yes
Drainage rating	Good
	Issues/Observations:
Drainage notes	Although the courts appear to drain very well, the flow of water across the surface has in some places created erosion at the back of the lines. Otherwise, there are few signs of puddling across the enclosure. The grated pit is located in the south eastern corner.

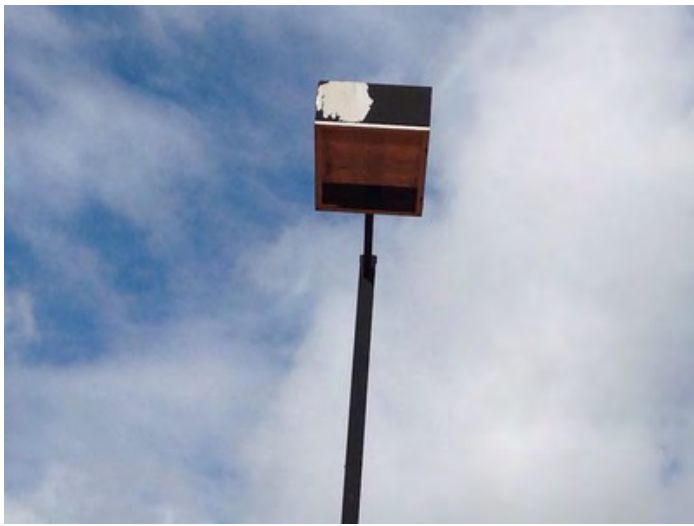
Drainage photos



Fencing

Fence type	Galvanised chain mesh
Fence Rails	Fence rail top: no Fence rail bottom: yes
Fence height	3m to 3.5m Low level side fencing installed: no
Fence attachments	Sightscreens Windbreaks
Fence condition rating	Poor Issues/Observations: Slack mesh Mesh curling at base Rusted mesh Damaged mesh Excessive gap under fencing - allows balls to escape enclosure Trees overhanging enclosure Trees/shrubs growing through mesh
Fencing life span	6-10 years

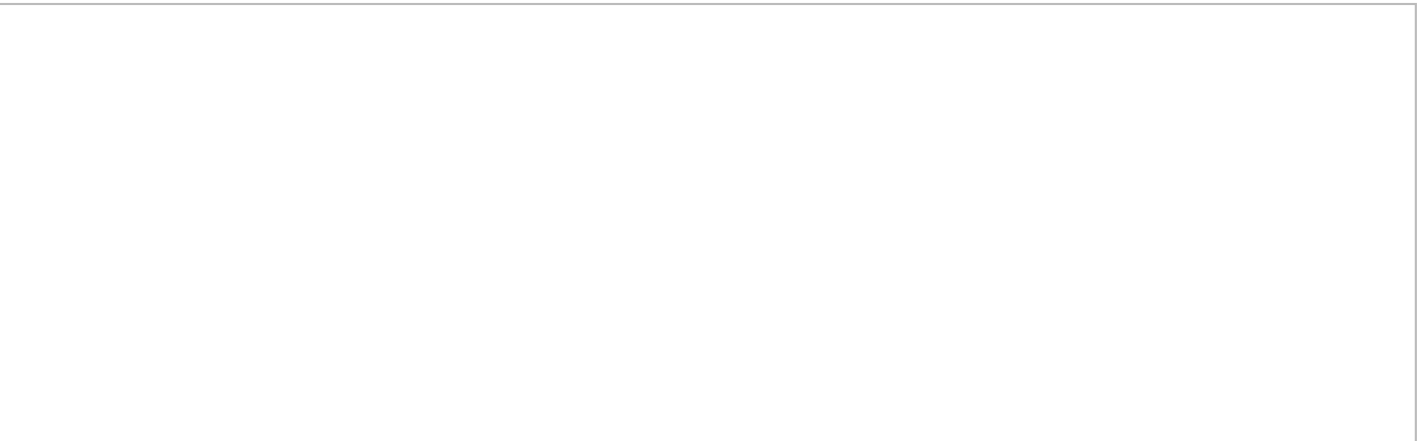
Fence notes	There is extensive damage to the fence throughout the enclosure. Whilst it is generally stable, it will continue to deteriorate over time.		
Fencing photos			
			
			
Lighting			
Does this enclosure have lighting	Yes		
Total number of lit courts per enclosure	2		
Lighting infrastructure type	Black powder coated low level - Steel poles		
Lighting infrastructure position	Side		
Light fittings	One per tower		
Lighting infrastructure design	Standard		
Lighting infrastructure rating	Moderate		
	Issues/Observations:		
Lighting life span	6-10 years		
Lighting notes	The lighting is subject to large pieces of paint which have peeled from the lighting boxes. On some lights, it appears some rust has begun to collect.		
Lighting photos			



Accessibility

Court enclosure accessibility	Formed paths Trip hazards identified: yes Ramped access provided: no
Path material(s)	Other material?
Main gate dimensions	Standard pedestrian gate 1000mm x 2100mm
Accessibility notes	Pavers lead from the clubhouse to the enclosure. There is a step to enter into the enclosure.

Accessibility photos





Maintenance, Risk management and recommendations

Court	Hang drag mats on fencing Repair lines
Drainage	
Infrastructure	Repair damaged fencing Trim vegetation away from fencing
Lighting	Conduct a lighting lux level test

Safety Issues

Are there any critical safety issues?	No
Enclosure recommendations	Repair court erosion on both courts before a significant trip hazard eventuates. Plan for upgrade to fencing.

Enclosure 2

Number of courts in enclosures	1
Court size	full
Are there any enclosed mini courts? If so, how many?	0
Surface type in enclosure	Red Porous
Court base in enclosure	Crushed rock / scoria
Overall base rating	Good

Courts

Condition


Unique court number	8
Surface condition rating	Moderate Issues/Observations: Aged surface Excessively worn surface in high wear areas
Surface type	Red Porous
Surface life span	10+ years
Court condition notes	The court has some signs of aggregate showing through the top dressing of the surface. There is some leaf litter across the court due to trees and bushes being in close proximity.

Court condition photos



Line marking

Line marking description	Tennis only lines
--------------------------	-------------------

Line marking rating	Moderate
	Issues/Observations: Inconsistent bounce likely
Line marking condition notes	The court lines are standard for a red porous court and are nailed into the surface. They are a little aged but otherwise do not appear to be cracked or broken.
Line marking condition photos	
	
Net posts	
Net post type	Round galvanised - Installed directly into pavement
Net post condition	Good
	Issues/Observations: Straight
Net post winders	Protruding winders
Net condition	Good
Net structure	Tethered to the posts : yes Centre strap fitted: yes
Net post life span	10+ years
Net life span	6-10 years
Net / post notes	
Net / post photos	
No photos taken	
Court compliance	
Is the court run off compliant?	no
	Runoffs North: 4800m South: 4700m East: 3100m West: 3100m

Could the court be made compliant?	no
Is the court to the standard dimensions?	yes
Court orientation	North-south
Are netball goal posts outside tennis court run off areas?	no
Are lockable post hole covers fitted and safe?	no
Compliance notes	The court is not run off compliant to the north or south behind the baselines. Light posts inside the enclosure are also within run off areas.

Compliance photos



Drainage

Drainage infrastructure	Formed
What type of drainage is in place?	Concrete spoon drains
Are drains, pits or other infrastructure provided within the court enclosure?	yes
Are drains, pits or other infrastructure provided within the run-off areas?	no
Drainage rating	Moderate
	Issues/Observations: Leaf litter build up
Drainage notes	A concrete spoon drain runs along the western and northern border, and appears to run off down the embankment into a garden bed and eventually into a drain located in the car park. There is extensive leaf litter in the spoon drain.

Drainage photos



Fencing

Fence type	Galvanised chain mesh
Fence Rails	Fence rail top: no Fence rail bottom: yes
Fence height	3m to 3.5m Low level side fencing installed: yes
Fence attachments	There are no fence attachments.
Fence condition rating	Poor Issues/Observations: Slack mesh Rusted mesh Damaged mesh Excessive gap under fencing - allows balls to escape enclosure Trees overhanging enclosure Trees/shrubs growing through mesh
Fencing life span	6-10 years
Fence notes	There is extensive damage to the fence throughout the enclosure. Whilst it is generally stable, it will continue to deteriorate over time.
Fencing photos	



Lighting

Does this enclosure have lighting	Yes
Total number of lit courts per enclosure	1
Lighting infrastructure type	High tower - Steel poles
Lighting infrastructure position	Corner
Light fittings	One per tower
Lighting infrastructure design	Standard
Lighting infrastructure rating	Moderate
	Issues/Observations: Old however in good condition - potential upgrade required
Lighting life span	6-10 years
Lighting notes	The lighting would likely not meet minimum lux standards for night tennis, although the infrastructure is otherwise in good condition.
Lighting photos	



Accessibility

Court enclosure accessibility	Formed paths Trip hazards identified: yes Ramped access provided: no
Path material(s)	Concrete
Main gate dimensions	Standard pedestrian gate 1000mm x 2100mm
Accessibility notes	Users are required to step over pavers to enter the enclosure.

Accessibility photos



Maintenance, Risk management and recommendations

Court	Trim trees/shrubs away from court enclosure and fencing Hang drag mats on fencing
Drainage	Remove build-up of debris from drainage infrastructure to allow efficient water movement.
Infrastructure	Repair damaged fencing Trim vegetation away from fencing
Lighting	Conduct a lighting lux level test

Safety Issues

Are there any critical safety issues?	No
Enclosure recommendations	Plan for the upgrade of the court surface in the long term. Plan for replacement of fencing.

Enclosure 3

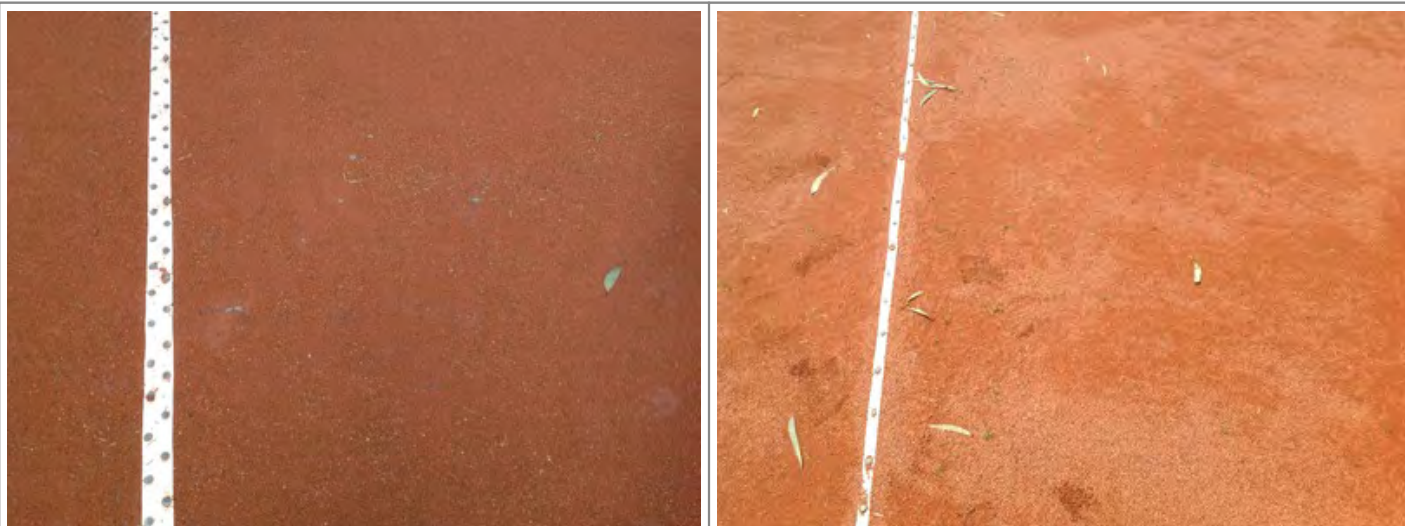
Number of courts in enclosures	1
Court size	full
Are there any enclosed mini courts? If so, how many?	0
Surface type in enclosure	Red Porous
Court base in enclosure	Crushed rock / scoria
Overall base rating	Good

Courts

Condition

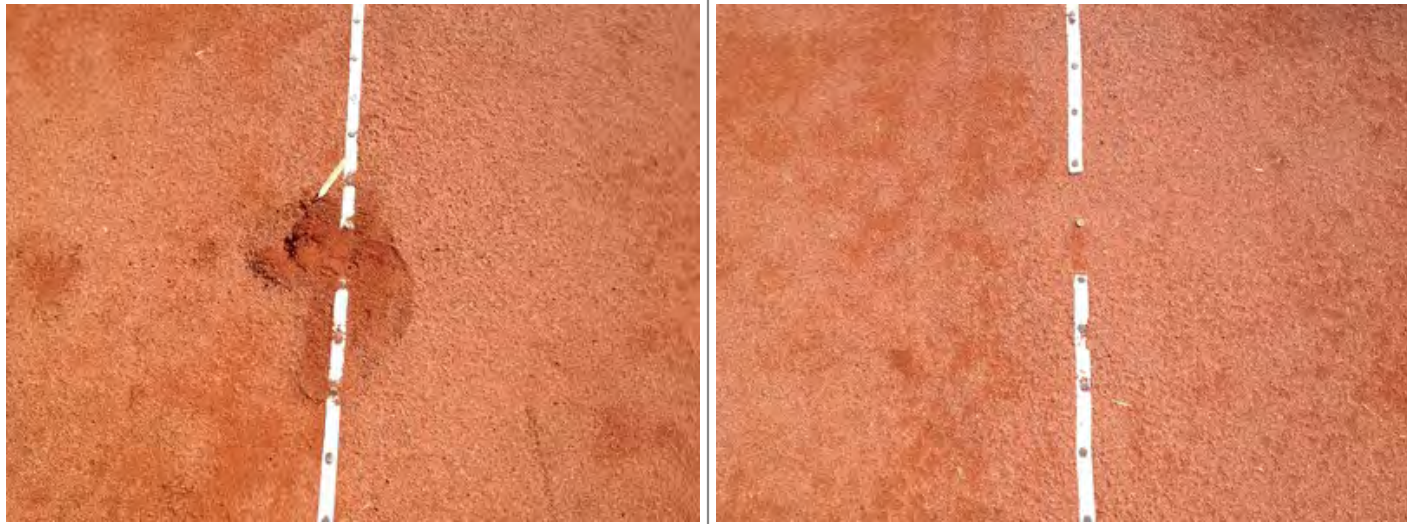
Unique court number	7
Surface condition rating	Moderate Issues/Observations: Weed growth Aged surface Excessively worn surface in high wear areas
Surface type	Red Porous
Surface life span	10+ years
Court condition notes	The court has some signs of aggregate showing through the top dressing of the surface. There is some leaf litter across the court due to trees and bushes being in close proximity.

Court condition photos



Line marking

Line marking description	Tennis only lines
--------------------------	-------------------

Line marking rating	Moderate
	Issues/Observations: Cracked Inconsistent bounce likely
Line marking condition notes	The court lines are standard for a red porous court and are nailed into the surface. They are a little aged but otherwise do not appear to be cracked or broken, except along the service line of the southern end.
Line marking condition photos	
	
Net posts	
Net post type	Round galvanised - Installed directly into pavement
Net post condition	Good
	Issues/Observations: Straight
Net post winders	Protruding winders
Net condition	Good
Net structure	Tethered to the posts : yes Centre strap fitted: yes
Net post life span	10+ years
Net life span	6-10 years
Net / post notes	
Net / post photos	
No photos taken	
Court compliance	
Is the court run off compliant?	no
	Runoffs North: 4800m South: 4600m East: 3400m West: 3100m

Could the court be made compliant?	no
Is the court to the standard dimensions?	yes
Court orientation	North-south
Are netball goal posts outside tennis court run off areas?	no
Are lockable post hole covers fitted and safe?	no
Compliance notes	The court is not run off compliant to the north or south behind the baselines. Light posts inside the enclosure are also within run off areas.

Compliance photos

No photos taken

Drainage

Drainage infrastructure	Formed
What type of drainage is in place?	Concrete spoon drains
Are drains, pits or other infrastructure provided within the court enclosure?	no
Are drains, pits or other infrastructure provided within the run-off areas?	no
Drainage rating	Good
	Issues/Observations:
Drainage notes	A concrete spoon drain runs along the western border, into the north western corner to a small pit drain. Additionally, the court falls away down a grassed slope on the eastern side and there is evidence that water flows off this way too.

Drainage photos



Fencing

Fence type	Galvanised chain mesh
Fence Rails	Fence rail top: no Fence rail bottom: yes
Fence height	3m to 3.5m Low level side fencing installed: yes
Fence attachments	There are no fence attachments.
Fence condition rating	Poor Issues/Observations: Slack mesh Rusted mesh Damaged mesh Excessive gap under fencing - allows balls to escape enclosure Trees overhanging enclosure Trees/shrubs growing through mesh
Fencing life span	6-10 years
Fence notes	There is extensive damage to the fence throughout the enclosure. Whilst it is generally stable, it will continue to deteriorate over time.

Fencing photos



Lighting

Does this enclosure have lighting	Yes
Total number of lit courts per enclosure	1
Lighting infrastructure type	High tower - Steel poles
Lighting infrastructure position	Corner
Light fittings	One per tower
Lighting infrastructure design	Standard
Lighting infrastructure rating	Moderate Issues/Observations: Old however in good condition - potential upgrade required

Lighting life span	6-10 years
Lighting notes	This lighting design should be tested to discover if it is appropriate for night tennis, although it is in otherwise good condition.
Lighting photos	



Accessibility

Court enclosure accessibility	Formed paths Trip hazards identified: yes Ramped access provided: no
Path material(s)	Other material?
Main gate dimensions	Standard pedestrian gate 1000mm x 2100mm
Accessibility notes	Pavers lead from the clubhouse to the enclosure. There is a step to enter into the enclosure, and also a series of steps down to the enclosure from the path between the upper enclosures.

Accessibility photos



Maintenance, Risk management and recommendations

Court	Remove weed growth from court enclosure Trim trees/shrubs away from court enclosure and fencing Hang drag mats on fencing
--------------	---

	Repair lines
Drainage	
Infrastructure	Repair damaged fencing Trim vegetation away from fencing
Lighting	Conduct a lighting lux level test
Safety Issues	
Are there any critical safety issues?	No
Enclosure recommendations	Plan for upgrade to court base to rectify the compacted surface. Plan for upgrade to fencing.

Enclosure 4

Number of courts in enclosures	3
Court size	full
Are there any enclosed mini courts? If so, how many?	0
Surface type in enclosure	Synthetic Clay
Court base in enclosure	Crushed rock / scoria
Overall base rating	Good

Courts

Condition


Unique court number	4
Surface condition rating	Good
	Issues/Observations:
Surface type	Synthetic Clay
Surface life span	6-10 years
Court condition notes	This court appears to be in very good condition. There are no obvious signs of seam stress and there is an even cover of sand across the surface.

Court condition photos



Line marking

Line marking description	Tennis only lines
Line marking rating	Good
	Issues/Observations: Clear and bright Straight and clean

Line marking condition notes	The lines are in the same condition as the rest of the court.
Line marking condition photos	
	
Net posts	
Net post type	Square black powder coated - Installed into sleeves
Net post condition	Good Issues/Observations: Straight
Net post winders	Collapsible winders
Net condition	Good
Net structure	Tethered to the posts : yes Centre strap fitted: yes
Net post life span	10+ years
Net life span	6-10 years
Net / post notes	
Net / post photos	
No photos taken	
Court compliance	
Is the court run off compliant?	no Runoffs North: 4700m South: 4700m East: 3600m West: 3500m
Could the court be made compliant?	no
Is the court to the standard dimensions?	yes
Court orientation	North-south

Are netball goal posts outside tennis court run off areas?	no
Are lockable post hole covers fitted and safe?	no
Compliance notes	The court is not run off compliant to the north or south behind the baselines.
Compliance photos	



Courts


Condition

Unique court number	5
Surface condition rating	Good
	Issues/Observations:
Surface type	Synthetic Clay
Surface life span	6-10 years
Court condition notes	This court appears to be in very good condition. There are no obvious signs of seam stress and there is an even cover of sand across the surface.

Court condition photos



Line marking

Line marking description	Tennis only lines
Line marking rating	Good Issues/Observations: Clear and bright Straight and clean
Line marking condition notes	The lines are in the same condition as the rest of the court.
Line marking condition photos	
	
Net posts	
Net post type	Square black powder coated - Installed into sleeves
Net post condition	Good Issues/Observations: Straight
Net post winders	Collapsible winders
Net condition	Good
Net structure	Tethered to the posts : yes Centre strap fitted: yes
Net post life span	10+ years
Net life span	6-10 years
Net / post notes	
Net / post photos	
No photos taken	
Court compliance	
Is the court run off compliant?	no Runoffs North: 4700m South: 4700m East: 3700m West: 3600m

Could the court be made compliant?	no
Is the court to the standard dimensions?	yes
Court orientation	North-south
Are netball goal posts outside tennis court run off areas?	no
Are lockable post hole covers fitted and safe?	no
Compliance notes	The court is not run off compliant to the north or south behind the baselines.
Compliance photos	



Courts

Condition

Unique court number	6
Surface condition rating	Good
	Issues/Observations:
Surface type	Synthetic Clay
Surface life span	6-10 years
Court condition notes	This court appears to be in very good condition. There are no obvious signs of seam stress and there is an even cover of sand across the surface.

Court condition photos



Line marking


Line marking description	Tennis only lines
Line marking rating	Good Issues/Observations: Clear and bright Straight and clean
Line marking condition notes	The lines are in the same condition as the rest of the court.

Line marking condition photos



Net posts

Net post type	Square black powder coated - Installed into sleeves
Net post condition	Good Issues/Observations: Straight
Net post winders	Collapsible winders
Net condition	Good
Net structure	Tethered to the posts : yes Centre strap fitted: yes

Net post life span	10+ years
Net life span	6-10 years
Net / post notes	
Net / post photos	
No photos taken	
Court compliance	
Is the court run off compliant?	no Runoffs North: 4700m South: 4700m East: 3900m West: 3700m
Could the court be made compliant?	no
Is the court to the standard dimensions?	yes
Court orientation	North-south
Are netball goal posts outside tennis court run off areas?	no
Are lockable post hole covers fitted and safe?	no
Compliance notes	The court is not run off compliant to the north or south behind the baselines.
Compliance photos	
	
Drainage	
Drainage infrastructure	Unformed
What type of drainage is in place?	No drainage infrastructure
Are drains, pits or other infrastructure provided within the court enclosure?	yes

Are drains, pits or other infrastructure provided within the run-off areas?	yes
Drainage rating	Good
	Issues/Observations: Ponding evident
Drainage notes	There is no apparent drainage infrastructure for these courts. Instead, they appear to drain straight through the surface. There are some signs of pooling of water along the southern and northern fence lines.

Drainage photos



Fencing

Fence type	Galvanised chain mesh
Fence Rails	Fence rail top: no Fence rail bottom: yes
Fence height	3m to 3.5m Low level side fencing installed: no
Fence attachments	Sightscreens Windbreaks
Fence condition rating	Poor
	Issues/Observations: Slack mesh Rusted mesh Damaged mesh Excessive gap under fencing - allows balls to escape enclosure Trees overhanging enclosure Trees/shrubs growing through mesh
Fencing life span	6-10 years
Fence notes	There is extensive damage to the fence throughout the enclosure. Whilst it is generally stable, it will continue to deteriorate over time.

Fencing photos



Lighting

Does this enclosure have lighting	Yes
Total number of lit courts per enclosure	3
Lighting infrastructure type	Black powder coated low level - Steel poles
Lighting infrastructure position	Side
Light fittings	One per tower
Lighting infrastructure design	Standard
Lighting infrastructure rating	Good
	Issues/Observations: Infrastructure and fittings in very good condition - likely to achieve required lux standards
Lighting life span	6-10 years
Lighting notes	The lighting all appears in good condition. They do, however, have a non-standard capping around the light fitting. This capping in the light between courts four and five and five and six at the northern end rattles and makes a noise when subject to wind. It is unknown if it requires attention or not.

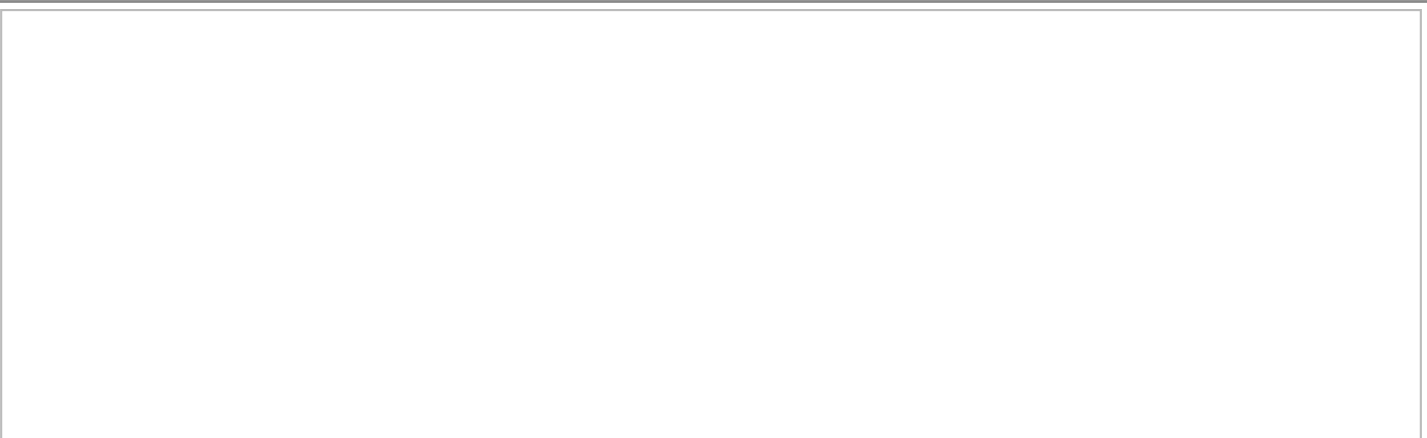
Lighting photos



Accessibility

Court enclosure accessibility	Formed paths Trip hazards identified: yes Ramped access provided: no
Path material(s)	Other material?
Main gate dimensions	Standard pedestrian gate 1000mm x 2100mm
Accessibility notes	Pavers lead from the clubhouse to the enclosure.

Accessibility photos





Maintenance, Risk management and recommendations

Court	Trim trees/shrubs away from court enclosure and fencing Hang drag mats on fencing
Drainage	
Infrastructure	Repair damaged fencing Trim vegetation away from fencing
Lighting	Conduct a lighting lux level test

Safety Issues

Are there any critical safety issues?	No
Enclosure recommendations	Investigate the rattling lights at the northern end between courts four and five and five and six. Plan for upgrade to fencing.

Enclosure 5

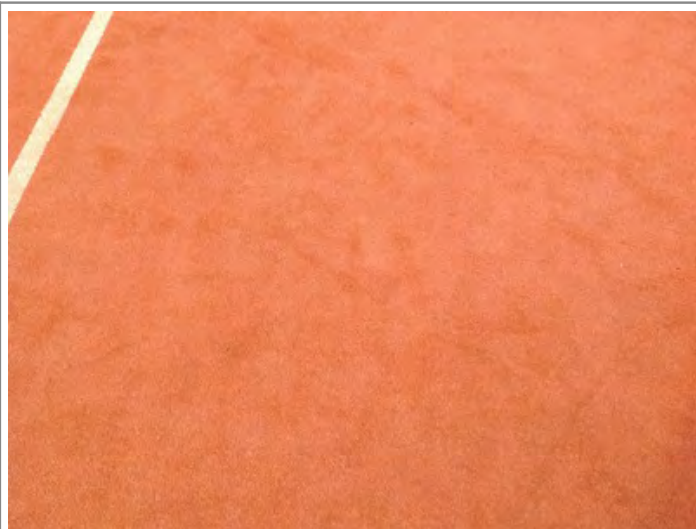
Number of courts in enclosures	1
Court size	full
Are there any enclosed mini courts? If so, how many?	0
Surface type in enclosure	Synthetic Clay
Court base in enclosure	Crushed rock / scoria
Overall base rating	Good

Courts

Condition

Unique court number	3
Surface condition rating	Very Good
	Issues/Observations:
Surface type	Synthetic Clay
Surface life span	6-10 years
Court condition notes	This court appears to be in very good condition. There are no obvious signs of seam stress and there is an even cover of sand across the surface. The court appears to be newest at the facility.

Court condition photos



Line marking

Line marking description	Tennis only lines
Line marking rating	Good
	Issues/Observations: Clear and bright Straight and clean

Line marking condition notes	The lines are in the same condition as the rest of the court.
Line marking condition photos	
	
Net posts	
Net post type	Square black powder coated - Installed into sleeves
Net post condition	Good Issues/Observations: Straight
Net post winders	Collapsible winders
Net condition	Good
Net structure	Tethered to the posts : yes Centre strap fitted: yes
Net post life span	10+ years
Net life span	6-10 years
Net / post notes	
Net / post photos	
No photos taken	
Court compliance	
Is the court run off compliant?	no Runoffs North: 4900m South: 4900m East: 2900m West: 2900m
Could the court be made compliant?	no
Is the court to the standard dimensions?	yes
Court orientation	North-south

Are netball goal posts outside tennis court run off areas?	no
Are lockable post hole covers fitted and safe?	no
Compliance notes	The court does not run off compliance to any direction.
Compliance photos	
No photos taken	

Drainage

Drainage infrastructure	Formed
What type of drainage is in place?	Grated pit(s)
Are drains, pits or other infrastructure provided within the court enclosure?	yes
Are drains, pits or other infrastructure provided within the run-off areas?	yes
Drainage rating	Good
	Issues/Observations: Ponding evident
Drainage notes	There is a grated pit in the south eastern corner has been covered by the synthetic clay surface. There are some signs of pooling of water along the southern and northern fence lines.

Drainage photos



Fencing

Fence type	Galvanised chain mesh
Fence Rails	Fence rail top: no Fence rail bottom: yes
Fence height	3m to 3.5m Low level side fencing installed: no

Fence attachments	There are no fence attachments.
Fence condition rating	Poor Issues/Observations: Slack mesh Rusted mesh Damaged mesh Excessive gap under fencing - allows balls to escape enclosure Trees overhanging enclosure Trees/shrubs growing through mesh
Fencing life span	6-10 years
Fence notes	There is extensive damage to the fence throughout the enclosure. Whilst it is generally stable, it will continue to deteriorate over time.

Fencing photos



Lighting

Does this enclosure have lighting	Yes
Total number of lit courts per enclosure	1
Lighting infrastructure type	Black powder coated low level - Steel poles
Lighting infrastructure position	Side
Light fittings	One per tower
Lighting infrastructure design	Standard
Lighting infrastructure rating	Very Good Issues/Observations: Infrastructure and fittings in very good condition - likely to achieve required lux standards
Lighting life span	6-10 years
Lighting notes	The lighting appears very new, and does not have the non-standard fittings evident in enclosure four.

Lighting photos



Accessibility

Court enclosure accessibility	Formed paths Trip hazards identified: yes Ramped access provided: no
Path material(s)	Other material?
Main gate dimensions	Standard pedestrian gate 1000mm x 2100mm
Accessibility notes	Pavers lead from the clubhouse to the enclosure.

Accessibility photos



Maintenance, Risk management and recommendations

Court	Trim trees/shrubs away from court enclosure and fencing Hang drag mats on fencing
Drainage	
Infrastructure	Repair damaged fencing Trim vegetation away from fencing
Lighting	Conduct a lighting lux level test

Safety Issues

Are there any critical safety issues?	No
Enclosure recommendations	Plan for upgrade to fencing.

Building and surrounds

Condition of ground and court surrounds	Good
Court surround notes	Court surrounds are extensive and offer numerous sitting and spectator areas. A bbq area is also covered, and plenty of shade is afforded to spectators.
Water supply	Unknown
Water notes	
Natural Shade	Sufficient shade available within viewing range
Man made Shade	Purpose built shelter
Shade notes	A clubhouse verandah also exists.
Car parking	On street: Off street: 41-60 spaces Overflow:
Does the site have any hit up walls	no
Car park notes	
Adjacent facilities	Oval/playing field Community centre
Does the site have any potential expansion opportunities?	no

Grounds and surrounds photos



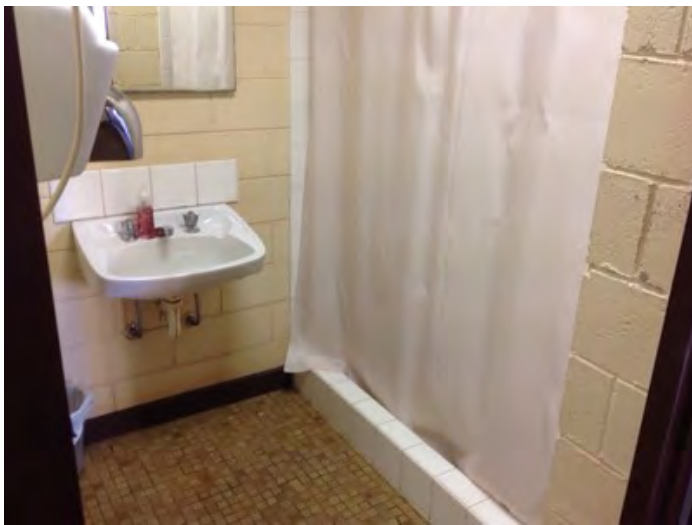
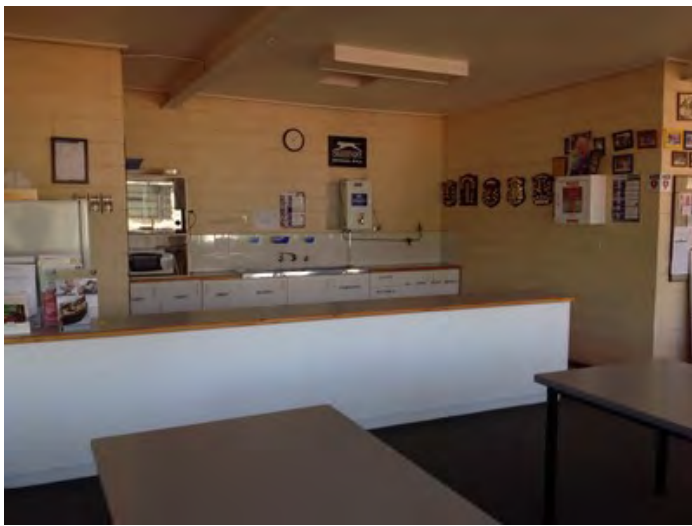


Clubroom

Building Condition	Good
Estimated building age	30+ years
Building materials	Brick
Accessible entry to building	no
Kitchen	Standard
Bar	no
Player change rooms	Male: 0 Female: 0 Unisex: 0
Social area	69 m2
Social area comments	
Toilets	Male: Female: Accessible:
Clubroom condition notes	The clubhouse consists of an open social area with a large kitchen. There are large windows which look out on to court three. There is some damage to the brick work on the interior of the clubhouse. Plastic chairs are stacked for use at a row of tables.
Other amenities provided within or outside clubrooms	Equipment storage BBQ /outdoor seating area
Other amenities condition notes	
Are there any safety concerns within clubrooms?	no

Clubroom condition photos





Classification	-
Overall Facility recommendation(s)	Plan for fencing upgrades throughout the venue. Plan for resurfacing of red porous courts, particularly in enclosure two and three. Investigate and rectify the erosion occurring due to water run off on the red porous courts. Investigate the retaining wall on the western boundary of enclosure two. Investigate the noise emanating from the lights in enclosure four.

Site Map

